

UNIVERSITY OF WUPPERTAL  
BERGISCHE UNIVERSITÄT WUPPERTAL

EUROPÄISCHE WIRTSCHAFT UND  
INTERNATIONALE MAKROÖKONOMIK



Alina Wilke / Paul J. J. Welfens

**Urban Wind Energy Production in European Cities:  
New Opportunities**

EIIW Diskussionsbeitrag 287  
EIIW Discussion Paper 287



*Europäische Wirtschaft und Internationale Wirtschaftsbeziehungen  
European Economy and International Economic Relations*

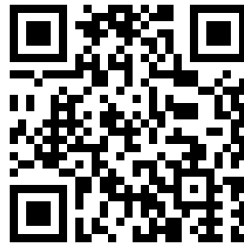
ISSN 1430-5445

EIIW Discussion Papers are registered with RePEc-Econ Papers and in ECONIS

Alina Wilke / Paul J. J. Welfens

**Urban Wind Energy Production in European Cities: New Opportunities**

December 21<sup>st</sup> 2020



*Herausgeber/Editor: Prof. Dr. Paul J.J. Welfens, Jean Monnet Chair in European Economic Integration*

EUROPÄISCHES INSTITUT FÜR INTERNATIONALE WIRTSCHAFTSBEZIEHUNGEN (EIIW)/  
EUROPEAN INSTITUTE FOR INTERNATIONAL ECONOMIC RELATIONS  
Bergische Universität Wuppertal, Campus Freudenberg, Rainer-Gruenter-Straße 21,  
D-42119 Wuppertal, Germany  
Tel.: (0)202 – 439 13 71  
Fax: (0)202 – 439 13 77  
E-mail: [welfens@eiiw.uni-wuppertal.de](mailto:welfens@eiiw.uni-wuppertal.de)  
[www.eiiw.eu](http://www.eiiw.eu)

**JEL classification:** Q42, Q48, Q50, R11

**Key words:** urban wind farming, MERRA2, wind energy potential, climate policy, regulation

## **Summary:**

Climate policy challenges reinforce the search for additional elements of renewable energy generation. Small-scale wind energy provides new opportunities for decentralized electricity production, while avoiding grid-dependence and transmission losses. This paper presents a potential analysis for urban wind energy production for two European cities. The simulation follows the framework presented by Rezaeiha et al. (2020) and extends it by using the reanalysis wind grid dataset MERRA2 by NASA (GES DISC, 2020). The dataset combines reliable and complete weather observations in a standardized manner on a global scale, mitigating observation gaps of meteorological stations. This allows us to provide a preliminary potential analysis, while avoiding inaccuracies based on long-distance interpolation. The analyzed cities show considerable urban wind energy farming potential. For the city of Lisbon, Portugal, the installation of only four VAWT on 264 buildings between 20-115 m throughout the city provides an annual wind energy production potential (AEPP) of 9,203 MWh, which approximately corresponds to the annual electricity consumption of 7,167 residents. In Hamburg, Germany, the AEPP amounts to 16,927 MWh produced by 2,840 turbines (four turbines on 710 buildings), which approximately corresponds to the annual electricity consumption of 10,932 residents. The AEPP can easily be increased by using more efficient HAWT, whereby technological advancements in recent years have made them applicable even in the urban environment setting. Additionally, small wind turbines could be installed on buildings of a height lower than 20 m, especially when the overall built environment of the city is rather flat, such as in Lisbon.

## **Zusammenfassung:**

Klimapolitische Herausforderungen verstärken die Suche nach zusätzlichen Elementen für die erneuerbare Energieerzeugung. Die Windenergieerzeugung in kleinem Maßstab bietet neue Möglichkeiten zur dezentralen Stromerzeugung, während gleichzeitig Netzabhängigkeit und Übertragungsverluste vermieden werden. In diesem Beitrag wird eine Potenzialanalyse für die urbane Windenergieerzeugung für zwei europäische Städte vorgestellt. Die Simulation folgt dem von Rezaeiha et al. (2020) vorgestellten Analysegerüst, erweitert ihn aber durch die Verwendung des Reanalyse-Windraster-Datensatzes MERRA2 der NASA (GES DISC, 2020). Dieser kombiniert zuverlässige und vollständige Wetterbeobachtungen in einer standardisierten Weise auf globaler Ebene und verringert dadurch Beobachtungslücken von meteorologischen Stationen. Dies ermöglicht eine erste Potenzialanalyse, wobei Ungenauigkeiten aufgrund von Interpolationen über große Entfernungen vermieden werden können. Die analysierten Städte zeigen ein beträchtliches Potenzial für die urbane Windenergienutzung. Für die Stadt Lissabon, Portugal, ergibt sich durch die Installation von nur vier VAWT auf 264 Gebäuden zwischen 20-115 m im gesamten Stadtgebiet ein jährliches Windenergie-Erzeugungspotenzial von 9.203 MWh, was in etwa dem jährlichen Stromverbrauch von 7.167 Einwohnern entspricht. In Hamburg beträgt das jährliche Windenergie-Erzeugungspotenzial 16.927 MWh, produziert von 2.840 Turbinen (vier Turbinen auf 710 Gebäuden), was ungefähr dem jährlichen Stromverbrauch von 10.932 Einwohnern entspricht. Das jährliche Windenergie-Erzeugungspotenzial kann leicht erhöht werden, indem effizientere HAWT eingesetzt werden, wobei die technologischen Fortschritte der letzten Jahre sie auch im städtischen Umfeld einsetzbar gemacht haben. Zusätzlich könnten kleine Windturbinen auf Gebäuden mit einer Höhe von weniger als 20 m installiert werden, insbesondere wenn die gesamte bebaute Umgebung der Stadt eher flach ist, wie in Lissabon.

**Acknowledgments:** We gratefully acknowledge editorial support by David Hanrahan and discussions with Tobias Zander, EIIW. The usual disclaimer applies.

*Alina Wilke, M.A., Research Associate at Schumpeter School of Business and Economics and European Institute of International Economic Relations (EIIW), University of Wuppertal, Germany; corresponding author.*

[wilke@eiiw.uni-wuppertal.de](mailto:wilke@eiiw.uni-wuppertal.de)

*Prof. Dr. Paul J.J. Welfens, Jean Monnet Professor for European Economic Integration; Chair for Macroeconomics; President of the European Institute for International Economic Relations at the University of Wuppertal, (EIIW), Rainer-Gruenter-Str. 21, D-42119 Wuppertal; +49 202 4391371), Alfred Grosser Professorship 2007/08, Sciences Po, Paris; Research Fellow, IZA, Bonn; Non-Resident Senior Fellow at AICGS/Johns Hopkins University, Washington DC.*

*Prof. Welfens has testified before the US Senate, the German Parliament, the BNetzA, the European Parliament, the European Central Bank, the IMF, the Interaction Council and the UN. Managing co-editor of International Economics and Economic Policy.*

[welfens@eiiw.uni-wuppertal.de](mailto:welfens@eiiw.uni-wuppertal.de),

[www.eiiw.eu](http://www.eiiw.eu)

*EIIW 2020 = 25 years of award-winning research*

## **Urban Wind Energy Production in European Cities: New Opportunities**

EIIW Diskussionsbeitrag 287

EIIW Discussion Paper 287

# Table of Contents

List of Figures .....	VII
List of Tables.....	VII
1. Introduction .....	1
2. Literature Review .....	3
3. Methodology .....	5
3.1 Buildings .....	6
3.2 Wind .....	7
3.2.1 Vertical extrapolation of wind speed.....	8
3.2.2 Creation of wind groups and assignment of buildings .....	9
3.3 Turbine .....	10
3.4 Wind energy potential .....	12
4. Empirical analysis .....	14
4.1 Building data .....	15
4.2 Wind data .....	18
4.3 Turbine Data.....	21
4.4 Wind energy potential in each domain.....	23
5. Discussion .....	28
6. Concluding remarks and policy perspectives .....	29
Bibliography.....	32
Appendix: Aeolos-V 3kW Vertical Wind Turbine Brochure .....	37

## List of Figures

Figure 1: Mean wind speed at 110m from MERRA reanalysis, 1979-2013.....	3
Figure 2: A graphical representation of the framework/methodology .....	6
Figure 3: Vertical Axis Wind Turbines (VAWT): A - helical VAWT B - H-Darrieus rotor VAWT .....	11
Figure 4: Vertical Axis Wind Turbines (VAWT): A - helical VAWT B - H-Darrieus rotor VAWT .....	12
Figure 5: Hourly wind speeds in 2019 for the three MERRA2-coordinates comprising Lisbon. ....	14
Figure 6: Hourly wind speeds in 2019 for the two MERRA2-coordinates comprising Hamburg. ....	15
Figure 7: Relevant MERRA2 coordinates for the sample domains .....	17
Figure 8: Undisturbed average wind speeds at reference heights .....	19
Figure 9: Weibull distributions for wind groups .....	21
Figure 10: Power curve of the sample turbine Aeolos-V-3kW .....	23
Figure 11: Lisbon - Annual number of hours for each wind speed bin and wind group. Each wind group having unique A and k. ....	26
Figure 12: Hamburg - Annual number of hours for each wind speed bin and wind group. Each wind group having unique A and k .....	26

## List of Tables

Table 1: Definition of building types used in the analysis. ....	16
Table 2: Number of buildings per building type in each city .....	16
Table 3: Height groups, reference heights and respective number of buildings per city .....	17
Table 4: Wind Groups Lisbon, with Weibull parameters and affiliated buildings. ....	20
Table 5: Technical data of the sample turbine Aeolos-V-3kW .....	22
Table 6: Minimum and maximum wind speeds in the sample domains .....	22
Table 7: AEPP (kWh) of a single turbine at different wind speed bins, for each wind group - Lisbon.....	24
Table 8: AEPP (kWh) of a single turbine at different wind speed bins, for each wind group - Hamburg.....	25
Table 9: Total AEPP in Lisbon generated by four turbines on 264 buildings .....	27
Table 10: Total AEPP in Hamburg generated by four turbines on 710 buildings .....	27

# 1. Introduction

The expansion of renewable energy in G20 countries and beyond is crucial for achieving the ambitious goal of the Paris Agreement to mitigate the global average temperature increase to below 2°C above pre-industrial levels (United Nations, 2015). The European Union (EU) recommitted itself to the Agreement by passing the European Green Deal, aiming to become the first climate-neutral continent by 2050 (European Commission, 2019). In response to the economic recession due to the Covid-19 pandemic, the European Commission proposed an economic recovery program that reinforces the Just Transition Fund up to €40 billion (European Commission, 2020a), supporting environmentally-friendly investments. EU member states could use this opportunity to strengthen the economy with new perspectives for renewable energy production.

A key driver of achieving climate-neutrality in the upcoming decades, is the replacement of CO<sub>2</sub>-emission intensive technologies with clean alternatives, especially in the generation of electricity from renewable sources. The expansion of renewable energy will depend on political goals set through national and international climate policy. However, relative CO<sub>2</sub> emission prices and (endogenous) technological progress will also play a role, as well as shifts in private preferences in favor of a more sustainable lifestyle.

In 2019, approximately one third of the globally-generated electricity came from renewable energy sources (IRENA, 2019). Half of renewably generated electricity was produced by hydropower plants, while wind and solar energy accounted for most of the remainder (IRENA, 2019). In the EU, 40 % of the consumed electricity came from renewable sources, of which 13% was produced by hydropower plants, 11% by wind turbines, 5% by biofuels and 4% by solar power (Eurostat, 2020b). Despite global renewable energy production growing annually by 5.8% on average over the last decade (IRENA, 2020a), the current increase in renewable energy production is not sufficient to achieve climate-neutrality by 2050 (Welfens, 2019).

As regards climate neutrality challenges, it is clear that the relative cost development dynamics of renewable energy – compared to fossil fuels – will be a decisive element for the composition of new energy investment. According to IRENA (IRENA, 2020b), for 2019, 72% of new capacity installments worldwide represented renewables; in the period 2010-2019 the worldwide weighted-average levelized cost of electricity (LCOE) of solar photovoltaics (PV) reduced by 82% whereas that of concentrating solar power (CSP) reduced by 47%; onshore wind and offshore wind by 39% and 29%, respectively. Note that LCOE refers to a life cycle discounted cost concept. Solar PV electricity costs reduced by 13% in 2019 compared to the year before and reached \$0.068 per kWh. Looking at the new energy projects commissioned in 2019, the worldwide weighted-average LCOE of offshore and onshore wind energy both reduced by about 9% in a year-on-year perspective and stood at \$0.053/kWh for onshore wind energy and \$0.115/kWh for offshore wind energy. The costs for CSP reduced by 1% to \$0.182/kWh. As regards new geothermal power projects, the costs are about \$0.073/kWh while the weighted-average global costs for hydropower faced an increase from \$0.037/kWh in 2010 to \$0.047/kWh in 2019. These general international tendencies suggest that renewable energy options will have improving medium perspectives with respect to investment worldwide. There is, however, a special topic that has been little researched, although the economic and climate relevance could be considerable, namely urban wind farming which could be a new crucial



niche activity in hundreds of cities worldwide – here, an exemplary focus is placed on Lisbon and Hamburg for which simulations are offered for the first time.

In a general perspective, the International Energy Agency (IEA) has been rather optimistic that the rise of the share of renewable energy will go on in the medium term in the world economy and that the long run offshore wind potential will be about 18 times the world demand of 2018 (IEA, 2019). Effectively, the installed wind energy capacity has been increasing annually by 17.8% on average between 2010 and 2018, (IRENA, 2020a). However, the actual global wind energy generation in 2018 was only 0.3% of global annual demand in 2018. RUIZ ET AL. (2019) find that without changing the current legal requirements for the installation of large wind turbines, the wind potential in the EU is equivalent to three times its current annual electricity demand. This production potential involves the installation of 8,400 TWh worth of onshore wind turbines and 1,300 TWh worth of offshore wind turbines (Ruiz et al., 2019).

While the expansion of solar energy and off-shore wind energy have been strong pillars of renewable energy in many countries, the expansion of land-based wind energy generation, including the particular form of urban wind farming has not been much considered by policy makers. Although there were early initiatives to consider the role of urban wind electricity generation – including the EU-financed research project WINEUR (Wind Energy Integration in the Urban Environment (Cace et al., 2007) in which researchers from several EU countries looked into prospects for urban wind turbines. We consider it to be a rather neglected form of renewable electricity. On-site energy production, such as urban wind farming, bypasses the problem of grid extension and transmission losses. The negative impacts of power blackouts due to instable grids, such as frequently occur in the Gaza region (Elnaggar et al., 2017), could be weakened or even avoided.

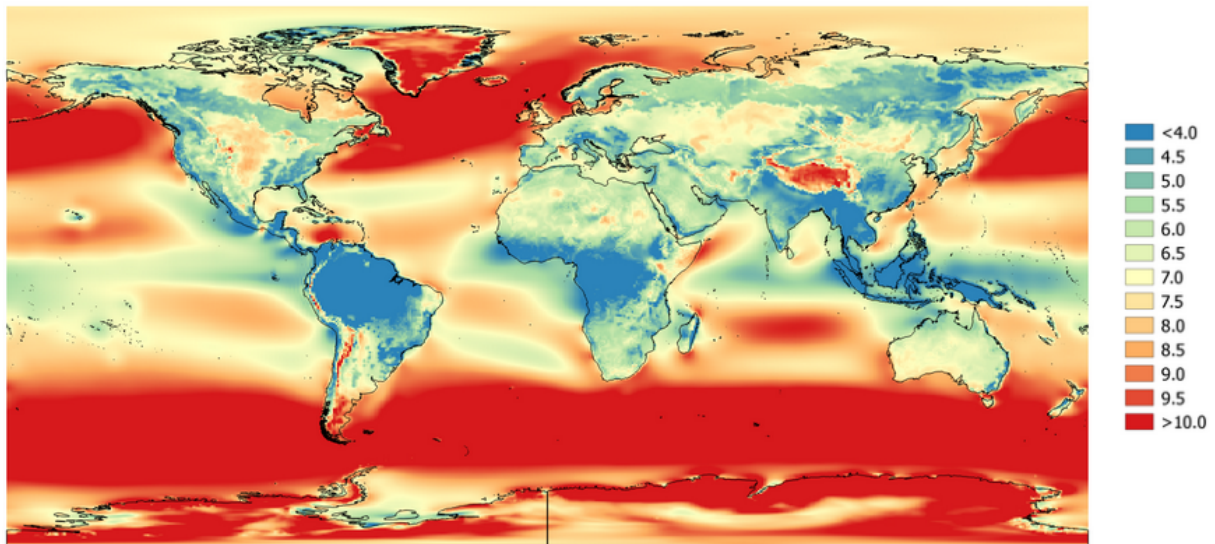
Small Wind Turbines (SWTs) are especially interesting for cities with only limited potential for solar energy generation, due to long winters and few hours of sunshine throughout the year. If combined with solar panels they can achieve optimal results throughout the whole year. Elnaggar et al. (2017) perform a feasibility study for roof-mounted SWTs in the Gaza region and find great potential for wind exploitation in the densely built region, especially when the turbines are combined with solar panels. Roof-mounted small wind turbines can then compensate for the weakness of photovoltaic energy in winter months (Elnaggar et al., 2017).

In particular, coastal cities might especially profit from the installation of SWTs. High wind velocities combined with the possibility of installing turbines on already existing high buildings might hold tremendous potential for electricity generation. The global wind potential has been assessed by NASA as part of the global dataset MERRA<sup>1</sup>. Global wind speeds from MERRA have been visualized by the Global Wind Atlas and are displayed in Figure 1 (Global Wind Atlas, 2018) . As expected, onshore wind currents are particularly high in coastal regions.

---

<sup>1</sup> The MERRA dataset has recently been updated and has been replaced with MERRA2 (NASA .

**Figure 1: Mean wind speed at 110m from MERRA reanalysis, 1979-2013.**



Source: Global Wind Atlas, 2018 (based on NASA)

The following analysis gives at first a brief literature review before we consider simulation analyses for Lisbon and Hamburg which are two interesting cases of port cities – with Lisbon representing high wind and solar energy potential, while Hamburg’s more northern geographic location makes it more exposed to wind energy than to solar energy sources. Section 3 considers the methodology for the simulation study while Section 4 presents the empirical analysis. Section 5 gives a discussion of key findings and Section 6 looks at the policy conclusions and perspectives for further research. At the bottom line there are three crucial findings: a) urban wind farming has an interesting potential which so far has not been exploited; b) it could be promoted by modified architectural guidelines and regulatory reforms; c) the technological progress potential in this nascent technology field seems to be considerable. The economic and ecological benefit arises not just in terms of additional renewable energy but also in avoided investment in grid network. A commercially viable case for urban wind farming may be assumed in most cities close to the seas as well in cities with other favorable geographical positions. Problems of construction standards and liability rules should, however, not be underestimated and need to get the attention of the European Commission in the EU.

## 2. Literature Review

Research on the potential of urban wind energy generation is still relatively scarce, but academic interest in the topic is growing constantly. The most studied topics are the turbulent, random nature of urban wind flows and, closely connected, the technical design of SWTs. The rough urban ground surface creates turbulences, overall unstable and unpredictable wind conditions. Site-specific characteristics, such as wind-shielding constructions or trees, as well as wake effects caused by the installation of multiple turbines must be considered thoroughly before a specific investment project in SWTs is undertaken (WINDEXchange, 2020).

However, for a large-scale assessment of the wind energy production potential in a region or city, tedious data collection is costly, time-consuming, and inconvenient. Existing studies

assess wind characteristics for rough ground surfaces through digital elevation models (Di Sabatino et al., 2008; Kent et al., 2019), computational fluid dynamic simulations (Simões and Estanqueiro, 2016; Toja-Silva et al., 2018) or LiDAR data (Bonczak and Kontokosta, 2019; von der Grün et al., 2020). Simões et al. (Simões et al.) develop a simplified approach to choose adequate locations for SWTs in cities which, however, still seems difficult to apply to a large scale preliminary assessment of urban wind production potential.

Regarding the assessment of wind speeds, some studies apply statistical modelling through Weibull distributions based on existing wind data of varying level of detail (Kassem et al., 2019; Rezaeiha et al., 2020). Some authors use historical observations from local meteorological stations (Rodriguez-Hernandez et al., 2019), however, they are often incomplete or unprecise (Ritter et al., 2015; Ricciardelli et al., 2017). Reanalysis data in grid format - reanalysis means retrospective analysis - can be a convenient way to estimate urban wind production potential as, on the one hand, interpolation to (narrow) grids has already been performed by experts, and on the other hand, reanalysis data avoids data imprecision or lack of completeness. Ritter et al. (2015) use Modern-Era Retrospective Analysis for Research and Applications (MERRA) data from NASA to derive the potential for large-scale wind energy production in Germany. Wilke et al. (2020) use a very narrow national grid dataset to derive the potential for wind energy production through roof installed SWTs in Berlin. Such narrow grid data, however, is not available in most regions. The approach of Rezaeiha et al. (2020) is similar to the work of Wilke et al. (2020). The main difference lies in the assessment of wind characteristics, as Rezaeiha et al. (2020) use average annual wind speed as a function of height instead of grid data. Additionally, Wilke et al. (2020) use coordinates to assign specific buildings to their respective grid cell, while Rezaeiha et al. (2020) estimate Weibull distributions to generate average wind profiles across different locations. Rezaeiha et al. (2020) apply their methodology in a case study for 18 major cities in the Netherlands. They find that a single turbine can generate between 4 and 21 MWh annually depending on the average wind conditions of a building. Wilke et al. (2020) find that if only one SWT was installed on every building that has a sufficiently large roof-surface and is at least 10 m high, almost 5% of the overall household's electricity consumption in Berlin could be produced. If multiple SWTs were installed on these buildings (the amount depends on the specific roof-surface), up to 37% of the household's electricity consumption could be produced. When this self-produced electricity is used to replace electricity obtained from the burning of lignite, 91% of lignite-related CO<sub>2</sub>-emissions could be avoided (not considering CO<sub>2</sub> emissions that are generated during the production of the turbines) (Wilke et al., 2020).

Large scale wind energy production potential in the urban environment, however, has not been the subject of many studies. Even less so when the roof installation of turbines is considered. SWTs can be installed in three different ways (Rezaeiha et al., 2020): a) The stand-alone construction of SWTs next to existing buildings (e.g., in parks or gardens), b) the integration of SWTs into the architecture of the building itself or c) roof-top installation (retrofitted). The choice of the type of turbine should be carefully considered based on the installation manner, as presented previously, the individual location characteristics and the wind conditions.

The technological development of SWTs as compared to large wind turbines is still in a fairly early stage (Cace et al., 2007). Even though it is often mentioned that large wind turbines outperform SWTs when it comes to yield-efficiency and investment costs, the conditions under which they run are completely different. It can be expected that the investment costs of SWTs

will decrease and their efficiency will increase in the future due to improved research and technical experience from the manufacturers (Cace et al., 2007; Kumar et al., 2018). Kc et al. (2019) provide a review - as of 2018 - of several studies on SWT technology in the built environment and study the performance of a specific SWT in an urban installation setting. Kumar et al. (2018) review research on vertical axis wind turbines (VAWT)<sup>2</sup>, also as of 2018. Cace et al. (2007) provide a review of manufacturers from the UK and the Netherlands and compare the technical development of SWTs. The authors recommend that more thorough investigations of urban wind characteristics are performed to adjust SWT design consistently (Kc et al., 2019).

Subsequently, we examine the potential role of urban wind farming regarding the usage of roof-mounted wind turbines. The literature review explained the focus on the applied methodology (Section 3); which is applied in Section 4 to two selected cities in the EU, namely Lisbon and Hamburg. These cities are considered to be of particular interest since both cities are located close to the sea and thus should have a high potential wind energy.

### 3. Methodology

The framework follows Rezaeiha et al. (2020) who develop a framework for measuring the preliminary, large-scale wind production potential of roof-mounted turbines. Preliminary, comparable simulation results give new insights into the neglected opportunities for the growth of urban wind-based electricity production and hence the role of a new pillar in climate policy.

The installation of roof mounted VAWT on a chosen set of existing buildings in an urban environment is simulated. The specific urban study sites are referred to as “domains”.

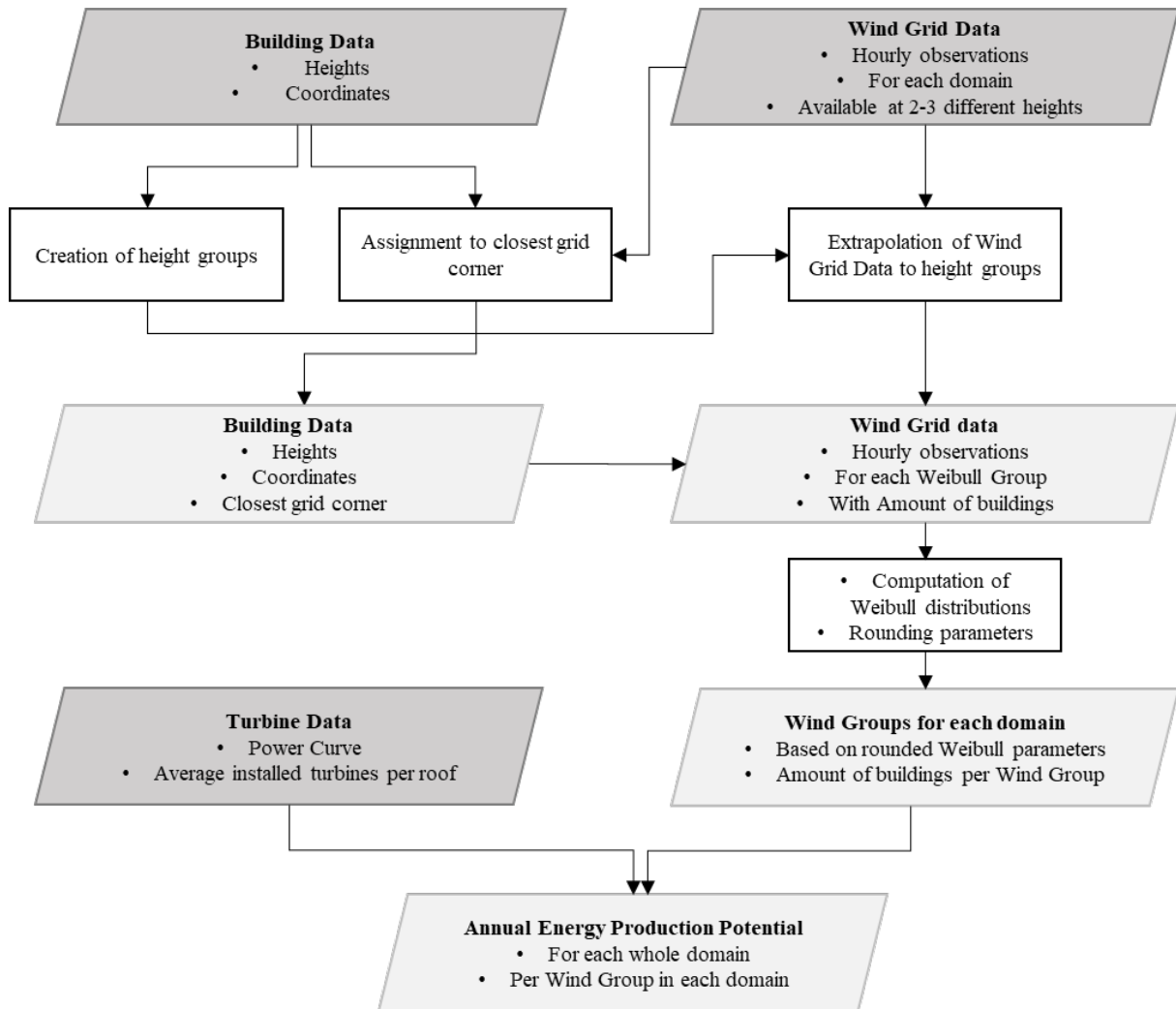
The results of this analysis are easily extendable to any city or region worldwide. This is achieved by using the reanalysis wind grid dataset MERRA2 from NASA, which is available on a global scale, which is also the main difference to the framework of Rezaeiha et al. (2020). This paper refines the assessment of wind speed characteristics in the original case study by using reanalysis wind data in grid format, which allows for a more detailed derivation of the approximate wind speed on individual buildings and provides a broader dataset for the derivation of the Weibull parameters. Input data to this analysis are building data, wind speed characteristics and turbine characteristics.

This section provides an insight into the methodology used by Rezaeiha et al. (2020) while focusing on the specific adjustments that were made which deviate from the original approach. A first graphical representation is given in Figure 2, a detailed statement of the framework follows below:

---

<sup>2</sup> For more information on different types of turbines, see Section 1.3 Turbines.

**Figure 2: A graphical representation of the framework/methodology**



Source: Own representation

### 3.1 Buildings

In a first step, the potential buildings that enter the analysis, their respective heights and their coordinates must be identified for each city. In the original framework there is no need for specific building coordinates, as no wind grid data is used.

The benchmark for buildings that are chosen as eligible for entering the analysis is set based on their potential for efficient wind harvesting. Only buildings that are not substantially overshadowed by other buildings should enter the analysis. For a preliminary estimation of wind potential, a minimum building height can serve as an easily determined benchmark. This benchmark building height can be chosen based on the average height of buildings in a city. Buildings are then sorted into height groups and a reference height  $H_r$  for each height group is defined, which in this paper will be the average of the upper and lower bound of the height group. Later, the reference height will be used to assign the annual mean wind speed distribution to each height group.

If available, the average roof-surface of these buildings might be used to determine an average number of turbines that are to be installed. However, this information can often not be easily obtained for a large set of buildings (Rezaeiha et al., 2020). In order to simplify the large-scale analysis an assumption about the average number of turbines per buildings can be made.

### ***Assignment of buildings to the closest grid-corner of the wind dataset***

Different to the original framework, this paper uses reanalysis wind grid data for the assessment of wind characteristics. Reanalysis grid data provides wind speed (and direction) observations for each corner of each raster quadrant.

Each building in the dataset must be assigned to its closest grid corner to refer it to the wind speed that is most closely related to the real wind speed on the roof-top of this specific building. The wind observations at each grid corner are then extrapolated to the reference height of each height group, such that a Weibull distribution can be measured for each height group. Detailed explanation is given in the next section.

## **3.2 Wind**

The annual wind speed distribution, as well as the average annual number of hours as a function of annual average wind speed can be obtained by fitting a Weibull distribution to hourly wind data and averaging it over a period of 10-30 years (Rodriguez-Hernandez et al., 2019; Rezaeiha et al., 2020). The two-parameter Weibull probability density function  $w(U)$  is displayed in equation (1).

$$w(U) = \frac{k}{A} \left(\frac{U}{A}\right)^{k-1} e^{-\left(\frac{U}{A}\right)^k} \quad (1)$$

The Weibull distribution has two parameters, namely the scale parameter  $A$  and the shape parameter  $k$ . The larger  $k$  is, the sharper the distribution, which indicates less variance around the mean wind speed.  $U$  is the mean annual wind speed and  $e$  is Euler's number.

The respective Weibull cumulative density function  $W(U)$  is displayed in equation (2).

$$W(U) = 1 - e^{-\left(\frac{U}{A}\right)^k} \quad (2)$$

The Weibull distribution is computed from the reanalysis wind data for data observation points (every grid corner in every studied city) and each height group. These groups will be referred to as Weibull-groups. For example, if there is one city to be studied that is comprised of one grid quadrant, then there are four grid corner points with hourly observations for each. Assuming that there are 15 height groups (previously defined by through the building data set), then there are 60 ( $4 * 15$ ) Weibull groups. A Weibull distribution function is computed for each, such that every Weibull group has individual shape and scale parameters. With the scale and shape parameters from a fitted Weibull distribution, the mean wind speed can be derived through equation (3) by mean of the gamma function  $\Gamma$ :

$$U = A * \Gamma\left(1 + \frac{1}{k}\right) \quad (3)$$

Rezaeiha et al. (2020) show that the shape and scale parameter of the Weibull distribution can also be calculated based only on annual mean wind speed and variance of wind speed. If no hourly wind speed observations over a long time-horizon are available, but only an annual mean wind speed, then the annual mean wind speed and variance can be used instead to derive the Weibull distributions. Rezaeiha et al. (2020) use this quality of the Weibull distribution for their case study for the Netherlands.

### 3.2.1 Vertical extrapolation of wind speed

Since each Weibull group needs a Weibull distribution, the available wind grid data in each grid corner point might have to be extrapolated to the reference heights  $H_r$  of the previously defined height groups. Reanalysis wind data in grid format is normally provided for different heights; however, wind speed might not be available for all reference heights. Vertical extrapolation of wind data is typically performed with either the power law approach or the logarithmic law. Gualtieri/Secci (2012) find, that the power law yields an “*accurate and better representation of wind speed profiles*” (Gualtieri and Secci, 2012, p. 183) than the logarithmic model, at least under unstable and neutral conditions. The power law (4) is also easy to apply as it only has one unknown parameter, namely the wind shear coefficient  $\alpha$ .

$$v_r = v_b * \left(\frac{H_r}{H_b}\right)^\alpha \quad (4)$$

Its objective is to compute the specific wind speed  $v_r$  at reference height  $H_r$ . For that, the wind speed  $v_b$  at the baseline height  $H_b$  is needed, as well as  $\alpha$ . As an example, assume the wind grid dataset provides wind measurements at a height of 10 m and these should be extrapolated to 20 m, then  $H_b = 10$  and  $H_r = 20$ . The wind shear coefficient  $\alpha$  relates to the intensity of

turbulence at the studied site. The amount of turbulence is important, especially in the urban environment and affects the productivity of wind turbines as well as their lifetime (Manwell et al., 2011). The coefficient can be easily derived, based on equation (4), if wind speeds at two different heights are available.

$$\alpha = \frac{\ln(v_2) - \ln(v_1)}{\ln(H_2) - \ln(H_1)}, \text{ with } H_2 > H_1 \quad (5)$$

If wind measurements at only one height are available, then the wind shear coefficient can either be approximated through the power law “rule of thumb” (Gualtieri and Secci, 2012; Elnaggar et al., 2017), assuming that  $\alpha = 1/7$ , or through approaches that include the roughness length of the ground<sup>3</sup> (Gualtieri and Secci, 2011; Wilke et al., 2020).

When each height group is assigned an individual wind dataset with hourly observations at each subdomain, then the computation of a Weibull distribution for each Weibull group is possible. The resulting Weibull-parameters are rounded to one decimal place or more, such that it becomes viable to aggregate the Weibull groups to wind groups if they have the same shape and scale parameters.

From the Weibull cumulative density function (equation (2)), the average annual number of hours as a function of annual average wind speed can be derived for specific wind bins and each wind group, as shown in equation (6), with 8760 representing the numbers of hours of one year.  $U_{j+1}$  is the upper bound of the wind speed bin and  $U_j$  is the lower bound.

$$h(U) = 8760 * (w(U_{j+1}) - w(U_j)) \quad (6)$$

### 3.2.2 Creation of wind groups and assignment of buildings

Since each building has already been assigned to its closest grid-corner (and are consequently assigned to a Weibull-group), they can now easily be allocated in a wind group, independently of their location.

The construction of wind groups is special in the approach of Rezaeiha et al. (2020). Their simplified approach to assess wind speeds in the turbulent urban environment avoids the unsatisfying assignment of wind-speeds depending on geographical features, but groups buildings (almost) independently of their location by generalizing wind conditions. The

---

<sup>3</sup> The roughness length of the ground defined approximately as one-tenth of the average height of surface roughness elements (buildings, trees, etc.) WMO (2008).



addition of reanalysis wind grid data to their approach adds somewhat more accuracy, as buildings are initially assigned to their closest grid corner before being put into wind groups. In this approach each domain is assigned an own array of wind groups.

### 3.3 Turbine

This analysis studies the potential of roof top installed SWTs in the urban environment. Roof mounted turbines are especially interesting in cities as this installation method does not require additional space – a very limited resource in densely populated areas. Furthermore, buildings provide an already existing high “tower”-structure for the turbines, such that better wind conditions in higher altitudes can be used without building a tower.

The rated capacity, or nominal power, is typically used to categorize wind turbines. It is the production output that a turbine produces under optimal (very strong) wind conditions. Even though it is not a good indicator for the average level of production under normal wind conditions, the rated capacity serves as grouping-benchmark. The categorization of wind turbines into small and large wind turbines is however not consistent (BWE, 2011; Tummala et al., 2016; Rezaeiha et al., 2020). The German Wind Energy association (BWE) provides an overview of the international categorizations of SWTs<sup>4</sup> and develops a definition of categories for SWTs based on an international comparison (BWE, 2011). Accordingly, SWTs that are applicable for roof top installation generally have a rated capacity of 1.5-5 kW and are considered micro-turbines (a sub-class of SWTs) (BWE, 2011). They can either be installed in an off-grid system, where all energy produced is consumed or stored at the site of production, or as an integrated system, where excess-energy is fed into the grid.

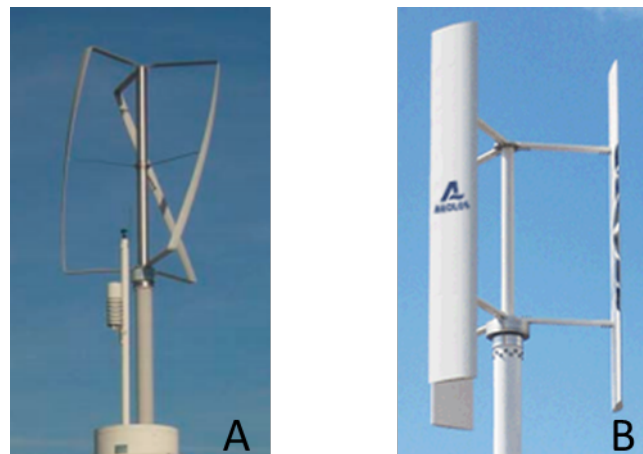
There are two main types of SWTs (Cace et al., 2007). Horizontal axis wind turbines (HAWTs) have a rotor shaft that lies horizontally to the wind, while vertical axis wind turbines (VAWT) rotate perpendicular to the wind. HAWTs are widely applied in offshore and onshore wind farms and their technical development is more mature as compared to VAWT. HAWTs are found to produce energy much more efficiently under steady wind flows (Cace et al., 2007; Johari et al., 2018). However, VAWT are more suitable for the urban environment, as they do not require steady wind streams but profit from highly turbulent and skewed winds (Mithraratne, 2009; Toja-Silva et al., 2013; Battisti et al., 2018; Johari et al., 2018) and cope relatively well with weak or unstable wind conditions (Battisti et al., 2018; Kumar et al., 2018). Fazlizan et al. (2019) find that VAWT generate a higher output under skewed wind flows than HAWTs and even perform better in skewed than in normal wind flows. Skewed wind flows are common in the urban environment as wind flows are diverted by many obstacles. VAWT can often be installed on the roof-top of existing buildings, such that no additional space is consumed. VAWT also produce lower noise levels than HAWTs (Cace et al., 2007; Battisti et al., 2018) and are less visually intrusive (Cace et al., 2007).

---

<sup>4</sup> The report is based on categorizations of the British Wind Energy Association (BWEA), the American Wind Energy Association (AWEA) and the European Wind Energy Association (EWEA, now: WindEurope) (BWE (2011)).

There are two main types of VAWT, specified by their rotor types: The Darrieus rotor VAWT and the Savonius rotor VAWT. The Savonius rotor works drag-based and is normally used for purposes with very low energy demand, such as small pumping systems or rotating advertisements (BWE, 2020). Under its drag-based system, the wind pushes the blades such that the rotation speed is always lower than the wind speed (Cace et al., 2007). The traditional Darrieus rotor has curved blades and works lift-based, which makes it possible for the rotor to spin faster than the wind speed (Cace et al., 2007). Therefore, the Darrieus-rotor produces energy more efficiently than the Savonius rotor (Cace et al., 2007; BWE, 2020). Variations of the original Darrieus rotor that perform more efficiently than the traditional form are the H-Darrieus rotor with straight blades (BWE, 2020; Jüttemann, 2020) and the helical VAWT (Rezaeiha et al., 2020). Both last mentioned rotor types should be considered when selecting a specific roof installed VAWT for the urban environment. Figure 3 displays a H-Darrieus rotor VAWT (A) and a helical VAWT (B) that are currently available on the market.

**Figure 3: Vertical Axis Wind Turbines (VAWT): A - helical VAWT B - H-Darrieus rotor VAWT**



Source: Aeolos 1kW by Aelos <https://www.windturbinestar.com>; H-Darrieus rotor VAWT (Turby by Turby b.v.; [www.turby.nl](http://www.turby.nl))

There are also some manufacturers who experiment with other types of SWT, such as the modification of a HAWT, called Energy Ball (C), also known as Venturi-wind-turbine (Cace et al., 2007; Elshazly et al., 2019), or a modified VAWT (D), that is currently being developed by the Complutense University of Madrid and supported by the Horizon 2020 program of the European Commission (European Commission, 2020b). Both innovations are stated to be applicable for roof-top installation and operation in the urban area (European Commission, 2020b; Cace et al., 2007) (see Figure 4). It should also be noted that most recent technological developments in the urban wind sector includes HAWTs as well. In its sector monitor for 2020, the German Wind Energy Agency (BWE) recommends only one wind turbine that is applicable for roof-installation in the urban environment: A small, modular HAWT from the Berlin start-up MOWEA (E) (BWE, 2019). Even though the rated capacity of a single MOWEA turbine is quite small (0.5 kW), the turbine is designed for modular assembling of multiple turbines, both vertically and horizontally.

**Figure 4: Vertical Axis Wind Turbines (VAWT): A - helical VAWT B - H-Darrieus rotor VAWT**



Source: Energy Ball (C) (Cace et al., 2007). EOLI FPS wind turbine (D) (European Commission, 2020b). MOWEA wind turbine (E) (BWE, 2019)

For this framework, the power curve of the exemplary turbine that is chosen for the analysis is needed. The power curve describes the energy output of a turbine depending on the wind speed that enters the turbine and is typically provided by the manufacturer. If the power curve is not available, it can, for instance, also be obtained through computational fluid dynamics (Simões and Estanqueiro, 2016; Toja-Silva et al., 2018).

Additionally, the number of turbines on each building must be determined. The maximum number of turbines that can be installed on a building is mainly influenced by the roof-surface, the width of the turbine and the safety distance that must be maintained between turbines. Additionally, especially for real-world installation analysis, one should consider static aspects of the building structure and, where applicable, the wake effect between turbines as well as the optimal positioning towards the main direction of wind.

### 3.4 Wind energy potential

The annual wind energy potential is calculated for each domain and, more detailed, for each height group in each domain. This gives preliminary insights on the wind energy potential of a whole domain and additionally on the production potential of specific height groups. It also allows for the comparison of the production potential of height groups among domains.

It should be considered that turbines have a mutual influence on their energy output, when installed close to each other. A turbine processing wind from the front will create a trail of turbulence and slow down the wind behind itself (wake). This wake effect causes turbines that are installed too close to each other not to receive full wind input. Corscadden et al. (2013) observe a reduction of the power output of small horizontal turbines of 25% 5.7 diameters downwind. Bayeul-Lainé et al. (2013) find, that the power coefficient<sup>5</sup> of VAWT in a linear positioning is reduced by 18-72% as compared to a triangular positioning. Rezaeiha et al. (2020) use the coefficient  $C_w = 0.88$  to account for the mutual influence of closely installed VAWT. Their coefficient is based on a study by Sahebzadeh et al. (2020) and derived as described here: “The coefficient is estimated based on an extensive number of high-fidelity CFD simulations for a dual array of turbines with various relative spacing (distance within  $1.25d$  to

---

<sup>5</sup> The power coefficient is the ratio between electric power produced by a turbine and the total wind power that meets the blades. It is commonly used to measure the efficiency of a turbine.

10d [ $d$ : turbine diameter], angles within  $-90^\circ$  to  $90^\circ$ ) and different relative rotational directions (co- and counter-rotating)” (Rezaeiha et al., 2020, p. 7). This approach uses the same wake coefficient as Rezaeiha et al. (2020), namely  $C_W = 0.88$ . The annual wind energy potential ( $AEPP_{total,j}$ ) for a domain  $d$  can therefore be calculated as displayed in equation (7):

$$AEPP_{d,total} = C_W * \sum_{i=1}^N AEPP_{d,total,i} \quad (7)$$

$AEPP_{d,total,i}$  is the total annual wind energy production potential of wind group  $i$  in domain  $d$ .  $NB_i$  is the number of buildings per wind group  $i$  and  $NT$  is the average number of turbines that are installed on each building. The derivation of  $AEPP_{d,total,i}$  is shown in equation (8).

$$AEPP_{d,total,i} = AEPP_{d,i} * NB_{d,i} * NT \quad (8)$$

$AEPP_{d,i}$  is the annual wind energy production potential of a single turbine in domain  $d$ , in wind group  $i$  and it is calculated through equation (9).

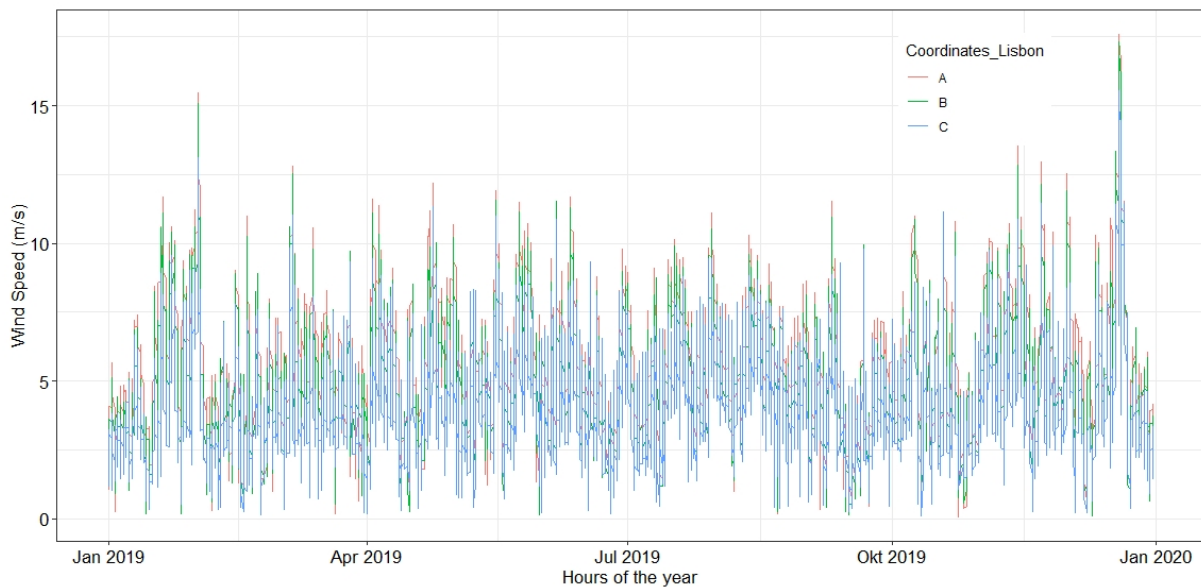
$$AEPP_{d,i} = \sum_{j=1}^M \frac{P_j + P_{j+1}}{2} * 8760 * \left[ e^{-\left(\frac{U_j}{A_i}\right)^{k_i}} - e^{-\left(\frac{U_{j+1}}{A_i}\right)^{k_i}} \right] \quad (9)$$

$M$  is the total number of wind speed bins,  $P_j$  denotes the turbine power output at the lower bound wind speed of wind speed bin  $j$  and  $P_{j+1}$  denotes the power output at the upper bound of wind speed bin  $j$ . The power output of a specific wind speed is derived from the power curve of the turbine.  $U_j$  is the corresponding lower bound wind speed of wind speed bin  $j$ ,  $U_{j+1}$  is the upper bound wind speed of wind speed bin  $j$ . The average power output of a single turbine  $\left(\sum_{j=1}^M \frac{P_j + P_{j+1}}{2}\right)$  is multiplied with the average number of hours per year (8760) and with the probability of obtaining wind speeds belonging to wind speed bin  $j$ , given the shape and scale parameters  $A_i$  and  $k_i$  and the respective wind group  $i$ . The probability is derived from the Weibull cumulative distribution function, displayed in equation (2).

## 4. Empirical analysis

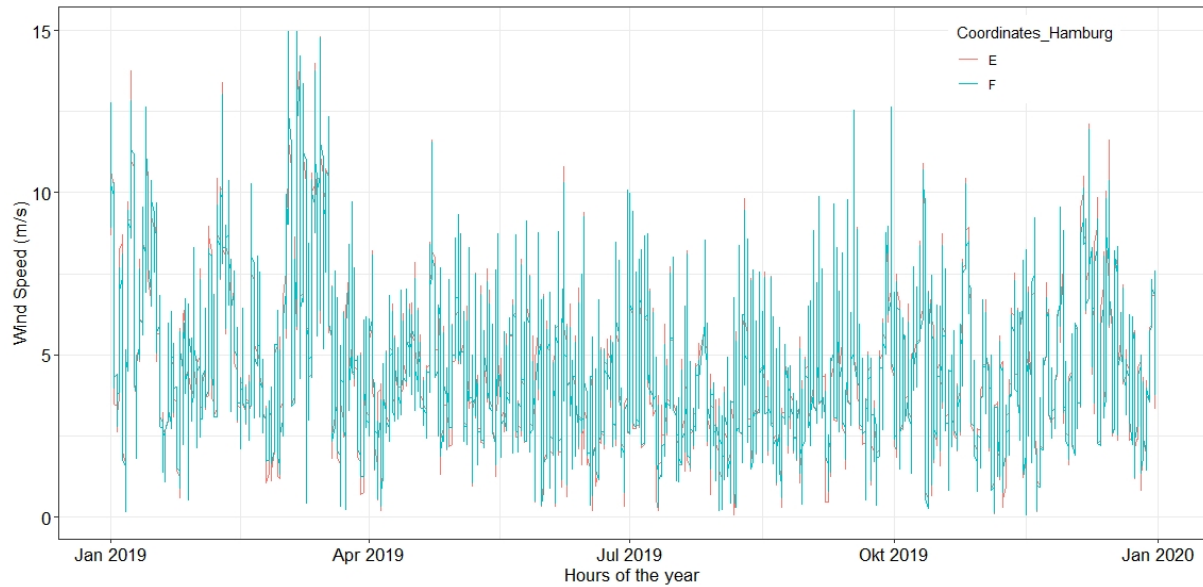
This analysis takes into consideration the cities of Hamburg and Lisbon which have considerable wind-farming potential, especially due to their respective locations close to the coast. In 2019, Lisbon had a mean wind speed of 5.1 m/s across all MERRA2 coordinates that comprise the city. Figure 5 displays hourly wind speeds in 2019 from reanalysis data (MERRA2) at three different coordinates. For the specific location of the coordinates, see Figure 6. It can be observed, that in the winter months wind speeds are considerably higher than in summer months. This is quite interesting if an adequate mix of solar and wind power is to be exploited during the year as solar power generation is typically rather modest in the winter period.

**Figure 5: Hourly wind speeds in 2019 for the three MERRA2-coordinates comprising Lisbon.**



Source: Own representation based on MERRA2 data (NASA, 2019)

**Figure 6: Hourly wind speeds in 2019 for the two MERRA2-coordinates comprising Hamburg.**



Source: Own representation based on MERRA2 data (NASA, 2019)

## 4.1 Building data

The building data for this analysis is obtained from [www.emporis.com](http://www.emporis.com), a global provider of building information. Their openly available online database comprises different types of buildings for over 18,000 cities worldwide, amongst other attributes including the building height, building type (e.g., “high-rise building”, “low-rise building”, “skyscraper”), status (e.g., “existing”, “under construction”, “demolished”) and, in most cases, also address (Emporis, 2020).

This analysis only includes building types have a high chance of being good locations for wind turbines, i.e., are sufficiently high and are likely to provide a large-enough roof-surface. The considered building types as used by Emporis (2020), are listed in Table 1.

**Table 1: Definition of building types used in the analysis.**

<b>Building type</b>	<b>Definition</b>
Skyscraper	A multi-story building at least 100 meters tall.
High-rise building	A multi-story structure between 35-100 meters tall, or a building of unknown height from 12-39 floors.
Low-rise building	An enclosed structure below 35 meters which is divided into regular floor levels.
Stadium	An indoor or outdoor arena for sporting events and spectators.
Hall	An enclosed structure dominated by very large undivided spaces.

Source: Emporis (2020)

Buildings below 20 m are excluded from the analysis, as they are more likely to be covered by surrounding buildings. Additionally, only buildings that are already existing or are being under construction enter the analysis (buildings with status “planned”, “demolished” or “unbuilt” are excluded). Table 2 displays the number of buildings of each building type that enter the analysis for each city.

**Table 2: Number of buildings per building type in each city**

<b>City</b>	<b>Skyscraper</b>	<b>High-rise</b>	<b>Low-rise</b>	<b>Stadium</b>	<b>Hall</b>	<b>Sum</b>
<b>Hamburg</b>	3	254	451	2	0	<b>710</b>
<b>Lisbon</b>	3	224	36	0	1	<b>264</b>

Source: Own representation of data based on EMPORIS data (Emporis, 2020).

Each building must now be assigned to height groups according to the minimum and maximum building height across all domains. For this analysis, height groups are separated in 10 m steps. The reference height is chosen based on the average between the lower and upper bound of the height group range. Table 3 displays the chosen height groups and the corresponding number of buildings in each subdomain. Note, that for the height groups, the lower limit is inclusive and the outer limit exclusive, e.g., for height group 1 it holds that:

$$20 \leq \text{height} < 30.$$



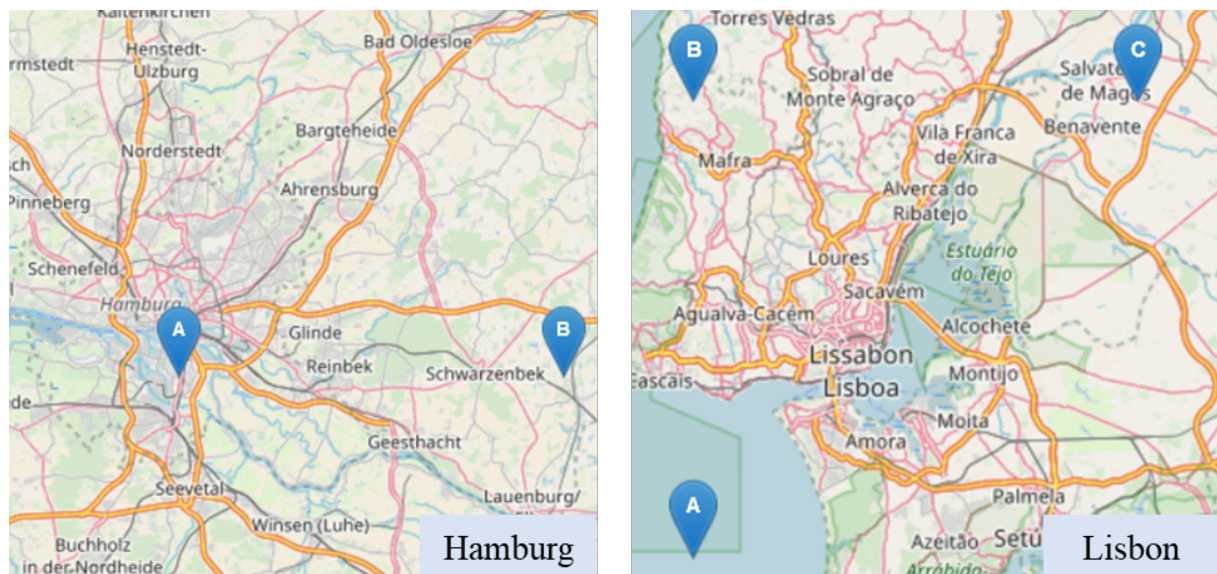
**Table 3: Height groups, reference heights and respective number of buildings per city**

Height Group			Domain		
	Range	H <sub>r</sub>	Hamburg	Lisbon	Sum
1	20-30	25	348	9	
2	30-40	35	94	30	
3	40-50	45	113	70	
4	50-60	55	104	106	
5	60-70	65	25	23	
6	70-80	75	13	17	
7	80-90	85	5	4	
8	90-100	95	5	2	
9	100-110	105	2	1	
10	110-120	115	1	2	
Sum			710	264	

Source: Own calculations

Following the assignment to height groups, the next stage is to prepare the building dataset for the merging with the wind data. In order to assign each building to its closest MERRA2 grid corner, coordinates for each relevant building was added manually through a [Google Maps](#) search. The assignment of the closest grid corner is done through the minimization of the distance between building and available grid corners, such that the best available wind speed observation is used for the further analysis. Figure 7 displays the closest MERRA2 grid coordinates for the relevant buildings in each domain.

**Figure 7: Relevant MERRA2 coordinates for the sample domains**



Source: Own representation through [Geoplaner](#) (2020) and [OpenStreetMap](#) (2020).



The building dataset now comprises the building location (through coordinates) and the building height. In a next step, wind data must be prepared for the merging with the building data.

## 4.2 Wind data

The Modern-Era Retrospective analysis for Research and Applications version 2 (MERRA2) dataset from NASA comprises reanalysis data for different weather/climate variables from 1980 to the present day. The MERRA2 data is well suited for long-term analysis and comparison as it combines reliable and complete weather observations in a standardized manner on a global scale, mitigating observation gaps of meteorological stations and long-distance interpolation.

In this analysis, we use a time-averaged, two-dimensional data collection with hourly observations (short name: M2T1NXSLV) (GES DISC, 2020) over 30 years (1990 to 2019)<sup>6</sup> (Global Modeling And Assimilation Office and Pawson, 2015). The dataset is available in a grid with a spatial resolution of  $0.5^\circ \times 0.625^\circ$ , which roughly corresponds to 55 km x 54 km in Lisbon and to 55 km x 41 km in Hamburg. For each grid quadrant, there are four wind observations; located in each corner of the grid.

Wind data is available at 2 m, 10 m and 50 m above ground and consist of eastward (u) and northward (v) wind vectors that allow the calculation of wind speed (ws) and direction. The calculation of wind speed is straightforward and performed using the Pythagorean Theorem as displayed in equation (10).

$$ws = \sqrt{u^2 + v^2} \quad (10)$$

The u-vector runs parallel to the x-axis; a positive u is wind from the west, a negative u is wind from the east. The v-vector runs parallel to the y-axis; a positive v is wind from the south, a negative v is wind from the north (George Mason University, 2014).

### *Vertical extrapolation of wind data*

The wind speed data at each relevant raster corner of the MERRA2 dataset is extrapolated to the reference height of the height groups (see Table 3) for each domain. Vertical extrapolation is performed through the application of the power law (equation (2)), with an individual wind shear coefficient (equation (3)) being calculated for each hourly wind speed datapoint. For height group 1 ( $H_r = 25m$ ), 10 m is used as a baseline height  $H_b$ , for the other height groups, 50 m is the baseline height  $H_b$ . The corresponding baseline height was chosen based on the smallest distance of the reference height of a height group to the available MERRA2 reanalysis wind measurement (note that MERRA2 wind data is available at 2 m, 10 m and 50 m). The wind shear coefficient  $\alpha$  is calculated for each hour and coordinate of the wind dataset for each

---

<sup>6</sup> In the Hamburg MERRA2 dataset, five files were damaged, corresponding to four days (120 hours) of wind data. These hourly observations could not be included in the analysis. This however should not affect the general results.

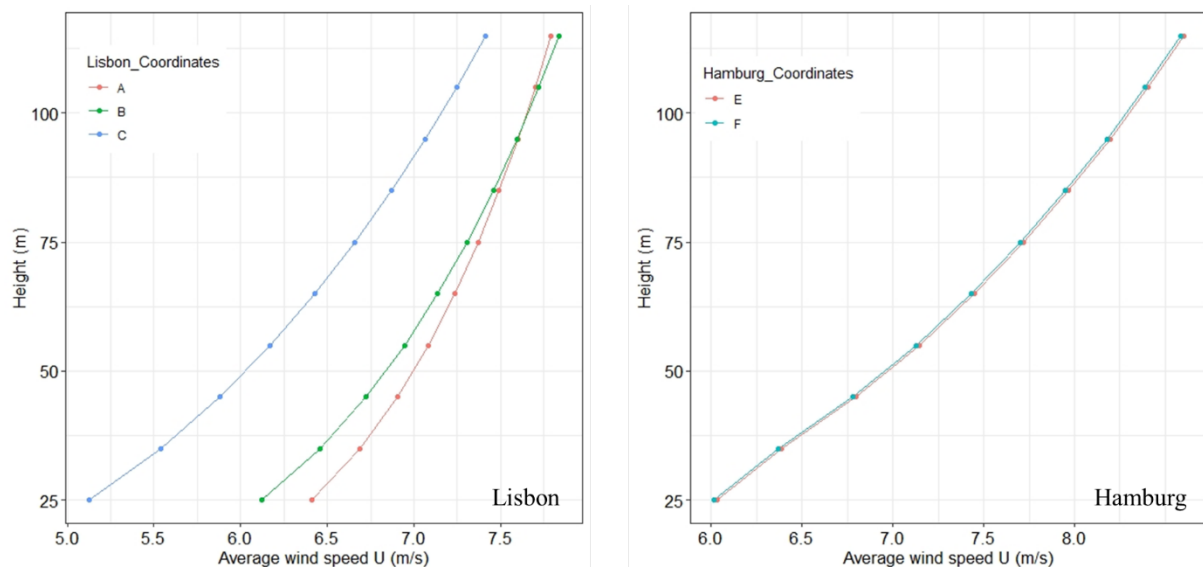
domain, according to equation (4). For equation (4) wind speeds at two different heights are required, here the available MERRA2 wind data at 2 m and 50 m were used to derive the wind shear coefficient. In some cases, the wind shear coefficient is negative which seems counterintuitive for the extrapolation of wind speeds. Extrapolated wind speeds that are derived with a negative wind shear coefficient are smaller than the wind speed at the wind speed at reference height. Although counterintuitive, negative wind shear coefficients are determined by the available data and must therefore be included.

### ***Weibull groups***

For each domain there is now a table with hourly wind speeds at each relevant MERRA2 raster corner and each reference height available. For Lisbon, there are three relevant raster corners and ten height groups, which results in 30 Weibull groups. For Hamburg, there are two relevant raster corner and also 10 height groups, such that 20 Weibull groups are derived.

Figure 8 shows the (undisturbed) mean wind speeds for each reference height and each MERRA2 raster corner for the sample cities.

**Figure 8: Undisturbed average wind speeds at reference heights**



Source: Own calculations and representation

It is striking that the wind speeds at the MERRA2 raster corner (coordinates) in Hamburg show very similar average wind speeds, as compared to the raster corner average wind speeds in Lisbon. This might primarily be due to the location of the raster corners, as displayed in Figure 7. The coordinates in Hamburg are both located on the mainland without obstacles (such as other cities or mountains) or fallow land (that allows for the undisturbed flow of wind) in between.

For each Weibull group, the parameters of the Weibull distribution (shape parameter  $A$  and scale parameter  $k$ ) are derived through appliance of a maximum likelihood estimation.

Additionally, each building is assigned a Weibull group, depending on its affiliation to its closest MERRA2 raster corner and its affiliation to a height group.

### ***Wind groups***

The shape and scale parameters of the Weibull groups in each domain are rounded in order to reduce the total number of wind groups. For Lisbon, there is much more variation in the scale parameter  $A$ , wherefore it is rounded to a full number and the shape parameter  $k$  is rounded to one decimal place. Consequently, seven wind groups are created. Wind speeds in Hamburg do not show as much variation in the scale parameter as compared to the shape parameter. Therefore, both Weibull parameters are rounded to one decimal place, which leads to 10 wind groups for Hamburg.

The wind groups with their Weibull distribution parameters, their mean wind speeds and the number of affiliated buildings is shown in Table 4.

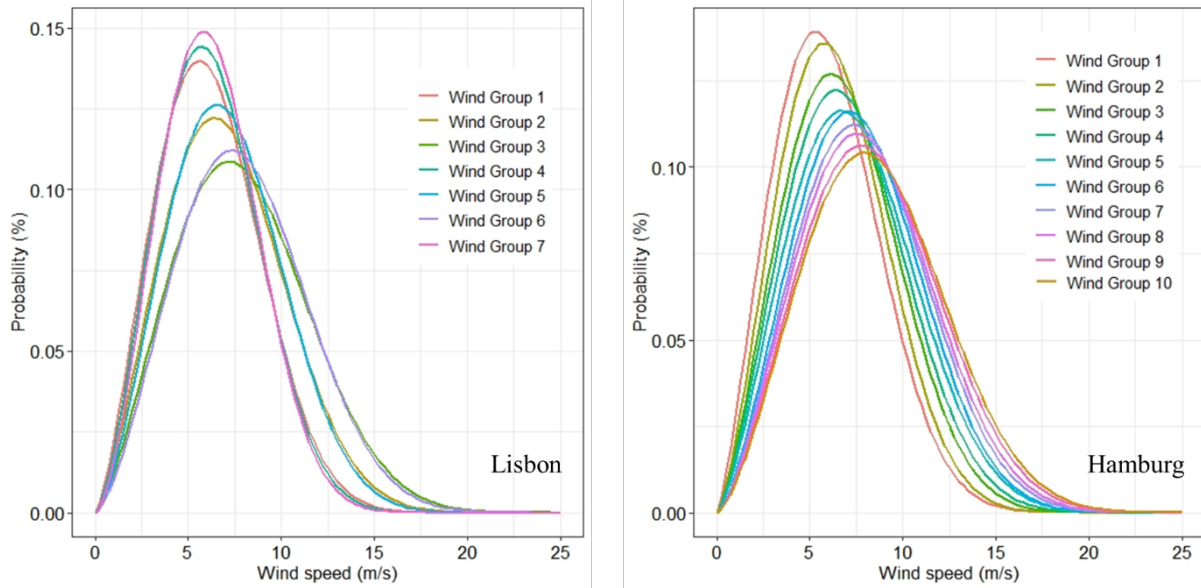
**Table 4: Wind Groups Lisbon, with Weibull parameters and affiliated buildings.**

<b>Wind Groups Lisbon</b>				<b>Wind Groups Hamburg</b>		
	<b>A</b>	<b>k</b>	<b>Number of buildings</b>	<b>A</b>	<b>k</b>	<b>Number of buildings</b>
<b>1</b>	7.0	2.4	9	6.8	2.3	348
<b>2</b>	8.0	2.4	159	7.2	2.4	94
<b>3</b>	9.0	2.4	3	7.7	2.4	113
<b>4</b>	7.0	2.5	4	8.0	2.4	104
<b>5</b>	8.0	2.5	85	8.4	2.4	25
<b>6</b>	9.0	2.5	2	8.7	2.5	13
<b>7</b>	7.0	2.6	2	9.0	2.5	5
<b>8</b>				9.2	2.5	5
<b>9</b>				9.5	2.5	2
<b>10</b>				9.7	2.5	1

Source: Own calculations and representation

The associated Weibull distributions for each wind group in each domain are plotted in Figure 9.

**Figure 9: Weibull distributions for wind groups**



Source: Own calculations and representation

After the determination of rounded scale and shape parameters for each wind group, the number of hours depending on the wind speed can be derived. The wind speed range in each domain, as well as the cut-in and cut-off wind velocity of the sample turbine, determines the wind speed bins for which the number of hours are derived from the Weibull cumulative distribution function  $W(U)$ , as displayed in equation (2). The cut-in wind speed of the chosen turbine is 2.5 m/s and has a survival wind speed of 52.5 m/s. Due to the high survival wind speed, the maximum wind speed among the Weibull groups determines the upper bound of the wind speed bins, namely 32 m/s. 15 wind speed bins are consequently derived.

### 4.3 Turbine Data

For this analysis, a small 4-bladed VAWT (H-Darrieus rotor) was selected. The manufacturer Aeolos offers three types of VAWT that are all applicable for roof-top installation. Here, the most powerful VAWT, namely Aeolos-V-3kW, is chosen. Basic technical information on the turbine is given in Table 5.

**Table 5: Technical data of the sample turbine Aeolos-V-3kW**

<b>Aeolos-V-3kW turbine</b>	
Manufacturer	Aeolos Wind Energy Ltd.
Rated wind speed	11 m/s
Rated power	3 kW
Maximum power	3.8 kW
Cut-in speed	2.5 m/s
Survival wind speed	52.5 m/s
Rotor height	3.6 m
Rotor width	3 m
Total weight	106 kg
Noise level	< 45 dB(A)
Warranty	5 years
Design Lifetime	20 years
Blades RPM limitation	320 RPM

Source: Aeolos product booklet for Aeolos-V-3kW (see Appendix 1), provided on request from the manufacturer (Aeolos Windenergie GmbH, 2020)

The low cut-in wind speed of 2.5 m/s allows for an almost continuous wind energy production even at any available wind speed. However, the Aeolos-V-3kW turbine also deals well with higher wind speeds and survives velocities of 52.5 m/s. The maximum power output of 3.8 kW is generated at a wind speed of 13 m/s. Compared to the wind conditions in the sample domains, displayed in Table 6, the turbine should perform well and safely. Additional security, especially at high wind speeds, is provided by a limitation to the blade rotation per minute and a mechanical break that can be activated automatically or manually.

**Table 6: Minimum and maximum wind speeds in the sample domains**

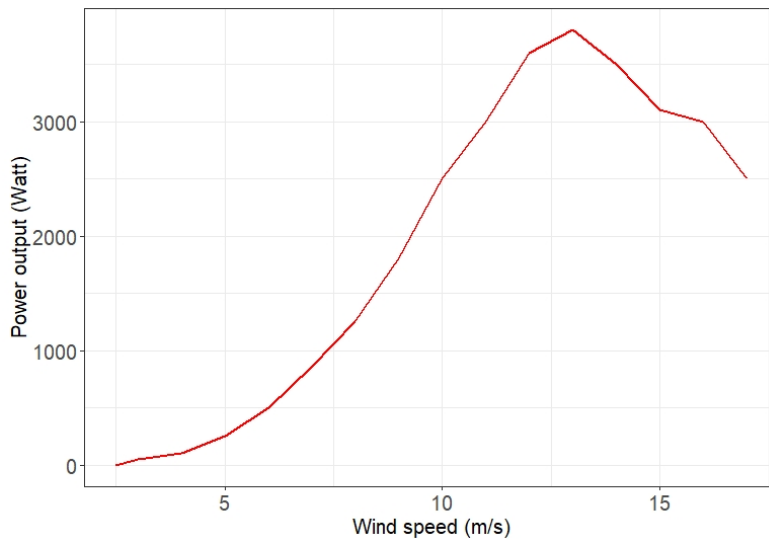
	<b>Minimum wind speed among all Weibull groups</b>	<b>Maximum wind speed among all Weibull groups</b>
<b>Lisbon</b>	0 m/s	31.4 m/s
<b>Hamburg</b>	0 m/s	31.6 m/s

Source: Own calculations

The noise level of the Aeolos-V-3kW turbine is very low (< 45 dB(A)); i.e., less noisy than a common household refrigerator, which emits approximately 55 dB(A) (EHS Yale, 2020). The manufacturer provides a power curve in the product brochure, which determines the power output of the turbine for wind speeds up to 16 m/s for a total of 15 wind speeds. Unfortunately,

no further information on the performance of the turbine for higher wind speeds could be obtained. Therefore, a constant power output of 2.500 W is assumed for wind speeds from 17 m/s to 35 m/s. Higher wind speeds are not part of the datasets of the sample domains. From the available values, the power curve was extended to the whole range (2.5 m/s-35 m/s) by curve fitting. The power curve can then be stated as displayed in Figure 10. As the power output is assumed to stay constant after reaching an input wind speed of 17 m/s, in the graphical representation, the power curve is only shown until this limit.

**Figure 10: Power curve of the sample turbine Aeolos-V-3kW**



Source: Own calculations based on information in the product booklet for Aeolos-V-3kW (see Appendix 1),

Rezaeiha et al. (2020) assume the arrangement of 12 counter-rotating VAWT per building roof, while considering the mutual performance impact (wake effect) of the turbines through the constant coefficient  $C_W = 0.88$ . The coefficient was derived for a dual array of turbines with co- and counter-rotational directions and relative spacings between 1.25 to 10 turbine diameters. The rotor width of the Aeolos-V-3kW sample turbine is 3 m, which corresponds to a diameter of 6 m. This is six times the diameter of the sample turbine used by Rezaeiha et al. (2020), wherefore this analysis assumes a considerably lower average number of turbines per roof, namely four - counter-rotational installed on each building corner (most buildings are likely to have a rectangular shape).

## 4.4 Wind energy potential in each domain

The subsequent tables show the results of the wind energy production potential analysis for the different domains, following equations (7) - (9). The annual energy production potential of a single turbine per wind group and wind bin -with the mean wind speed per wind group  $U$  (m/s) derived with equation (3) -, is given in Table 6. It displays how much annual energy production potential a single turbine has in the city of Lisbon or Hamburg respectively, assuming the probability distribution of wind speeds for each wind group. Even though higher wind speeds

produce a higher energy output, the production potential for higher speeds (e.g., wind speed bin 30-32) is rather low or even close to zero for many wind groups, as those very high wind speeds are rare throughout an average year. For a better illustration, see also Figure 7 and 8, where the Weibull distributions for Lisbon and Hamburg are presented. Note that the AEPPs in Tables 7 and 8 are displayed in rounded kWh units. In Lisbon, the sum of the AEPP for each wind group indicates that wind group 3 has the highest energy production potential, closely followed by wind group 6, which additionally has the highest AEPP per wind bin (wind speed bin 10-12 m/s), and wind group 2. In Hamburg, the highest aggregate AEPP is generated by wind group 10, followed by wind groups 8 and 7. Wind group 10 additionally displays the highest AEPP per bin, at average wind speeds between 10-12 m/s.

**Table 7: AEPP (kWh) of a single turbine at different wind speed bins, for each wind group - Lisbon**

<b>Lisbon</b>	<b>Wind Groups</b>						
<b>Wind speed bins (m/s)</b>	<b>1</b>	<b>2</b>	<b>3</b>	<b>4</b>	<b>5</b>	<b>6</b>	<b>7</b>
<b>2.5-4</b>	65	50	4	64	48	37	6
<b>4-6</b>	707	583	477	722	588	476	736
<b>6-8</b>	1,909	1,823	1,646	1,985	189	1,693	2,061
<b>8-10</b>	2,581	3,067	3,198	2,633	3,179	3,328	2,678
<b>10-12</b>	1,841	2,945	3,736	1,761	2,959	3,842	1,673
<b>12-14</b>	653	1,531	2,499	555	1,436	2,471	464
<b>14-16</b>	125	472	1,053	89	396	97	6
<b>16-18</b>	15	101	328	8	7	272	4
<b>18-20</b>	1	17	87	1	10	63	0
<b>20-22</b>	0	2	20	0	1	12	0
<b>22-24</b>	0	0	4	0	0	2	0
<b>24-26</b>	0	0	1	0	0	0	0
<b>26-28</b>	0	0	0	0	0	0	0
<b>28-30</b>	0	0	0	0	0	0	0
<b>30-32</b>	0	0	0	0	0	0	0
<b><math>AEPP_{Lisbon,i}</math></b>	<b>7,898</b>	<b>10,591</b>	<b>13,053</b>	<b>7,817</b>	<b>8,812</b>	<b>12,292</b>	<b>7,628</b>
<b>A</b>	7	8	9	7	8	9	7
<b>k</b>	2.4	2.4	2.4	2.5	2.5	2.5	2.6
<b>U (m/s)</b>	6.2	7.1	8.0	6.2	7.1	8.0	6.2

Source: Own calculations

**Table 8: AEPP (kWh) of a single turbine at different wind speed bins, for each wind group - Hamburg**

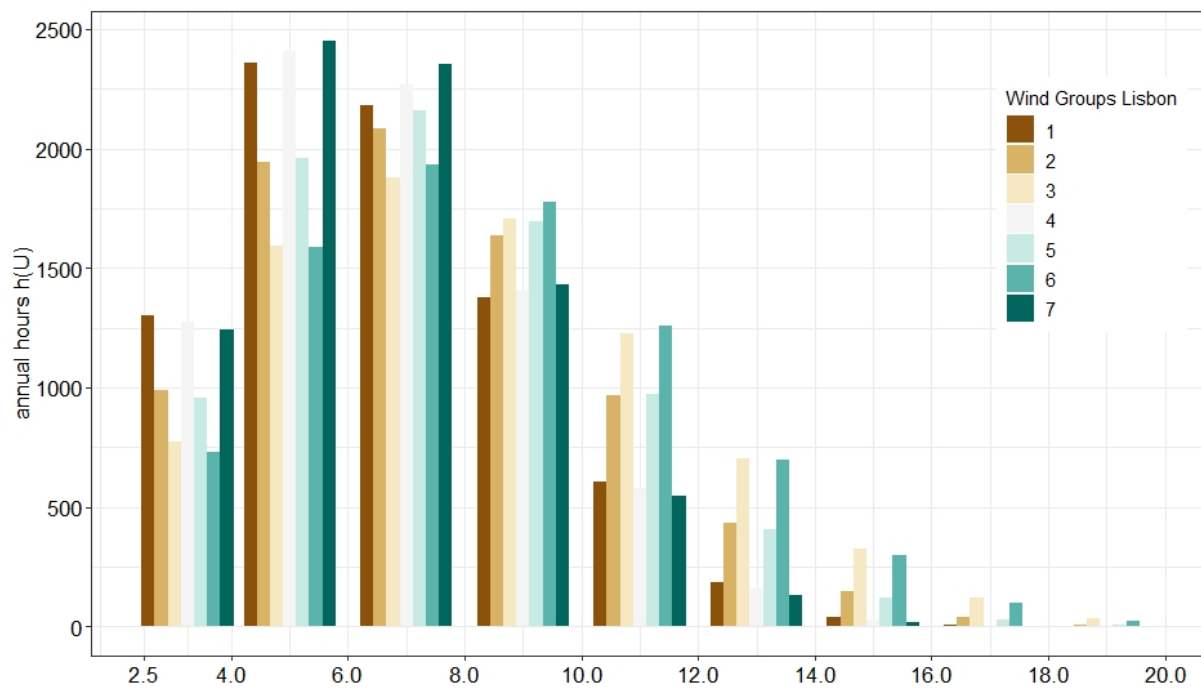
<b>Hamburg</b>	<b>Wind Groups</b>									
<b>Wind speed bins (m/s)</b>	<b>1</b>	<b>2</b>	<b>3</b>	<b>4</b>	<b>5</b>	<b>6</b>	<b>7</b>	<b>8</b>	<b>9</b>	<b>10</b>
<b>2.5-4</b>	7	6	5	50	45	40	37	35	32	31
<b>4-6</b>	715	681	618	583	538	507	476	456	428	411
<b>6-8</b>	1,829	1,904	1,863	1,823	1,758	1,757	1,693	1,650	1,584	1,540
<b>8-10</b>	24	2,712	2,964	3,067	3,155	3,317	3,328	3,322	3,298	3,273
<b>10-12</b>	169	2,076	2,638	2,945	3,307	3,621	3,842	3,968	4,126	4,211
<b>12-14</b>	614	806	1,244	1,531	1,925	2,165	2,471	2,668	295	3,122
<b>14-16</b>	125	173	340	472	68	776	97	1,109	132	1,466
<b>16-18</b>	17	24	63	101	173	2	272	332	435	510
<b>18-20</b>	2	2	9	17	36	39	63	83	121	152
<b>20-22</b>	0	0	1	2	6	6	12	17	3	39
<b>22-24</b>	0	0	0	0	1	1	2	3	1	8
<b>24-26</b>	0	0	0	0	0	0	0	0	1	1
<b>26-28</b>	0	0	0	0	0	0	0	0	0	0
<b>28-30</b>	0	0	0	0	0	0	0	0	0	0
<b>30-32</b>	0	0	0	0	0	0	0	0	0	0
<b><i>AEPP<sub>Hamburg,i</sub></i></b>	<b>3,501</b>	<b>8,385</b>	<b>9,745</b>	<b>10,591</b>	<b>11,011</b>	<b>12,229</b>	<b>12,292</b>	<b>13,644</b>	<b>10,456</b>	<b>14,767</b>
<b>A</b>	6.8	7.2	7.7	8	8.4	8.7	9	9.2	9.5	9.7
<b>k</b>	2.3	2.4	2.4	2.4	2.4	2.5	2.5	2.5	2.5	2.5
<b>U (m/s)</b>	6.0	6.4	6.8	7.1	7.4	7.7	8.0	8.2	8.4	8.6

Source: Own calculations

The number of hours for each wind speed bin during one year are shown in subsequent Figures 11 and 12. Since wind speeds over 20 m/s are very rare, wind speed bins in these figures are cut at this benchmark for the sake of a clear graphical representation. Although for the calculation of the annual energy production, all wind speed bins are included. Finally, Tables 9 and 10 show the AEPP for each domain. In Lisbon, approximately 9,203 MWh can annually be produced through the installation of four turbines on 264 buildings. In Hamburg, the AEPP amounts to 16,927 MWh, produced by four turbines on the roofs of 710 buildings.

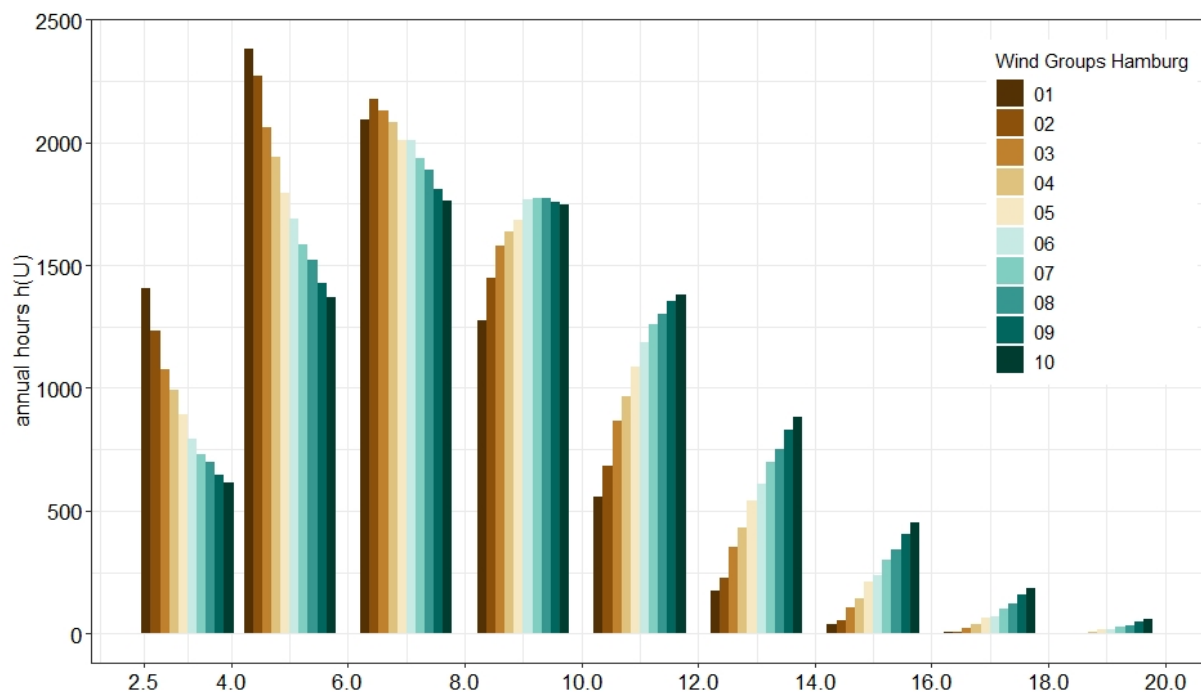


**Figure 11: Lisbon - Annual number of hours for each wind speed bin and wind group.**  
**Each wind group having unique A and k.**



Source: Own calculations and representation

**Figure 12: Hamburg - Annual number of hours for each wind speed bin and wind group.**  
**Each wind group having unique A and k**



Source: Own calculations and representation

**Table 9: Total AEPP in Lisbon generated by four turbines on 264 buildings**

Lisbon	Wind Group						
	1	2	3	4	5	6	7
<b><math>AEPP_{Lisbon,i}</math></b> (kWh)	7,898	10,591	13,053	7,817	8,812	12,292	7,628
<b><math>NB_{Lisbon,i}</math></b>	9	159	3	4	85	2	2
<b><math>NT</math></b>	4	4	4	4	4	4	4
<b><math>AEPP_{Lisbon,total,i}</math></b> (MWh)	284	6,736	157	125	2,996	98	61
<b><math>C_w</math></b>	0.88	0.88	0.88	0.88	0.88	0.88	0.88
Total buildings	264						
Total turbines	1,056						
<b><math>AEPP_{Lisbon,total}</math></b> (MWh)	<b>9,203</b>						

Source: Own calculations

**Table 10: Total AEPP in Hamburg generated by four turbines on 710 buildings**

Hamburg	Wind Group									
	1	2	3	4	5	6	7	8	9	10
<b><math>AEPP_{Hamburg,i}</math></b> (kWh)	3,501	8,385	9,745	10,591	11,011	12,229	12,292	13,644	10,456	14,767
<b><math>NB_{Hamburg,i}</math></b>	348	94	113	104	25	13	5	5	2	1
<b><math>NT</math></b>	4	4	4	4	4	4	4	4	4	4
<b><math>AEPP_{Hamburg,total}</math></b> (MWh)	4,874	3,153	4,405	4,406	1,101	636	246	273	84	59
<b><math>C_w</math></b>	0.88	0.88	0.88	0.88	0.88	0.88	0.88	0.88	0.88	0.88
Total buildings	710									
Total turbines	2,840									
<b><math>AEPP_{Hamb.,total}</math></b> (MWh)	<b>16,927</b>									

Source: Own calculations

## 5. Discussion

The total AEPP in Lisbon (9,203 MWh) corresponds to the average annual electricity consumption of approximately 7,167 residents or for 0.24 % of the total annual electricity consumption in Lisbon<sup>7</sup> (Eurostat, 2020a). This seems to be a rather modest number; however, it should be noted that only 264 buildings were included in the preliminary production potential simulation for Lisbon. Lisbon is a very flat city, with few high-rise buildings or skyscrapers, therefore its production potential might be considerably higher. Turbines could be installed on smaller buildings as well (this analysis applied a benchmark of 20 m average height). The total AEPP in Hamburg is approximately 53 % higher than in Lisbon and amounts to 16,927 MWh. On average, 0.61 % of the annual electricity consumption in Hamburg could be replaced through the turbines, which relates to the annual electricity consumption of 10,932 residents in Hamburg<sup>6</sup>. The difference in production potential between Hamburg and Lisbon arises mainly due to the fact that Hamburg has considerably more buildings that are at least 20 m in height and therefore enter the analysis. The Hamburg building dataset comprises 2.6 times more buildings than the Lisbon dataset.

The representation of the annual number of hours for each wind speed bin and wind group in Figures 11 and 12 gives insights for the choice of an adequate turbine for each city by displaying the most frequent wind speeds throughout the year. A turbine that performs optimally under these wind speeds should be chosen.

This analysis gives a good preliminary insight to the general wind energy production potential of two European coastal cities. It especially adds a new feature to the approach from Rezaeiha et al. (2020) by introducing globally and openly available reanalysis data from NASA to the framework and drawing a cross-city comparison. The framework can further be extended to make the analysis more detailed. However, increased precision of the results might decrease simplicity and applicability to global comparisons. Two improvements, however, might increase accuracy of the analysis without introducing too much complexity:

Firstly, the building dataset might be increased by including lower buildings, especially for flat cities, like Lisbon. Secondly, the AEPP can be increased by using a more efficient turbine. The choice of a sample turbine for this analysis was very much limited to the willingness of manufacturers to provide a power curve to the authors. Future co-operation with a specific manufacturer of SWTs that are applicable for roof-top installation might avoid this problem (via provision of a more detailed power curve, more technical information and real-world insights). Such a co-operation might even provide access to energy production data from that specific turbine, which could be used to examine the robustness of the framework.

---

<sup>7</sup> Consumption data as of 2018 (EUROSTAT, 2020).

## 6. Concluding remarks and policy perspectives

Urban wind farming could be an important and geographically focused part of the broader expansion of renewable energy. However, urban wind electricity generation could generate some problems if one considers roof-mounted wind turbines (other forms of urban wind farming are, however, also conceivable):

- There might be emissions from noise and flickering (i.e. the shadows from moving blades of wind energy turbines) plus sun reflection could affect neighboring buildings.
- Technical standardization of urban wind turbines seems to be rather modest, even across the EU (Cace et al., 2007)

Nonetheless, there are also crucial advantages which partly go beyond the particular investment case for urban wind farming. The main advantages as emphasized by Cace et al. (2007) can be summarized here (with an additional argument in the end):

- *“CO<sub>2</sub> savings;*
- *Green electricity generation;*
- *Meeting the requirements regarding energy saving and renewable energy appliances...;*
- *Preventing energy transport losses from large power plants to the consumer;*
- *Stimulate change of attitude: individual energy producers are typically more energy efficiency aware;*
- *Saving of fossil fuel resources;*
- *A visible “green” image for marketing purposes and emphasis on socially involved entrepreneurship;*
- *Role model function: a government organization leads by example to encourage businesses;*
- *Savings on energy costs;*
- *Less concerns regarding rising energy prices;*
- *Less dependency on energy utility companies;*
- *Development of export product”*

The rise of CO<sub>2</sub> emission certificate prices in Europe and in other countries where the energy sector (and industry – as in the EU) is subject to an Emission Trading System will stimulate substitution in favor of renewable energy; and here, wind energy, including urban wind farming, has a massive medium-term potential.

Technological development of small wind turbines for the urban environment is ongoing, especially regarding the improvement of HAWTs for urban usage.

One should not conclude that only those cities close to the sea will have considerable wind power. The higher the buildings in a city are, the higher should be the wind electricity potential so that some of the very big inland cities with many skyscrapers should have considerable wind farming potential. Here, broader perspectives for transatlantic EU-US co-operation as well as for EU-Japan co-operation should be developed. It is noteworthy that the Japanese region around Tokyo has applied ETS to the real estate sector and that considerable efficiency gains in energy generation and in the use of energy could be achieved (Welfens, 2019). Such gains could be enhanced by specific projects in the field of urban wind farming. One may also emphasize that broad urban investment in solar and wind power systems could help to cut grid investments considerably and this would also mean an indirect reduction of CO<sub>2</sub> emissions as less production of grid equipment will be needed.

At the same time, it should be emphasized that government regulation and architectural standards for office buildings, factories, businesses and private homes should formulate adequate quality requirements for both physical real estate as well as the quality of the wind electricity generating equipment. As regards standardization, transatlantic or global standardization schemes – largely organized by industry itself (but with some government oversight) – should be considered. One particular long run issue concerns architectural guidelines and standards in the field of city planning. Architectural aspects matter to the extent that urban planning thus far has not considered systematically the opportunities to create favorable conditions for urban wind-farming through an adequate mix of high-rise and smaller buildings.

As regards the regulation of equipment for urban wind farming (HAWT, VAWT, as well as other types of wind turbines), it would be useful to have an EU framework regulation so that competition in the EU single market will have strong effects on efficiency gains and innovation dynamics, respectively. Without minimum standardization at the EU level, it will be rather difficult to exploit economies of scale and to make the urban wind farming technology a strong export field of the EU. Many EU countries require an energy building passport for real estate to be sold in the market. At least for company buildings/commercial real estate, should one consider that the relevant information would include a basic calculation for solar and wind equipment for the respective building so that prices in the housing market would adequately reflect wind farming and solar farming opportunities. The joint ownership of houses could also be a crucial field of basic regulation – preferably at the national or regional level – since without regulation, the cost of achieving consensus in a multi-party housing unit might be prohibitively high. These regulatory and policy aspects are likely to be relevant in all OECD countries and in the South of the world economy as well. As soon as a more climate-friendly set of architectural standards and construction requirements in cities consider the potential of urban wind farming, there will be tailwinds for SWTs. Global economies of scale could also be considerable once a major international network of cities with considerable wind farming activities has been created. One should not overlook that part of the SWT benefit for the climate and the user, respectively, is not only linked to wind energy harvesting but to avoiding grid investment. Urban cooperatives for wind farming could also become a new field for cooperative projects. If one could reinforce international political cooperation among cities, then best practice diffusion could benefit. Once a kind of urban wind farming standard has been

established, policy makers might want to consider what measures will allow to achieve a quintupling of urban wind farming within a decade. Additional wind energy harvesting could be achieved if certain locations in windy cities would be opened up for more wind farming or combinations of wind farming and solar electricity generation.

Intelligent urban renewable energy policy should include broad common EU standards not just for wind farming but also common standards for passive energy homes; here, Austrian firms are leading in the world (Dachs and Budde, 2020), but it is hardly possible to sell such advanced houses to other EU countries. If the task of achieving climate neutrality is taken seriously in the EU, one should carefully consider the broader issues relevant for achieving climate neutrality via a modernized energy sector and related energy-generating equipment. It will depend on the European Commission and the respective Council presidency's initiative as to what extent innovative approaches in this field and in particular also in urban wind farming will be promoted in the European Union. If the EU would be a leader in urban wind farming, the European Commission should consider making this an element of its international climate protection policy.

In many countries the critical mix – beyond hydro power – will be a mix of solar energy and wind energy. As regards urban power generation, there could be a mix of wind farming and solar power where local wind and solar conditions will critically affect the preferred mix. Government promotion of certain forms of renewable energy could also play a particular role. As regards urban wind farming, government regulation – both national, regional and local regulation – will affect wind farming.

Urban wind farming has considerable long-term potential to contribute towards achieving climate neutrality in many cities of the world economy. There could be a noticeable quantitative electricity supply effect as well as an improvement of energy security via more local electricity production so that urban wind farming can contribute to the resilience of the overall energy system. Installing SWTs on roofs requires to renounce the option of a pyramid-like top of skyscrapers, but such requirement does not stand for a crucial additional cost of construction. Our analysis with a focus only on a rather limited number of houses and roofs, respectively, of two major cities could easily be extended to a larger number of cities worldwide. It would be quite useful to create an international network of wind farming cities in the global economy.

Finally, new projects of urban wind farming could become a crucial field of World Bank activities as well as attract financing from the Asian Development Bank, the European Bank for Reconstruction and Development (EBRD) and other regional development banks. The topic of urban wind farming should thus be included on the agenda of the G20 meetings of environmental ministers in the future so that investors in this technology can anticipate a broader adequate international framework and global market expansion in the future. There could be a noticeable quantitative electricity supply effect as well as an improvement of energy security via more local electricity production so that urban wind farming can contribute to the resilience of the overall energy system. Installing SWTs on roofs requires to renounce the option of constructing pyramid-like tops for skyscrapers, but such a requirement does not stand for a critical cost of construction. Our analysis, with a focus only on a rather limited number of houses and roofs, respectively, of two major cities, could easily be extended to a larger number of cities worldwide.

## Bibliography

- Aeolos Windenergie GmbH, *3kW Windkraftanlagen*, 2020. <https://www.windturbinestar.com/Produkte-3kW-Windkraftanlagen.html>. Accessed December 18, 2020.
- Amended proposal for a regulation of the European Parliament and the Council establishing the Just Transition Fund*. 28.05.2020, 2020a.
- Battisti, L., Benini, E., Brighenti, A., Dell'Anna, S., and Raciti Castelli, M., 'Small wind turbine effectiveness in the urban environment', *Renewable Energy*, Vol. 129, 2018.
- Bayeul-Lainé, A.-C., Simonet, S., and Bois, G. (eds.), *VAWT with controlled blades: influence of wake of one turbine on power coefficient on the next turbine*, 2013.
- Bonczak, B., and Kontokosta, C. E., 'Large-scale parameterization of 3D building morphology in complex urban landscapes using aerial LiDAR and city administrative data', *Computers, Environment and Urban Systems*, Vol. 73, 2019.
- BWE, *Qualitätssicherung im Sektor der Kleinwindenergieanlagen. Bildung von Kategorien / Anforderungen an technische Angaben*, 2011.
- , *Vertikalachser*, 2020. <https://www.windenergie.de/themen/anlagentechnik/funktionsweise/vertikalachser/>. Accessed November 17, 2020.
- Cace, J., Ter Horst, E., Syngellakis, K., Niel, M., Clement, P., Heppener, R., and Peirano, E., *Urban wind turbines. Guidelines for small wind turbines in the built environment*, 2007.
- Dachs, B., and Budde, B., 'Fallstudie Nachhaltiges Bauen und Lead Markets in Österreich', *Welfens, Paul J. J. EU-Strukturwandel, Leitmärkte und Techno-Globalisierung*, 2020.
- Di Sabatino, S., Solazzo, E., Paradisi, P., and Britter, R., 'A Simple Model for Spatially-averaged Wind Profiles Within and Above an Urban Canopy', *Boundary-Layer Meteorology*, Vol. 127, No. 1, 2008.
- EHS Yale, *Yale Environmental Health & Safety. Noise and Hearing Conservation, Decibel level comparison chart*, 2020. <https://ehs.yale.edu/sites/default/files/files/decibel-level-chart.pdf>. Accessed December 10, 2020.
- Elnaggar, M., Edwan, E., and Ritter, M., 'Wind Energy Potential of Gaza Using Small Wind Turbines: A Feasibility Study', *Energies*, Vol. 10, No. 8, 2017.
- Elshazly, E., Eltayeb, N., Abdel Fatah, A. A., and El-Sayed, T. A., 'Experimental and computational investigation of energy ball wind turbine aerodynamic performance', *Advances in Mechanical Engineering*, Vol. 11, No. 10, 2019.

- Emporis, *Emporis - Buildings*, 2020. <https://www.emporis.com/buildings>. Accessed November 13, 2020.
- European Commission, *Wind turbine for city rooftops. An EU-funded initiative has developed a wind turbine capable of exploiting the low-velocity turbulent wind conditions found in urban environments*, 2020b. <https://cordis.europa.eu/article/id/244881-wind-turbine-for-city-rooftops>. Accessed November 17, 2020.
- Eurostat, *Energy consumption in households: data 2010-2018. ENERGY\_ESH\_A, 2018*, 2020a. <https://ec.europa.eu/eurostat/web/energy/data>. Accessed December 11, 2020.
- , *Shedding light on energy on the EU. A Guided Tour of Energy Statistics*, 2020b. <https://ec.europa.eu/eurostat/cache/infographs/energy/index.html>. Accessed October 21, 2020.
- Fazlizan, A., Muzammil, W. K., Ismail, M. A., Ramlee, M. F., and Ibrahim, A., ‘Skewed wind flows energy exploitatoin in built environment’, *Alam Cipta*, 2019.
- George Mason University, <http://colaweb.gmu.edu/dev/clim301/lectures/wind/wind-uv>. *Department of Atmospheric, Oceanic, and Earth Sciences*, 2014. <http://colaweb.gmu.edu/dev/clim301/lectures/wind/wind-uv>. Accessed November 13, 2020.
- GES DISC, *MERRA-2 tavg1\_2d\_slv\_Nx: 2d,1-Hourly,Time-Averaged,Single-Level,Assimilation,Single-Level Diagnostics V5.12.4 (M2T1NXSLV 5.12.4)*, 2020. [https://disc.gsfc.nasa.gov/datasets/M2T1NXSLV\\_5.12.4/summary](https://disc.gsfc.nasa.gov/datasets/M2T1NXSLV_5.12.4/summary). Accessed September 18, 2020.
- Global Modeling And Assimilation Office, and Pawson, S., *MERRA-2 tavg1\_2d\_slv\_Nx: 2d,1-Hourly,Time-Averaged,Single-Level,Assimilation,Single-Level Diagnostics V5.12.4*, NASA Goddard Earth Sciences Data and Information Services Center, 2015.
- Global Wind Atlas, *Figure 1: Mean wind speeds at 100m from MERRA reanalysis. Period 1979- 2013.*, 2018. <http://science.globalwindatlas.info/datasets.html>. Accessed December 16, 2020.
- GPS Geoplaner, *GeoConverter | Routenplaner online*, 2020. <https://www.geoplaner.de/>. Accessed December 21, 2020.
- Gualtieri, G., and Secci, S., ‘Comparing methods to calculate atmospheric stability-dependent wind speed profiles: A case study on coastal location’, *Renewable Energy*, Vol. 36, No. 8, 2011.



- , ‘Methods to extrapolate wind resource to the turbine hub height based on power law: A 1-h wind speed vs. Weibull distribution extrapolation comparison’, *Renewable Energy*, Vol. 43, 2012.
- IEA, *Offshore Wind Outlook 2019*, 2019.
- IRENA, *Renewable Energy Now Accounts for a Third of Global Power Capacity*, 2019. <https://www.irena.org/newsroom/pressreleases/2019/Apr/Renewable-Energy-Now-Accounts-for-a-Third-of-Global-Power-Capacity>. Accessed October 21, 2020.
- . IRENA, *Renewable Energy Statistics 2020*, 2020a.
- . IRENA, *Renewable Power Generation Costs in 2019*, 2020b.
- Johari, M. K., Jalil, M. A. A., and Shariff, M. F. M., ‘Comparison of horizontal axis wind turbine (HAWT) and vertical axis wind turbine (VAWT)’, *International Journal of Engineering & Technology*, Vol. 7, No. 4.13, 2018.
- Jüttemann, P., *Vertikale Windkraftanlagen | Markt & Technik*, 2020. <https://www.kleinwindkraftanlagen.com/technik/vertikale-windkraftanlagen/>. Accessed November 17, 2020.
- Kassem, Zoubi, A., and Gökçekuş, ‘The Possibility of Generating Electricity Using Small-Scale Wind Turbines and Solar Photovoltaic Systems for Households in Northern Cyprus: A Comparative Study’, *Environments*, Vol. 6, No. 4, 2019.
- KC, A., Whale, J., and Urmee, T., ‘Urban wind conditions and small wind turbines in the built environment: A review’, *Renewable Energy*, Vol. 131, 2019.
- Kent, C. W., Grimmond, S., Gatey, D., and Hirano, K., ‘Urban morphology parameters from global digital elevation models: Implications for aerodynamic roughness and for wind-speed estimation’, *Remote Sensing of Environment*, Vol. 221, 2019.
- Kumar, R., Raahemifar, K., and Fung, A. S., ‘A critical review of vertical axis wind turbines for urban applications’, *Renewable and Sustainable Energy Reviews*, Vol. 89, 2018.
- Manwell, J. F., McGowan, J. G., and Rogers, A. L., *Wind energy explained. Theory, design and application*, Wiley, 2011.
- Mithraratne, N., ‘Roof-top wind turbines for microgeneration in urban houses in New Zealand’, *Energy and Buildings*, Vol. 41, No. 10, 2009.
- NASA, *MERRA-2*, 2019. <https://gmao.gsfc.nasa.gov/reanalysis/MERRA-2/>. Accessed December 16, 2020.
- OpenStreetMap, *Urheberrecht und Lizenz*, 2020. <https://www.openstreetmap.org/copyright>. Accessed December 21, 2020.
- Paris Agreement*, 2015.

- Rezaeiha, A., Montazeri, H., and Blocken, B., 'A framework for preliminary large-scale urban wind energy potential assessment: Roof-mounted wind turbines', *Energy Conversion and Management*, Vol. 214, 2020.
- Ricciardelli, F., Pirozzi, S., and Mandara, A. (eds.), *Comparison of Wind LiDAR Measurements with Predictions from Airport Data*, 2017.
- Ritter, M., Shen, Z., López Cabrera, B., Odening, M., and Deckert, L., 'Designing an index for assessing wind energy potential', *Renewable Energy*, Vol. 83, 2015.
- Rodriguez-Hernandez, O., Martinez, M., Lopez-Villalobos, C., Garcia, H., and Campos-Amezcu, R., 'Techno-Economic Feasibility Study of Small Wind Turbines in the Valley of Mexico Metropolitan Area', *Energies*, Vol. 12, No. 5, 2019.
- Ruiz, P., Nijs, W., Tarvydas, D., Sgobbi, A., Zucker, A., Pilli, R., Jonsson, R., Camia, A., Thiel, C., Hoyer-Klick, C., Dalla Longa, F., Kober, T., Badger, J., Volker, P., Elbersen, B. S., Brosowski, A., and Thrän, D., 'ENSPRESO - an open, EU-28 wide, transparent and coherent database of wind, solar and biomass energy potentials', *Energy Strategy Reviews*, Vol. 26, 2019.
- Sahebzadeh, S., Rezaeiha, A., and Montazeri, H., 'Impact of relative spacing of two adjacent vertical axis wind turbines on their aerodynamics', *Energy Conversion and Management*, Vol. 1618, 2020.
- Simões, T., Costa, P., and Estanqueiro, A., *A first methodology for wind energy resource assessment in urbanised areas in Portugal*, 2009.
- Simões, T., and Estanqueiro, A., 'A new methodology for urban wind resource assessment', *Renewable Energy*, Vol. 89, 2016.
- The European Green Deal*, 2019.
- Toja-Silva, F., Colmenar-Santos, A., and Castro-Gil, M., 'Urban wind energy exploitation systems: Behaviour under multidirectional flow conditions—Opportunities and challenges', *Renewable and Sustainable Energy Reviews*, Vol. 24, 2013.
- Toja-Silva, F., Kono, T., Peralta, C., Lopez-Garcia, O., and Chen, J., 'A review of computational fluid dynamics (CFD) simulations of the wind flow around buildings for urban wind energy exploitation', *Journal of Wind Engineering and Industrial Aerodynamics*, Vol. 180, 2018.
- Tummala, A., Velamati, R. K., Sinha, D. K., Indraja, V., and Krishna, V. H., 'A review on small scale wind turbines', *Renewable and Sustainable Energy Reviews*, Vol. 56, 2016.

- von der Grün, Zamre, Chen, Lutz, Voß, and Krämer, ‘Numerical study and LiDAR based validation of the wind field in urban sites’, *Journal of Physics: Conference Series*, Vol. 1618, 2020.
- Welfens, P. J. J., *Klimaschutzpolitik — das Ende der Komfortzone. Neue wirtschaftliche und internationale Perspektiven zur Klimadebatte*, Springer Fachmedien Wiesbaden, 2019.
- Wilke, A., Shen, Z., and Ritter, M., ‘How Much Can Small-Scale Wind Energy Production Contribute to Energy Supply in Cities? A Case Study of Berlin’, *SSRN Electronic Journal*, 2020.
- WINDEXchange, *A Smallwind Guidebook*, 2020. <https://windexchange.energy.gov/small-wind-guidebook.pdf>. Accessed October 26, 2020.
- WMO, *Guide to meteorological instruments and methods of observation*, 2008.

## Appendix: Aeolos-V 3kW Vertical Wind Turbine Brochure



### ***Vertical Wind Turbine Brochure***

*Aeolos wind turbine  
SINCE 1986*



***Aeolos-V 3kW***

AEOLOS



**Aeolos -V Series**  
windturbinestar.com

*Aeolos wind turbine*  
**SINCE 1986**



#### Specification

Generator Type: Three Phase Permanent Magnet  
Rotor Height: 3.6 m (11.81 ft)  
Rotor Width: 3 m (9.8 ft)  
Turbine Weight: 106 kg (233.7 lbs)  
Blade Material: Aluminum Alloy  
Blade Quantity: 3 pcs  
Working Temperature: -20 °C to 50 °C  
Design Lifetime: 20 years

#### Performance

Rated Power: 3000 W  
Max Output Power: 3800 W  
Cut In Wind Speed: 2.5 m/s (5.6 mph)  
Rated Wind Speed: 11 m/s (24.6 mph)  
Survival Wind Speed: 52.5 m/s (117.4 mph)  
Generator Efficiency: 96%  
Noise Level: < 45 dB(A)  
Warranty: 5 years

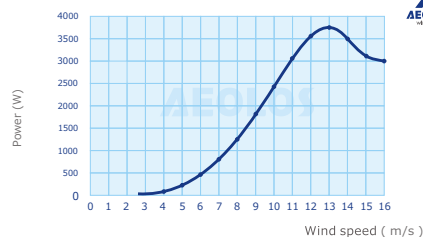
#### Safety

Blades RPM Limitation: 320 RPM  
PWM Dump Load: 5kW Box  
Mechanical Brake: Auto/Manual

#### Optional

Remote Monitoring System ( Internet/Wireless)  
Auto Hydraulic Brake System ( Unattended Site )  
Off Grid : 48/96 V  
Grid Tied : 300 V

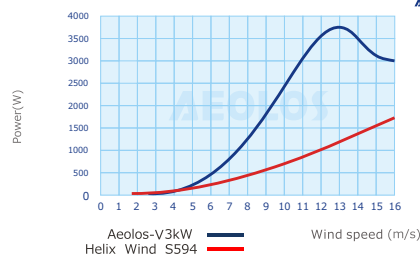
Aeolos-V 3kW Power Curve



Aeolos-V 3kW Wind Turbine Annual Energy Output

Wind Speed(m/s)	Annual Energy Output (KWh)	Wind Speed(m/s)	Annual Energy Output (KWh)
3 m/s	1256 kWh	8 m/s	13176 kWh
4 m/s	2825 kWh	9 m/s	15271 kWh
5 m/s	5156 kWh	10 m/s	16990 kWh
6 m/s	7929 kWh	11 m/s	18387 kWh
7 m/s	10697 kWh	12 m/s	19520 kWh

Aeolos-v 3kW PowerCurve VS HelixS594



**5 YEAR WARRANTY**



Aeolos Wind Energy, Ltd (UK)  
27 Old Gloucester Street, London WC1N 3AX  
United Kingdom  
Tel:+44 208 242 1884  
E-mail:sales@windturbinestar.com





**Aeolos wind turbine  
SINCE 1986**



## **Why Choose Aeolos-V 3kW Wind Turbine?**

### **Triple Safety Protection**

**Special Blade Design:** Aeolos blades use the special aerodynamic design which limits the max rotating speed to 320 rpm even the wind speed is 30m/s or 40m/s. It is safer and more reliable than traditional vertical axis wind turbine.

**PWM Dump Load:** Aeolos-V 3kW wind turbine has the 5kW dump load box with PWM loading function. This will consume the over power output and control the voltage in strong wind speed.

**Mechanical Brake:** The manual mechanical brake can stop the wind turbine for maintenance or typhoon coming. We have the auto hydraulic brake system for remote installation site without people checking as optional function.



### **High Efficiency**

**Low Cut-in Wind Speed:** Aeolos-V 3kW could start up with 1.5m/s wind speed and has the power output in 2.5m/s to inverter. This is more efficient than the vertical wind turbines with a 3.5m/s or even 4.5m/s cut in wind speed.

**More Annual Output:** According to EN61400-2(IEC 61400-2) standard, Aeolos-V 3kW annual output is 5156 kWh at 5m/s wind speed. The annual output at 10m/s is 16990 kWh.

**MPPT Charger for Off Grid:** Aeolos-V 3kW use 48V/96V MPPT charging controller to increase the charging efficiency to 94%. It can charge the battery bank when wind speed is above 3.0m/s.



**5 YEAR WARRANTY**



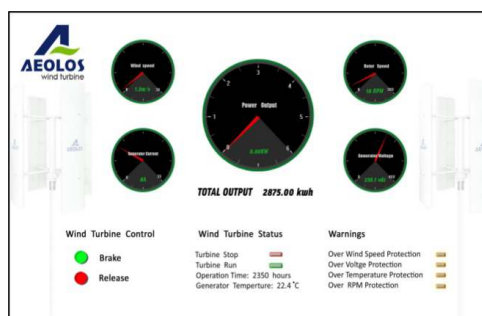


**Aeolos wind turbine  
SINCE 1986**



### Intelligence Control

Remote Monitoring System: Customer can remote monitor the wind turbine operation, wind speed and power output in office, home, airport and anywhere through the internet.

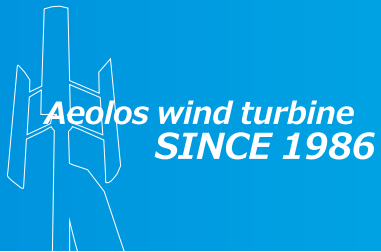


Auto Hydraulic Brake System: It is suitable for the remote installation sites, like the island, telecommunication tower station which does not have people checking and monitoring. This system can auto stop the wind turbine in over voltage, over wind speed, generator over temperature and all any other faults. It can auto release the wind turbine to run after the abnormal warnings.



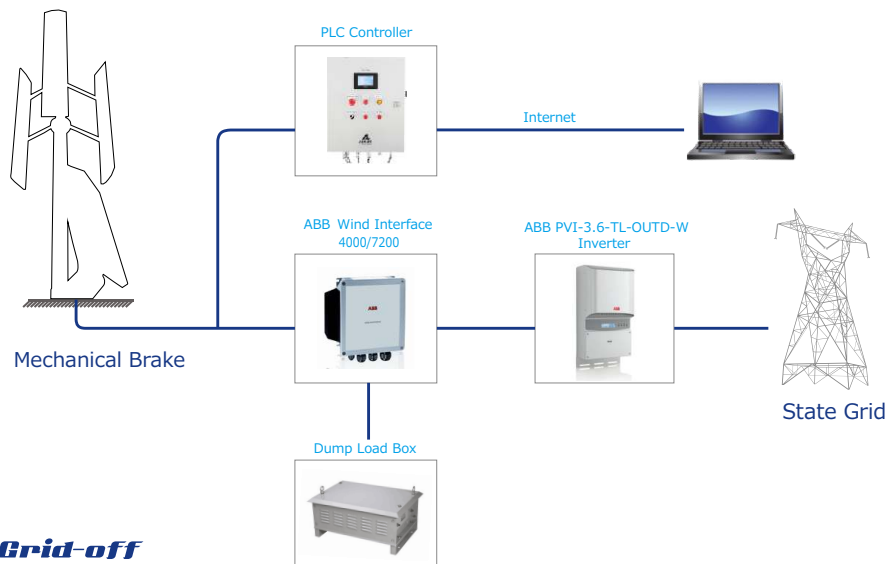
**5 YEAR WARRANTY**



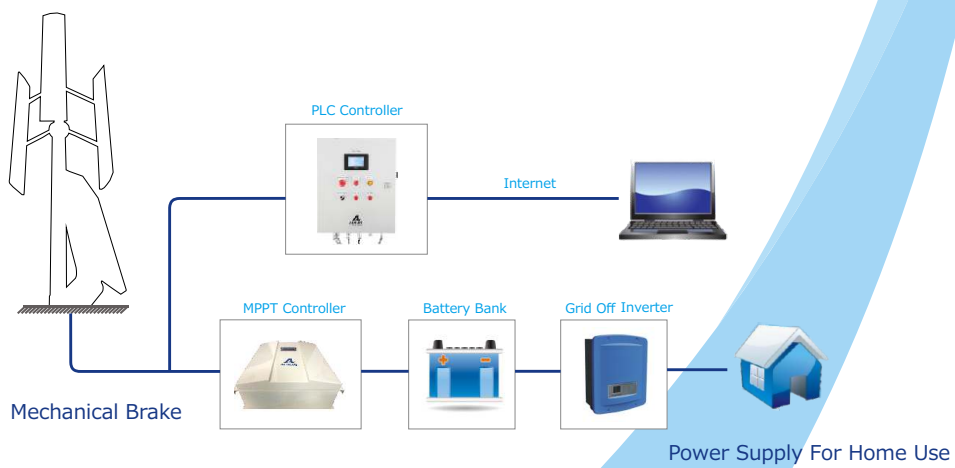


**Wiring Diagram**

**Grid-on**



**Grid-off**



**5 YEAR WARRANTY**





## EIIW Diskussionsbeiträge

## EIIW Discussion Papers



ISSN 1430-5445:

Die Zusammenfassungen der Beiträge finden Sie im Internet unter:

The abstracts of the publications can be found in the internet under:

<https://eiiw.wiwi.uni-wuppertal.de/>

- No. 173 **Welfens P.J.J.; Perret K.J.:** Structural Change, Specialization and Growth in EU 25, January 2010
- No. 174 **Welfens P.J.J.; Perret K.J.; Erdem D.:** Global Economic Sustainability Indicator: Analysis and Policy Options for the Copenhagen Process, February 2010
- No. 175 **Welfens, P.J.J.:** Rating, Kapitalmarktsignale und Risikomanagement: Reformansätze nach der Transatlantischen Bankenkrise, Februar 2010
- No. 176 **Mahmutovic, Z.:** Patendatenbank: Implementierung und Nutzung, Juli 2010
- No. 177 **Welfens, P.J.J.:** Toward a New Concept of Universal Services: The Role of Digital Mobile Services and Network Neutrality, November 2010
- No. 178 **Perret J.K.:** A Core-Periphery Pattern in Russia – Twin Peaks or a Rat’s Tail, December 2010
- No. 179 **Welfens P.J.J.:** New Open Economy Policy Perspectives: Modified Golden Rule and Hybrid Welfare, December 2010
- No. 180 **Welfens P.J.J.:** European and Global Reform Requirements for Overcoming the Banking Crisis, December 2010
- No. 181 **Szanyi, M.:** Industrial Clusters: Concepts and Empirical Evidence from East-Central Europe, December 2010
- No. 182 **Szalavetz, A.:** The Hungarian automotive sector – a comparative CEE perspective with special emphasis on structural change, December 2010

- No. 183 **Welfens, P.J.J.; Perret, K.J.; Erdem, D.:** The Hungarian ICT sector – a comparative CEE perspective with special emphasis on structural change, December 2010
- No. 184 **Lengyel, B.:** Regional clustering tendencies of the Hungarian automotive and ICT industries in the first half of the 2000's, December 2010
- No. 185 **Schröder, C.:** Regionale und unternehmensspezifische Faktoren einer hohen Wachstumsdynamik von IKT Unternehmen in Deutschland; Dezember 2010
- No. 186 **Emons, O.:** Innovation and Specialization Dynamics in the European Automotive Sector: Comparative Analysis of Cooperation & Application Network, October 2010
- No. 187 **Welfens, P.J.J.:** The Twin Crisis: From the Transatlantic Banking Crisis to the Euro Crisis? January 2011
- No. 188 **Welfens, P.J.J.:** Green ICT Dynamics: Key Issues and Findings for Germany, March 2012
- No. 189 **Erdem, D.:** Foreign Direct Investments, Energy Efficiency and Innovation Dynamics, July 2011
- No. 190 **Welfens, P.J.J.:** Atomstromkosten und -risiken: Haftpflichtfragen und Optionen rationaler Wirtschaftspolitik, Mai 2011
- No. 191 **Welfens, P.J.J.:** Towards a Euro Fiscal Union: Reinforced Fiscal and Macroeconomic Coordination and Surveillance is Not Enough, January 2012
- No. 192 **Irawan, T.:** ICT and economic development: Conclusion from IO Analysis for Selected ASEAN Member States, November 2013
- No. 193 **Welfens, P.J.J.; Perret, J.:** Information & Communication Technology and True Real GDP: Economic Analysis and Findings for Selected Countries, February 2014
- No. 194 **Schröder, C.:** Dynamics of ICT Cooperation Networks in Selected German ICT Clusters, August 2013
- No. 195 **Welfens, P.J.J.; Jungmittag, A.:** Telecommunications Dynamics, Output and Employment, September 2013
- No. 196 **Feiguine, G.; Solojova, J.:** ICT Investment and Internationalization of the Russian Economy, September 2013
- No. 197 **Kubielas, S.; Olender-Skorek, M.:** ICT Modernization in Central and Eastern Europe, May 2014 Trade and Foreign Direct Investment New Theoretical Approach and Empirical Findings for US Exports & European Exports
- No. 198 **Feiguine, G.; Solovjova, J.:** Significance of Foreign Direct Investment for the Development of Russian ICT sector, May 2014

- No. 199 **Feiguine, G.; Solovjova, J.:** ICT Modernization and Globalization: Russian Perspectives, February 2012
- No. 200 **Syraya, O.:** Mobile Telecommunications and Digital Innovations, May 2014
- No. 201 **Tan, A.:** Harnessing the Power of ICT and Innovation Case Study Singapore, March 2014
- No. 202 **Udalov, V.:** Political-Economic Aspects of Renewable Energy: Voting on the Level of Renewable Energy Support, November 2014
- No. 203 **Welfens, P.J.J.:** Overcoming the EU Crisis and Prospects for a Political Union, March 2014
- No. 204 **Welfens, P.J.J.; Irawan, T.:** Trade and Foreign Direct Investment: New Theoretical Approach and Empirical Findings for US Exports and European Exports, November 2014
- No. 205 **Welfens, P.J.J.:** Competition in Telecommunications and Internet Services: Problems with Asymmetric Regulations, December 2014
- No. 206 **Welfens, P.J.J.:** Innovation, Inequality and a Golden Rule for Growth in an Economy with Cobb-Douglas Function and an R&D Sector
- No. 207 **Jens K. Perret.:** Comments on the Impact of Knowledge on Economic Growth across the Regions of the Russian Federation
- No. 208 **Welfens, P.J.J.; Irawan T.:** European Innovations Dynamics and US Economic Impact: Theory and Empirical Analysis, June 2015
- No. 209 **Welfens, P.J.J.:** Transatlantisches Freihandelsabkommen EU-USA: Befunde zu den TTIP-Vorteilen und Anmerkungen zur TTIP-Debatte, Juni 2015
- No. 210 **Welfens, P.J.J.:** Overcoming the Euro Crisis and Prospects for a Political Union, July 2015
- No. 211 **Welfens, P.J.J.:** Schumpeterian Macroeconomic Production Function for Open Economies: A New Endogenous Knowledge and Output Analysis, January 2016
- No. 212 **Jungmittag, A.; Welfens, P.J.J.:** Beyond EU-US Trade Dynamics: TTIP Effects Related to Foreign Direct Investment and Innovation, February 2016
- No. 213 **Welfens, P.J.J.:** Misleading TTIP analysis in the 6th/7th May 2016 issue of DER SPIEGEL, May 2016
- No. 214 **Welfens, P.J.J.:** TTIP-Fehlanalyse im SPIEGEL Heft 6. Mai 2016, Mai 2016
- No. 215 **Welfens, P.J.J.; Irawan, T.; Perret, J.K.:** True Investment-GDP Ratio in a World Economy with Investment in Information & Communication Technology, June 2016
- No. 216 **Welfens, P.J.J.:** EU-Osterweiterung: Anpassungsprozesse, Binnenmarktdynamik und Euro-Perspektiven, August 2016

- No. 217 **Perret, J.K.:** A Spatial Knowledge Production Function Approach for the Regions of the Russian Federation, June 2016
- No. 218 **Korus, A.:** Currency Overvaluation and R&D Spending, September 2016
- No. 219 **Welfens, P.J.J.:** Cameron's Information Disaster in the Referendum of 2016: An Exit from Brexit? September 2016
- No. 220 **Welfens, P.J.J.:** Qualitätswettbewerb, Produktinnovationen und Schumpetersche Prozesse in internationalen Märkten, October 2016
- No. 221 **Jungmittag, A.:** Techno-Globalisierung, October 2016
- No. 222 **Dachs, B.:** Techno-Globalisierung als Motor des Aufholprozesses im österreichischen Innovationssystem, October 2016
- No. 223 **Perret, J.K.:** Strukturwandel in der Europäischen Union am Beispiel ausgewählter Leitmärkte mit besonderem Bezug auf die Innovationstätigkeit der Mitgliedsländer, October 2016
- No. 224 **Irawan, T.; Welfens, P.J.J.:** ICT Dynamics and Regional Trade Bias in Asia: Theory and Empirical Aspects, October 2016
- No. 225 **Korus, A.:** Erneuerbare Energien und Leitmärkte in der EU und Deutschland, October 2016
- No. 226 **Dachs, B.; Budde, B.:** Fallstudie Nachhaltiges Bauen und Lead Markets in Österreich, October 2016
- No. 227 **Welfens, P.J.J.:** eHealth: Grundlagen der Digitalen Gesundheitswirtschaft und Leitmarktperspektiven, October 2016
- No. 228 **Korus, A.:** Innovationsorientierte öffentliche Beschaffung und Leitmärkte: Politische Initiativen in der EU, October 2016
- No. 230 **Nan, Yu:** Innovation of renewable energy generation technologies at a regional level in China: A study based on patent data analysis, December 2016
- No. 231 **Welfens, P.J.J.; Debes, C.:** Globale Nachhaltigkeit 2017: Ergebnisse zum EIIW-vita Nachhaltigkeitsindikator, März 2018
- No. 232 **Welfens, P.J.J.:** Negative Welfare Effects from Enhanced International M&As in the Post-BREXIT-Referendum UK, April 2017
- No. 233 **Udalov, V.; Welfens, P.J.J.:** Digital and Competing Information Sources: Impact on Environmental Concern und Prospects for Cooperation, April 2017
- No. 234 **Welfens, P.J.J.:** The True Cost of BREXIT for the UK: A Research Note, October 2017
- No. 235 **Welfens, P.J.J.; Hanrahan, D.:** BREXIT: Key Analytical Issues and Insights from Revised Economic Forecasts, January 2018

- No. 236 **Welfens, P.J.J.:** Techno-Globalisierung, Leitmärkte und Strukturwandel in wirtschaftspolitischer Sicht, August 2017
- No. 238 **Welfens, P.J.J.:** Foreign Financial Deregulation under Flexible and Fixed Exchange Rates, June 2017
- No. 239 **Welfens, P.J.J.; Kadiric, S.:** Neuere Finanzmarktaspekte von Bankenkrise, QE-Politik und EU-Bankenaufsicht, July 2017
- No. 240 **Welfens, P.J.J.; Hanrahan, D.:** The BREXIT Dynamics: British and EU27 Challenges after the EU Referendum, May 2017
- No. 241 **Welfens, P.J.J.; Baier, F.:** BREXIT and FDI: Key Issues and New Empirical Findings, January 2018
- No. 242 **Welfens, P.J.J.:** International Risk Management in BREXIT and Policy Options, March 2018
- No. 243 **Korus, A.; Celebi, K.:** The Impact of Brexit on the British Pound/Euro Exchange rate The Impact of Brexit on the British Pound/Euro Exchange rate, April 2018
- No. 244 **Welfens, P.J.J.; Yushkova, E.:** IKT-Sektor in China und Wirtschaftsbeziehungen zu Deutschland, April 2018
- No. 245 **Udalov, V.:** Analysis of Individual Renewable Energy Support: An Enhanced Model, June 2018
- No. 246 **Welfens, P.J.J.:** Lack of International Risk Management in BREXIT? July 18 2018
- No. 247 **Xiong, T.; Welfens, P.J.J.:** The Effects of Foreign Direct Investment on Regional Innovation Capacity in China, June 2018
- No. 248 **Welfens, P.J.J.:** New Marshall-Lerner Conditions for an Economy with Outward and Two-Way Foreign Direct Investment, July 2018, Updated February 2019
- No. 249 **Welfens, P.J.J.; Xiong, T.:** BREXIT Perspectives: Financial Market Dynamics, Welfare Aspects and Problems from Slower Growth, September 2018
- No. 250 **Welfens, P.J.J.; Udalov, V.:** International Inequality Dynamics: Issues and Evidence of a Redistribution Kuznets Curve, September 2018
- No. 251 **Kadiric, S.; Korus, A.:** The Effects of Brexit on Corporate Yield Spreads: Evidence from UK and Eurozone Corporate Bond Markets, September 2018
- No. 252 **Welfens, P.J.J.:** Import Tariffs, Foreign Direct Investment and Innovation: A New View on Growth and Protectionism, December 2018
- No. 253 **Welfens, P.J.J.:** Explaining Trumpism as a Structural US Problem: New Insights and Transatlantic Plus Global Economic Perspectives, October 2018

- No. 254 **Baier, F.J.; Welfens, P.J.J.:** The UK's Banking FDI Flows and Total British FDI: A Dynamic BREXIT Analysis, November 2018
- No. 255 **Welfens, P.J.J.; Yu, N.; Hanrahan, D.; Schmuelling, B; Fechtner, H.:** Electrical Bus Mobility in the EU and China: Technological, Ecological and Economic Policy Perspectives, December 2018
- No. 256 **Welfens, P.J.J.; Baier, F.; Kadiric, S.; Korus, A.; Xiong, T.:** EU28 Capital Market Perspectives of a Hard BREXIT: Theory, Empirical Findings and Policy Options, March 2019
- No. 257 **Welfens, P.J.J.:** Council of Economic Advisers: Biased Per Capita Consumption Comparison of the US with Europe, March 2019 (forthcoming)
- No. 258 **Welfens, P.J.J.:** Wirtschaftspolitik-Fehlorientierung des Westens nach 1989: Bankenkrise, Globalisierungs-Ordnungsdefizit und Desintegrationsdruck, April 2019
- No. 259 **Welfens, P.J.J.:** CO2-Steuer, Zertifikate-Handel und Innovationsförderung als Klimapolitik-Instrumente, June 2019
- No. 260 **Welfens, P.J.J.:** BREXIT- Wirtschaftsperspektiven für Deutschland und NRW: Mittel- und langfristige Effekte & Politikoptionen, June 2019
- No. 261 **Baier, F.J.:** Foreign Direct Investment and Tax: OECD Gravity Modelling in a World with International Financial Institutions, August 2019
- No. 262 **Welfens, P.J.J.:** Rationale Klimapolitik für das Erreichen des Ziels Klimaneutralität: NRW-Deutschland-EU-G20Plus, Oktober 2019
- No. 263 **Welfens, P.J.J.:** After Eastern German State Elections 2019: Germany Facing Serious Politico-Economic Problems, September 2019
- No. 264 **Jungmittag, A.; Welfens, Paul J.J.:** EU-US Trade Post-Trump Perspectives: TTIP Aspects Related to Foreign Direct Investment and Innovation, November 2019
- No. 265 **Welfens, P.J.J.:** Financial Markets and Oil Prices in a Schumpeterian Context of CO2-Allowance Markets, December 2019
- No. 266 **Welfens, P.J.J.; Xiong, T.:** US MNCs' Reinvested Earnings and Investment in EU Countries: New Thoughts on Feldstein-Horioka, December 2019, *forthcoming*
- No. 267 **Welfens, P.J.J.; Celebi, K.:** CO2 Allowance Price Dynamics and Stock Markets in EU Countries: Empirical Findings and Global CO2-Perspectives, January 2020
- No. 268 **Celebi, K.:** Quo Vadis, Britain? – Implications of the Brexit Process on the UK's Real Economy, January 2020
- No. 269 **Welfens, P.J.J.:** The Optimum Import Tariff in the Presence of Outward Foreign Direct Investment, January 2020

- No. 270 **Welfens, P.J.J.:** Macroeconomic Aspects of the Coronavirus Epidemic: Eurozone, EU, US and Chinese Perspectives, March 2020
- No. 271 **Kadiric, S.:** The Determinants of Sovereign Risk Premiums in the UK and the European Government Bond Market: The Impact of Brexit, March 2020
- No. 272 **Welfens, P.J.J.:** Macroeconomic and Health Care Aspects of the Coronavirus Epidemic: EU, US and Global Perspectives, April 2020
- No. 273 **Welfens, P.J.J.:** Corona World Recession and Health System Crisis: Shocks Not Understood So Far, May 2020
- No. 274 **Bretschger, L.; Grieg, E.; Welfens, P.J.J.; Xiong, T.:** Corona Fatality Development, Medical Indicators and the Environment: Empirical Evidence for OECD Countries, June 2020
- No. 275 **Welfens, P.J.J.:** Doubts on the Role of Disturbance Variance in New Keynesian Models and Suggested Refinements, October 2020
- No. 277 **Bretschger, L.; Grieg, E.; Welfens, P.J.J.; Xiong, T.:** COVID-19 Infections and Fatalities Developments: Empirical Evidence for OECD Countries and Newly Industrialized Economies, September 2020
- No. 279 **Welfens, P.J.J.:** Product Innovations, Process Innovations and Foreign Direct Investment: New Theoretical Aspects and Empirical Findings, December 2020
- No. 280 **Zander, T.:** Does corruption matter for FDI flows in the OECD? A gravity analysis, October 2020
- No. 281 **Celebi, K.; Welfens, P.J.J.:** The Economic Impact of Trump: Conclusions from an Impact Evaluation Analysis, October 2020
- No. 283 **Welfens, P.J.J.:** Optimal Inward Foreign Direct Investment Share within an International M&A Setting, November 2020
- No. 285 **Hanrahan, D.:** Tax Challenges of the Digitalized Economy, December 14<sup>th</sup> 2020
- No. 286 **Welfens, P.J.J.:** Corona-Impfpolitik-Perspektiven: Grundlagen, Probleme und Strategieoptionen, December 19<sup>th</sup> 2020 (Vorabversion)
- No. 287 **Welfens, P.J.J.; Wilke, A.:** Urban Wind Energy Production in European Cities: New Opportunities, December 21<sup>st</sup> 2020

## **Weitere Beiträge von Interesse:**

### **Titels of related interest:**

- Paul J.J. Welfens** (2019), Klimaschutzpolitik - Das Ende der Komfortzone: Neue wirtschaftliche und internationale Perspektiven zur Klimadebatte, Springer Heidelberg
- Paul J.J. Welfens** (2019), The Global Trump - Structural US Populism and Economic Conflicts with Europe and Asia, Palgrave Macmillan London
- Paul J.J. Welfens** (2018), Brexit aus Versehen: Europäische Union zwischen Desintegration und neuer EU, 2.A, Springer Heidelberg
- Paul J.J. Welfens; Samir Kadiric** (2018), Bankenaufsicht, Unkonventionelle Geldpolitik und Bankenregulierung, DeGruyter Oldenbourg
- Paul J.J. Welfens** (2017), An Accidental BREXIT: New EU and Transatlantic Economic Perspectives, Palgrave Macmillan London
- Paul J.J. Welfens** (2017), Macro Innovation Dynamics and the Golden Age, New Insights into Schumpeterian Dynamics, Inequality and Economic Growth, Springer Heidelberg
- Paul J.J. Welfens** (Nov. 2016), Brexit aus Versehen: Europäische Union zwischen Desintegration und neuer EU, Springer Heidelberg
- Paul J.J. Welfens; Jens K. Perret; Tony Irawan; Evgeniya Yushkova** (2015), Towards Global Sustainability, Springer Berlin Heidelberg
- Paul J.J. Welfens; A. Korus; T. Irawan** (2014), Transatlantisches Handels- und Investitionsabkommen: Handels-, Wachstums- und industrielle Beschäftigungsdynamik in Deutschland, den USA und Europa, Lucius & Lucius Stuttgart
- Paul J.J. Welfens** (2013), Grundlagen der Wirtschaftspolitik, 5. Auflage, Springer Berlin Heidelberg
- Paul J.J. Welfens** (2013), Social Security and Economic Globalization, Springer Berlin Heidelberg
- Paul J.J. Welfens** (2012), Clusters in Automotive and Information & Communication Technology, Springer Berlin Heidelberg
- Paul J.J. Welfens** (2011), Innovations in Macroeconomics, 3<sup>rd</sup> revised and enlarged edition, Springer Berlin Heidelberg
- Paul J.J. Welfens** (2011), Zukunftsfähige Wirtschaftspolitik für Deutschland und Europa, Springer Berlin Heidelberg
- Paul J.J. Welfens; Cillian Ryan, eds.** (2011), Financial Market Integration and Growth, Springer Berlin Heidelberg
- Raimund Bleischwitz; Paul J.J. Welfens; Zhong Xiang Zhang** (2011), International Economics of Resource Efficiency, Physica-Verlag Heidelberg
- Paul J.J. Welfens; John T. Addison** (2009), Innovation, Employment and Growth Policy Issues in the EU and the US, Springer Berlin Heidelberg
- Paul J.J. Welfens; Suthiphand Chirathivat; Franz Knipping** (2009), EU – ASEAN, Springer Berlin Heidelberg



- Paul J.J. Welfens; Ellen Walther-Klaus** (2008), Digital Excellence, Springer Berlin Heidelberg
- Huub Meijers; Bernhard Dachs; Paul J.J. Welfens** (2008), Internationalisation of European ICT Activities, Springer Berlin Heidelberg
- Richard Tilly; Paul J.J. Welfens; Michael Heise** (2007), 50 Years of EU Economic Dynamics, Springer Berlin Heidelberg
- Paul J.J. Welfens; Mathias Weske** (2007), Digital Economic Dynamics, Springer Berlin Heidelberg
- Paul J.J. Welfens; Franz Knipping; Suthiphand Chirathivat** (2006), Integration in Asia and Europe, Springer Berlin Heidelberg
- Edward M. Graham; Nina Oding; Paul J.J. Welfens** (2005), Internationalization and Economic Policy Reforms in Transition Countries, Springer Berlin Heidelberg
- Paul J.J. Welfens; Anna Wziatek-Kubiak** (2005), Structural Change and Exchange Rate Dynamics, Springer Berlin Heidelberg
- Paul J.J. Welfens; Peter Zoche; Andre Jungmittag; Bernd Beckert; Martina Joisten** (2005), Internetwirtschaft 2010, Physica-Verlag Heidelberg
- Evgeny Gavrilentov; Paul J.J. Welfens; Ralf Wiegert** (2004), Economic Opening Up and Growth in Russia, Springer Berlin Heidelberg
- John T. Addison; Paul J.J. Welfens** (2003), Labor Markets and Social Security, Springer Berlin Heidelberg
- Timothy Lane; Nina Oding; Paul J.J. Welfens** (2003), Real and Financial Economic Dynamics in Russia and Eastern Europe, Springer Berlin Heidelberg
- Claude E. Barfield; Günter S. Heiduk; Paul J.J. Welfens** (2003), Internet, Economic Growth and Globalization, Springer Berlin Heidelberg
- Thomas Gries; Andre Jungmittag; Paul J.J. Welfens** (2003), Neue Wachstums- und Innovationspolitik in Deutschland und Europa, Physica-Verlag Heidelberg
- Hermann-Josef Bunte; Paul J.J. Welfens** (2002), Wettbewerbsdynamik und Marktabgrenzung auf Telekommunikationsmärkten, Springer Berlin Heidelberg
- Paul J.J. Welfens; Ralf Wiegert** (2002), Transformationskrise und neue Wirtschaftsreformen in Russland, Physica-Verlag Heidelberg
- Paul J.J. Welfens; Andre Jungmittag** (2002), Internet, Telekomliberalisierung und Wirtschaftswachstum, Springer Berlin Heidelberg
- Paul J.J. Welfens** (2002), Interneteconomics.net, Springer Berlin Heidelberg
- David B. Audretsch; Paul J.J. Welfens** (2002), The New Economy and Economic Growth in Europe and the US, Springer Berlin Heidelberg
- Paul J.J. Welfens** (2001), European Monetary Union and Exchange Rate Dynamics, Springer Berlin Heidelberg
- Paul J.J. Welfens** (2001), Internationalization of the Economy and Environmental Policy Options, Springer Berlin Heidelberg

- Paul J.J. Welfens** (2001), *Stabilizing and Integrating the Balkans*, Springer Berlin Heidelberg
- Richard Tilly; Paul J.J. Welfens** (2000), *Economic Globalization, International Organizations and Crisis Management*, Springer Berlin Heidelberg
- Paul J.J. Welfens; Evgeny Gavrilenkov** (2000), *Restructuring, Stabilizing and Modernizing the New Russia*, Springer Berlin Heidelberg
- Paul J.J. Welfens; Klaus Gloede; Hans Gerhard Strohe; Dieter Wagner** (1999), *Systemtransformation in Deutschland und Rußland*, Physica-Verlag Heidelberg
- Paul J.J. Welfens; Cornelius Graack** (1999), *Technologieorientierte Unternehmensgründungen und Mittelstandspolitik in Europa*, Physica-Verlag Heidelberg
- Paul J.J. Welfens; George Yarrow; Ruslan Grinberg; Cornelius Graack** (1999), *Towards Competition in Network Industries*, Springer Berlin Heidelberg
- Paul J.J. Welfens** (1999), *Globalization of the Economy, Unemployment and Innovation*, Springer Berlin Heidelberg
- Paul J.J. Welfens** (1999), *EU Eastern Enlargement and the Russian Transformation Crisis*, Springer Berlin Heidelberg
- Paul J.J. Welfens; S. Jungbluth; H. Meyer; John T. Addison; David B. Audretsch; Thomas Gries; Hariolf Grupp** (1999), *Globalization, Economic Growth and Innovation Dynamics*, Springer Berlin Heidelberg
- Paul J.J. Welfens; David B. Audretsch; John T. Addison; Hariolf Grupp** (1998), *Technological Competition, Employment and Innovation Policies in OECD Countries*, Springer Berlin Heidelberg
- John T. Addison; Paul J.J. Welfens** (1998), *Labor Markets and Social Security*, Springer Berlin Heidelberg
- Axel Börsch-Supan; Jürgen von Hagen; Paul J.J. Welfens** (1997), *Wirtschaftspolitik und Weltwirtschaft*, Springer Berlin Heidelberg
- Paul J.J. Welfens; George Yarrow** (1997), *Telecommunications and Energy in Systemic Transformation*, Springer Berlin Heidelberg
- Jürgen v. Hagen; Paul J.J. Welfens; Axel Börsch-Supan** (1997), *Springers Handbuch der Volkswirtschaftslehre 2*, Springer Berlin Heidelberg
- Paul J.J. Welfens; Holger C. Wolf** (1997), *Banking, International Capital Flows and Growth in Europe*, Springer Berlin Heidelberg
- Paul J.J. Welfens** (1997), *European Monetary Union*, Springer Berlin Heidelberg
- Richard Tilly; Paul J.J. Welfens** (1996), *European Economic Integration as a Challenge to Industry and Government*, Springer Berlin Heidelberg
- Jürgen v. Hagen; Axel Börsch-Supan; Paul J.J. Welfens** (1996), *Springers Handbuch der Volkswirtschaftslehre 1*, Springer Berlin Heidelberg
- Paul J.J. Welfens** (1996), *Economic Aspects of German Unification*, Springer Berlin Heidelberg
- Paul J.J. Welfens; Cornelius Graack** (1996), *Telekommunikationswirtschaft*, Springer Berlin Heidelberg
- Paul J.J. Welfens** (1996), *European Monetary Integration*, Springer Berlin Heidelberg

**Michael W. Klein; Paul J.J. Welfens** (1992), Multinationals in the New Europe and Global Trade, Springer Berlin Heidelberg

**Paul J.J. Welfens** (1992), Economic Aspects of German Unification, Springer Berlin Heidelberg

**Paul J.J. Welfens** (1992), Market-oriented Systemic Transformations in Eastern Europe, Springer Berlin Heidelberg

**Paul J.J. Welfens** (1990), Internationalisierung von Wirtschaft und Wirtschaftspolitik, Springer Berlin Heidelberg

**Paul J.J. Welfens; Leszek Balcerowicz** (1988), Innovationsdynamik im Systemvergleich, Physica-Verlag Heidelberg