

UNIVERSITY OF WUPPERTAL  
BERGISCHE UNIVERSITÄT WUPPERTAL

EUROPÄISCHE WIRTSCHAFT  
UND  
INTERNATIONALE MAKROÖKONOMIK



Paul J.J. Welfens

**Savings, Investment and Growth: New Approaches for  
Macroeconomic Modelling**

Diskussionsbeitrag 128  
Discussion Paper 128

*Europäische Wirtschaft und Internationale Wirtschaftsbeziehungen  
European Economy and International Economic Relations*

ISSN 1430-5445



Paul J.J. Welfens

**Savings, Investment and Growth: New Approaches for  
Macroeconomic Modelling**

February 2005

*Herausgeber/Editor: Prof. Dr. Paul J.J. Welfens, Jean Monnet Chair in European Economic Integration*

EUROPÄISCHES INSTITUT FÜR INTERNATIONALE WIRTSCHAFTSBEZIEHUNGEN (EIIW)/  
EUROPEAN INSTITUTE FOR INTERNATIONAL ECONOMIC RELATIONS  
Bergische Universität Wuppertal, Campus Freudenberg, Rainer-Gruenter-Straße 21,  
D-42119 Wuppertal, Germany  
Tel.: (0)202 – 439 13 71  
Fax: (0)202 – 439 13 77  
E-mail: [welfens@uni-wuppertal.de](mailto:welfens@uni-wuppertal.de)  
[www.euroeiiw.de](http://www.euroeiiw.de)

JEL classification: E10, E20, E60

Key words: Neoclassical growth model, Keynes-Solow model, macroeconomic modelling



**Summary:** We prove that profit maximization behavior and the neoclassical growth model can be consistent. Moreover, we present a new medium term Keynes-Solow macro model. The short-term Keynesian macroeconomic model shows that a rise in the savings rate will reduce output, while higher savings imply for the neoclassical growth model a rise in the long run per capita income. The Keynes-Solow model sheds new light on the role of the savings rate. The Keynes-Solow model presented links both the short run and the long run, thus suggesting a new way of consistent macroeconomic modelling and of analyzing the efficiency of fiscal and monetary policy – and the role of supply-side policy. The model also is applied to some key issues of the New Economy, whose characteristics affect the effectiveness of fiscal policy and other policy instruments. The model presented suggests that government policy should focus not only on short term effects but more on medium term aspects. The medium term effect of monetary policy is larger than in the short run. Supply-side policy will raise medium term output whenever the golden rule is fulfilled and under certain other conditions, too. Our conclusions go well beyond the monetarist debate and put the focus on the consumption function, the output elasticity of capital and the depreciation rate – as well as the role of foreign direct investment.

**Zusammenfassung:** Es wird erstmals gezeigt, dass Gewinnmaximierung und neoklassisches Wachstumsmodell konsistent sein können. Darüber hinaus wird ein neuartiges mittelfristiges Keynes-Solow Modell entwickelt. Das kurzfristige keynesianische Modell zeigt, dass ein Anstieg der Sparquote die Produktion reduziert, während das neoklassische Wachstumsmodell eine höhere Sparquote mit einem höheren langfristigen Pro-Kopf-Einkommen gleichsetzt. Das Keynes-Solow-Modell beleuchtet die Rolle der Sparquote in differenzierter Weise. Die Verbindung von kurzer und langer Frist im Keynes-Solow-Modell zeigt einen neuen Ansatz für eine konsistente makroökonomische Modellierung und gibt neue Antworten zur Frage der Effizienz von Geld- und Fiskalpolitik – sowie Fragen der Angebotspolitik. Das Modell wird im Übrigen auch auf einige Fragen der New Economy bezogen, wobei ein Einfluss der Informations- und Kommunikationstechnologie auf die Effektivität der Fiskalpolitik und anderer Politikinstrumente aufgezeigt wird. Der vorgestellte Modellsansatz legt eine stärkere wirtschaftspolitische Betonung mittelfristiger Politikeffekte nahe. Der mittelfristige Effekt expansiver Geldpolitik ist größer als der kurzfristige. Angebotspolitik im Sinn einer Erhöhung der Sparquote wirkt mittelfristig expansiv, falls die „goldene Regel“ erfüllt ist – und unter bestimmten anderen Bedingungen ebenfalls. Die Schlussfolgerungen gehen weit über die Monetarismus-Debatte hinaus und betonen Parameter der Konsumfunktion, die Größen der Angebotselastizität des Kapitals und der Abschreibungsrate sowie die Rolle von Direktinvestitionen.

I am very grateful for technical and editorial support by Jens Perret, Martin Keim (Wuppertal) and Michael Agner (Berlin) and discussions with (Washington DC) and Andre Jungmittag and Dora Borbély (EIIW). The usual disclaimer applies.

Paul J.J. Welfens © Wuppertal, 2005,



*Prof. Dr. Paul J.J. Welfens, President of the European Institute for International Economic Relations at the University of Wuppertal (EIIW), chair in Macroeconomics and Jean Monnet Chair in European Economic Integration, Gauss-Str. 20, D-42119 Wuppertal, +49 202 439 3171, [www.euroeiiw.de](http://www.euroeiiw.de), [www.econ-international.net](http://www.econ-international.net), [welfens@eiiw.uni-wuppertal.de](mailto:welfens@eiiw.uni-wuppertal.de)*

**EIIW Paper No. 128**

**February 2005**

## **Savings, Investment and Growth: New Approaches for Macroeconomic Modelling**

<b>1. Introduction.....</b>	<b>1</b>
<b>2. A Medium-term Keynes-Solow Model.....</b>	<b>1</b>
<b>2.1. Capital Accumulation Dynamics and Profit Maximization .....</b>	<b>2</b>
<b>2.2. Chosing a Consistent Investment Function and a New Consumption Function ..</b>	<b>4</b>
<b>2.3. Multiplier Analysis .....</b>	<b>6</b>
<b>3. Conclusions and Possible Extensions .....</b>	<b>14</b>
<b>Appendix: Comparing the Short Run Keynesian Model and the Medium Term Approach.....</b>	<b>16</b>
<b>References .....</b>	<b>18</b>





# 1. Introduction

In macroeconomics, there are two contrasting views to the role of the savings rate. In a short-term Keynesian perspective, a rise in the savings rate  $s$  reduces the equilibrium income. However, the long run neoclassical growth model suggests that a rise in the savings rate raises equilibrium real income. Short term macroeconomic analysis is rarely linked to long term dynamics, and this can be misleading for policymakers. Moreover, it leaves policymakers, who would like to know under which conditions a rise in the savings ratio shows up in a contractionary or an expansionary impact, confused. The following analysis – for a non-inflationary world - is straightforward and first recalls the simple long run neoclassical growth model (SOLOW, 1956) and the short run Keynesian macro model before we merge both approaches within a new medium-term model. We present the multipliers for monetary policy, fiscal policy and supply side policy (rise in the savings rate  $s$ ). Section 2 presents the model, and the final section gives some policy conclusions. Several conclusions reached are in marked contrast to the standard Keynesian model and also go beyond the monetarist debate.

## 2. A Medium-term Keynes-Solow Model

For the case of a production function  $Y = K^\beta L^{1-\beta}$ , capital depreciation is  $\delta K$  (depreciation is proportionate to the capital stock  $K$ ,  $0 < \beta < 1$ ), savings  $S = sY$  and gross investment  $I = S$  the standard neoclassical growth model (assuming that the population  $L$  is constant) shows that long steady state equilibrium capital intensity  $k^\#$  and output  $Y^\#$ , respectively, is given by the expression

$$(1) k^\# = [s / \delta]^{1/(1-\beta)}$$

$$(2) Y^\# = L [s / \delta]^{\beta/(1-\beta)}$$

Here  $\delta$  is the depreciation rate of capital,  $s$  is the savings rate. As the steady state value  $Y^\#$ , is obtained from the differential equation for the change in the capital intensity  $k = K / L$ , namely

$$(3) dk / dt = s(Y / L) - \delta k = s k^\beta - \delta k$$

long run output  $Y^\#$ , is obtained by taking  $t \rightarrow \infty$  or by setting  $dk / dt = 0$ . Rational forward-looking individuals with infinite time horizons would thus expect,  $Y$  to converge towards  $Y^\#$  in the long run. The simple neoclassical growth model has the well-known implication that the higher the savings rate, the higher equilibrium output. Hence in a long run perspective, a rise in the savings rate will lead to higher equilibrium output.

## 2.1. Capital Accumulation Dynamics and Profit Maximization

It is unclear how the neoclassical SOLOW growth model can be reconciled with profit maximization which suggests that  $dk/dt$  should depend on the difference between the net marginal product of capital  $Y_K - \delta$  and the exogenous real interest rate  $r$  (note that we are considering an economy without inflation here). We briefly suggest a way to resolve the problem. One may interpret equation (3) as the change in the supply of new capital per capita; this typically is represented by the supply of savings in capital markets. The change in the demand for new capital per capita can be written – as proposed here – as:

$$(4) \quad dk^D / dt = (Y_K - \delta - r)k$$

The equation - with  $b$  representing a positive parameter - says that net investment per capita is proportionate to

- the difference between the net marginal product of capital and the real interest rate
- the capital intensity  $k$

Note that  $dk^D / dt$  will finally fall as the net marginal product of capital  $Y_K - \delta$  is approaching the exogenous real interest rate; however, this effect is mitigated by the rise of  $k$  over time until finally  $Y_K - \delta = r$  so that net investment demand per capita becomes zero.

The adjustment parameter  $b$  is exogenous at first glance. However, if the investment goods market is to be in equilibrium all the time, that is  $dk/dt = dk^D / dt$ , we must have  $b[r + \delta] = \delta$  and  $s = b\beta$ . This follows from rewriting equation (4) as

$$(5) \quad dk^D / dt = b(\beta k^{\beta-1} - r - \delta)k = b\beta k^\beta - [br + b\beta]k$$

Clearly the path for  $k^D$  will coincide with the  $k$  in equation (3) only if

$$(6) \quad b\beta = s ;$$

$$(7) \quad b[r + \delta] = \delta$$

These two equations imply  $[s / \beta][r + \delta] = \delta$  and therefore:

$$(8) \quad r = \delta[(\beta / s) - 1]$$

By implication the real interest rate is positive only if  $\beta > s$ . If (8) is fulfilled the supply of net investment per capita and the demand for net investment per capita coincide at any point of time. Note that the condition for the case of the golden rule (condition which maximizes per capita consumption) is fulfilled if  $\delta = r$  and in the long run  $r = Y_K$  if  $\beta / s = 2$ , that is  $s = \beta / 2$ . As  $\beta$  is put for OECD countries typically at around 0.33 the optimal savings rate – maximizing long run per capita consumption – thus would be 16.5%. Note that for the case of a real money demand function  $m = hY - h'r$  ( $m$  is real money balances  $M/P$  where  $M$  and  $P$  stand for the nominal money stock and the price level, respectively;  $r$  is the real interest rate relevant in the present set-up with zero inflation) the implication is that the central bank must set long run  $[M/P]$  per capita such that we have  $[m/L] = hk^\beta - h'k^{\beta-1}$  since  $r = \beta Y / K = \beta k^{\beta-1}$ .

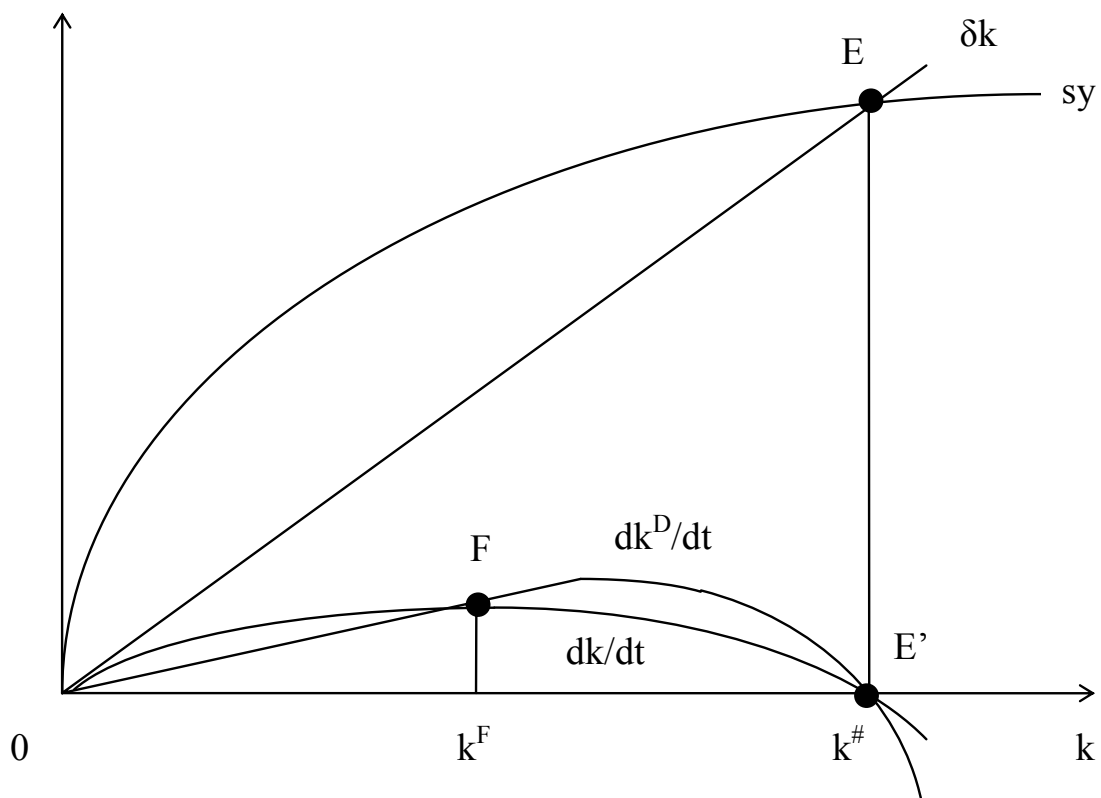
The general solution to (5) is – with  $e'$  denoting the Euler number - given by the solution of the Bernoullian differential equation  $dk^D/dt = b\beta k^\beta - b[r + \delta]k$ ; the solution for this is

$$(9) k^D(t) = \left\{ C_0 e^{-(1-\beta)b(r+\delta)t} + \beta/[r + \delta] \right\}^{1/(1-\beta)}$$

where  $C_0$  is determined by initial conditions. The adjustment speed is the higher the higher  $b$  as well as the real interest rate and the lower  $\beta$ . The adjustment speed for  $k^D(t)$  is identical with that for  $k(t)$  if  $(1-\beta)\delta = (1-\beta)b(r+\delta)$  which requires  $(r+\delta) = \delta/b$  and this condition indeed is equal to equation (7). If adjustment speeds on the supply side and the demand side in the capital market are not coinciding we could have a picture as shown in the subsequent graph where during an initial time period the supply of net investment per capita is higher than the demand for investment per capita such that we will have unemployment while in a second period (after point F) we will have inflation as demand exceeds supply; in principle one also could have a first period of inflation followed by a second transition period of unemployment.

**Fig. 1: Transitory Equilibrium (point F) and Steady-state Equilibrium**

(“time” 0F = unemployment, “time” FE’ = inflation)



We thus may argue that the SOLOW growth model could indeed be consistent with profit maximization. Subsequently we will use the net investment function suggested in (4) in a medium term KEYNES-SOLOW model; the above specification is the only formulation which is consistent with the long run steady state value of the SOLOW model.

## 2.2. Chosing a Consistent Investment Function and a New Consumption Function

An investment function – for net investment – consistent with (4) thus is  $I' = b(Y_K - r - \delta)K$  which will be used subsequently as the function describing investment demand. Whenever net investment is given by this equation we know that investment demand dynamics are potentially consistent with the SOLOW growth model. A possible modification of the case of unemployment (with the unemployment rate  $u > 0$ ) or inflation ( $\pi > 0$ ) could be formulated as  $I' = b(Y_K - r - \delta)Ke^{1-\sigma'u-\sigma''\pi}$  where  $e$  denotes the Euler number and  $\sigma'$  is a the semi-elasticity (in absolute terms) of net investment with respect to the unemployment rate ( $\sigma''$  is the semi elasticity with respect to the inflation rate). Subsequently we will use the net investment function  $I' = b(Y_K - r - \delta)K$ .

Next we turn to a standard Keynesian model of a closed economy which implies that output is determined by aggregate demand consisting of consumption  $C$ , gross investment  $I$  and real government expenditures  $G$ . We denote reinvestment as  $I^R$ , net investment as  $I'(r, Y_K, K)$ , and we also consider a standard consumption function  $C = cY^d$  ( $Y^d$  is aggregate demand). Hence output  $Y$  is given by

$$(10) Y = cY^d + I^R + I'(r, Y_K, K) + G$$

It is assumed that net investment  $I' = b(Y_K - \delta - r)K$  so that total investment  $I = I^R + b(Y_K - \delta - r)K$  which implies for the goods market equilibrium

$$(11) Y = cY^d + I^R + b(Y_K - \delta - r)K + G$$

The capacity effect of investment is neglected in the standard Keynesian setup and thus the marginal product of capital is constant in the short run. Output  $Y$  is driven by aggregate demand and thus is given – with  $s = 1 - c$  and  $I^R = \delta K$  – by the equation

$$(12) Y^d = Y = [\delta K + G + b(Y_K - \delta - r)K] / s$$

$$(13) dY / ds = -[\delta K + G + b(Y_K - \delta - r)K] / s^2 < 0$$

The conclusion is that the savings rate negatively affects the short term equilibrium real income: A rise in the savings rate ( $s' > s$ ) implies that at any real income the desired savings  $S = s'Y$  is higher than before; however, the condition  $I = S$  then implies a fall of equilibrium  $Y$ . This is in some contrast to the statement that savings from an individual perspective is useful and desirable as it is the basis for the accumulation of wealth. Note that the negative multiplier in (13) strongly differs – according to (2) - from the neoclassical long run multiplier which is given by  $dY\# / ds = \beta / (1 - \beta) L [1 / \delta]^{\beta / (1 - \beta)} [s]^{-1 / (1 - \beta)} > 0$ .

A straightforward hypothesis which combines the short run and the long run is to assume that output in the medium term is determined by weighted impacts from the demand side and the supply side (here the supply side is set equal to  $Y\#$ ):

$$(14) Y = [1 - a'(t)]Y^d + a'(t)Y\#$$

The closer the economy is to full capacity utilization the higher  $a'$  is. In a situation of extreme capacity underutilization such as the Great Depression 1930-34 – with US output showing a cumulative fall of 27% (Germany 16%, France 11%) –  $a'$  is close to zero so that aggregate demand indeed determines output.

The idea of taking into account both impacts from the demand side and the supply side will be considered subsequently in a formal model whose approach is slightly different than the above equation, but the spirit is the same. Indeed, one may consider a medium term model which means taking into account that a rise in  $K$  will reduce the marginal product of capital (in contrast to the standard Keynesian analysis) and where we use the following modified consumption function, which is a simplified version of the permanent income hypothesis: The consumption function chosen emphasizes that consumption  $C$  is influenced not only by the present income but also by the long run expected income (here  $Y\#$ ); with a consumption function

$$(15) C = ca''Y + ca'[1/(1+r)]Y\#$$

we get the following equilibrium condition for the goods market in the medium term Keynes-Solow model:

$$(16) Y = c\{a''Y + a'[1/(1+r)]L[s/\delta]^{\beta/(1-\beta)}\} + \delta K + b(\beta Y/K - \delta - r)K + G, \text{ with } a'' = (1 - a')$$

The consumption function suggested (for simplicity with  $a'$  independent of time) here states that  $C = cY + ca'[Y\# - Y]$ , and hence consumption will be higher than implied by the standard consumption function  $C = cY$  whenever there is a positive expected difference between long run output  $Y\#$  and present output  $Y$ . Approaching the steady state, we indeed will see that consumption  $C$  is converging towards  $C_t = cY_t$ . Expected future income – read steady state income  $Y\#$  – is discounted by  $1/(1+r)$ ; as an alternative, one might want to multiply it by a different discount factor which would also reflect the subjective probability that the economy will converge towards the hypothetical  $Y\#$ . A more complex approach could take into account both demand and supply-side dynamics over many periods, but the approach presented here catches the basic idea of taking into account both present and future income.

In the above equation we have taken into account that the marginal product is equal to  $\beta Y/K$ . Assuming  $r$  to be exogenous we have medium term equilibrium output – based on our medium term approach – given by:

$$(17) Y = \{ca'[1/(1+r)]L[s/\delta]^{\beta/(1-\beta)} + \delta K(1-\beta) - brK + G\} / [s + ca' - b\beta]$$

Note that the above equation determines  $Y$  through medium term aggregate demand where consumers are forward looking economic agents.

### 2.3. Multiplier Analysis

We now can take a look at the simple multiplier for the goods market (and later we turn to the broader picture with goods market, money market and the foreign exchange market). From (17) we get – while assuming that  $s + ca' > b\beta$  :

$$(18) \quad dY / dG = 1 / [s + ca' - b\beta] > 0$$

In the medium term model fiscal policy is (ignoring at first the impact of  $ca'$ ) more effective than in the short run standard model since a rise of  $G$  raises output which translates not only into higher consumption but also into higher net investment since a rise of  $Y$  also implies a rise of the average product of capital. If by coincidence equation (6) is fulfilled so that  $b\beta = s$  the multiplier would be  $1/(ca')$ ; note that an economy which is close to the steady state value of output  $Y\#$  may be expected to have  $a'$  close to unity so that the fiscal multiplier is relatively small. If  $s + ca'$  approaches  $b\beta$  the multiplier will approach infinity. Whether such a case is of any practical relevance is an empirical question; note that one can dismiss the idea to artificially reduce the capital stock as a means to eliminate an excess supply in the capital market – followed by an expansionary fiscal policy whose multiplier thus is raised as the condition  $s = b\beta$  is fulfilled: An artificial reduction of the capital stock would, of course, reduce expected long run income.

Moreover, one should emphasize that approaching  $Y\#$  the equilibrium condition for the goods market will become  $Y = cY\# + \delta K\# + G$  so that with  $Y$  approaching  $Y\#$  government consumption  $G$  is endogenous. By implication it is clear that a fiscal multiplier – and therefore fiscal policy - makes no sense if the economy is close to  $Y\#$  (the long run case). The following multiplier analysis thus is confined to a medium term policy perspective.

The medium term fiscal multiplier from (15) could be smaller or larger than the traditional short-run fiscal multiplier  $1/s$ . If the transitory consumption demand effect as captured by  $ca'$  exceeds  $b\beta$ , we will have a smaller fiscal multiplier than the short-run Keynesian model suggests. The higher  $\beta$  and  $b$  are, the higher is the fiscal multiplier. Thus fiscal policy becomes more effective if there is a change in technology which leads to a rise of  $\beta$  and if the responsiveness of investors with respect to differences between the net marginal product of capital and the real interest rate has increased. The reason is straightforward since for a given interest rate a rise of  $G$  which translates into a rise of  $Y$  will have the higher an impact of the marginal (and average) product of capital and net investment the larger  $\beta$  and  $b$ , respectively. The increasing role of information and communication technology (ICT) might have raised  $\beta$  since increasing output is facilitated – at least in those sectors where supply is based on software and digital inputs. From this perspective ICT might have raised the effectiveness of fiscal policy. However, to the extent that expansion of ICT has translated into a rise of  $a'$  there is an offsetting effect, and only empirical analysis can tell whether the fiscal multiplier has increased or fallen in the digital economy.

In a period in which there is a high gap between present and long term income,  $a'$  will be relatively high so that the fiscal multiplier is relatively low. From this perspective, emphasis on expansionary fiscal policy in a deep recession – such as the case during the Great Depression – is indeed useful, namely to the extent that deep recession is translated by economic actors as falling weight of future long run income. With massive underutilization of capacity, one could also argue that  $b$  – the reaction parameter in the net investment function – will be close to zero which also reinforces the statement that

expansionary fiscal policy in a deep recession should be quite useful to raise real income. The fiscal multiplier effect should also be high if the time horizon of people is shortening, as is typically the case in periods of high business uncertainty or in war periods. If the output elasticity of capital is increased ( $\beta$  goes up) – e.g., in the context of the unfolding of the New Economy –, the fiscal multiplier is reduced. It is also reduced if investors' responsiveness to a difference between the marginal product of capital and the real interest rate increases (e.g., the parameter  $b$  could be raised through reduced information costs about such differences). Again consider the impact of the new economy and information and communication technology which has raised market transparency with respect to investment opportunities in non-ICT fields while the ICT field itself – given its enormous technological dynamics – is rather opaque for outside investors.

As regards the multiplier for  $L$  it is obvious that a higher  $L$  raises the long run expected equilibrium real income – hence permanent income is raised - and therefore the multiplier is positive provided that  $s > ca' + b\beta$ . In an economy with a relative small capital stock or with a very small responsiveness (sufficiently small  $b$ ) of net investment with respect to the marginal product of capital, we have a positive multiplier.

$$(19) \quad dY / dL = \left\{ ca' [1 / (1 + r)] [s / \delta]^{\beta / (1 - \beta)} \right\} / [s + ca' - b\beta] > 0$$

$$(20) \quad dY / ds = \left\{ - \left\{ ca' [1 / (1 + r)] L [s / \delta]^{\beta / (1 - \beta)} + (\delta - br)K + G \right\} \right. \\ \left. + \left[ (s + ca' - b\beta) ca' [1 / (1 + r)] L [\beta / (1 - \beta)] s^{(2\beta - 1 / (1 - \beta))} \right] / (s + ca' - b\beta)^2 \right\}$$

A sufficient condition for  $dY / ds$  in equation (20) to be negative is given by:

$$s + ca' < b\beta \quad \text{and} \quad \delta > br$$

A sufficient condition for  $dY / ds$  to be positive is given by:

$s + ca' < b\beta$  and  $ca' [1 / (1 + r)] L [s / \delta]^{\beta / (1 - \beta)} + G < (br - \delta)K$  where there has to be  $br > \delta$ . These conditions – suggesting under the assumption that  $br > \delta$  - that a rise of the savings rate raises output if the savings rate is and the impact ( $a'$ ) of the long run real income on consumption are relatively high - point to interesting empirical issues. Thus a society with a positive gap between  $Y\#$  and  $Y$  (and hence a high parameter  $a'$ ) is likely to benefit from government measures which stimulate the savings rate: medium term income will rise. To the extent than one interpretes  $\beta$  as a distribution parameter one may conclude that in a country with a critically high  $\beta$  – as might be observed in developing countries or in some transition economies – a rise of the savings rate might reduce medium term equilibrium output.

The real interest rate can, of course, be endogenized (assuming a zero inflation rate) by taking into account the money market equilibrium condition:

$$(21) \quad M / P = hY - h'r$$

$$(22) \quad r = [hY - M / P] / h'$$

If we endogenize the interest rate we get from inserting (21) into (16)

$$(23) \quad Y = c \{ a'' Y + a' [1 / (1 + [hY - M / P] / h')] K \} + G$$

Using Cramer's rule we can calculate the multipliers for monetary and fiscal policy from differentiating (16) and (21) and the respective equation written in matrix notation:

$$\begin{pmatrix} h & -h' \\ (s+ca'-b\beta) & bK - \frac{ca'L}{(1+r)^2} \left(\frac{s}{\delta}\right)^{\beta/(1-\beta)} \end{pmatrix} \begin{pmatrix} dY \\ dr \end{pmatrix} = \begin{pmatrix} 0 & 1 & 0 \\ 1 & 0 & \left(\frac{dY}{ds}\right)' \end{pmatrix} \begin{pmatrix} dG \\ d(M/P) \\ ds \end{pmatrix}$$

Where  $\left(\frac{dY}{ds}\right)'$  denotes  $(s+ca'-b\beta)\frac{dY}{ds}$  with the  $\frac{dY}{ds}$  from equation (20)

$$\text{And therefore } \left(\frac{dY}{ds}\right)' = \left\{ -\left\{ ca'[1/(1+r)]L[s/\delta]^{\beta/(1-\beta)} + (\delta-br)K + G \right\} \right. \\ \left. + \left[ (s+ca'-b\beta)ca'[1/(1+r)]L[\beta/(1-\beta)]s^{(2\beta-1)/(1-\beta)} \right] / (s+ca'-b\beta) \right\}$$

$$\det(A) = \det \begin{pmatrix} h & -h' \\ (s+ca'-b\beta) & bK - \frac{ca'L}{(1+r)^2} \left(\frac{s}{\delta}\right)^{\beta/(1-\beta)} \end{pmatrix} =$$

$$\left\{ [s+ca'-b\beta]h' + hbK \right\} [1+r]^{2\delta\beta/(1-\beta)} ca' Lhs^{\beta/(1-\beta)} \left\{ / [1+r]^{2\delta\beta/(1-\beta)} \right\}$$

which implies:

$$\frac{1}{\det(A)} = \frac{(1+r)^2 \delta^{\beta/(1-\beta)}}{\left( (s+ca'-b\beta)h' + hbK \right) (1+r)^2 \delta^{\beta/(1-\beta)} - ca' Lhs^{\beta/(1-\beta)}}$$

And therefore the Multipliers are:

$$\frac{dY}{dG} = \frac{h'(1+r)^2 \delta^{\beta/(1-\beta)}}{\left( (s+ca'-b\beta)h' + hbK \right) (1+r)^2 \delta^{\beta/(1-\beta)} - ca' Lhs^{\beta/(1-\beta)}}$$

$$(s+ca'-b\beta)h' + hbK < 0 \Rightarrow \frac{dY}{dG} < 0$$

In a poor country – with very low  $s$  and low  $K$  – the condition for  $dY/dG$  is likely to be met so that fiscal policy is ineffective with respect to output. The condition stated implies that for  $dY/dG < 0$ ;  $(s+ca'-b\beta)$  needs to be negative, but this is not sufficient as in equation (18). As well  $(s+ca'-b\beta) > 0$  does not imply  $dY/dG > 0$  but still is a necessary condition. Empirically, it will be interesting to study whether  $b\beta$  exceeds  $s+ca'$ . The multiplier  $dY/dG$  shows an ambiguous impact of the size of the country considered since a rise of  $L$  reduces any positive multiplier result; the same holds for  $K$  as long as  $(s+ca'-b\beta)$  is positive. The more strongly investors react to any difference between the net marginal product and  $r$  (parameter  $b$ ) the lower is the fiscal multiplier.

The medium term fiscal multiplier is the larger (assuming that it is positive) the larger the interest elasticity of money and  $h'$ , respectively, is. Comparing the above fiscal multiplier to the familiar short run Keynesian multiplier  $dY/dG = 1/(s+h||-b||/[-h'])$  – suggesting that the higher  $h'$  the larger the multiplier – we have a similar result. However, here we also see the impact of the effect of changes in aggregate demand on the average product of capital and investment, respectively; and we see the impact of reinvestment and



of the technology parameter  $\beta$ . The lower the depreciation rate the lower is the fiscal multiplier.

Compared to our simple fiscal multiplier we can see – as an impact from the money market – that a rise of  $a'$ , namely the weight consumers attach to long run income has an ambiguous impact on the multiplier; the impact of  $ca'$  is positive if  $h + (1+r)^{2\delta\beta/1-\beta}$  falls short of  $Lhs^{\beta/(1-\beta)}$ ; a low real interest rate and a low income elasticity of the demand for money as well as a low capital depreciation rate make it more likely that the impact of  $ca'$  is positive. The impact of the savings rate is not as strong as the simple multiplier for the goods market suggests: the money demand effect is reducing the denominator. The higher the level of the real interest rate the smaller is the fiscal multiplier (assuming  $dY/dG > 0$ ) which points to a strategic advantage of countries with low real interest rates – this could e.g. reflect credibility of monetary policy or of fiscal policy. The US which is known to have the lower real interest rates among OECD countries – except for the special case of Switzerland – thus should have an advantage while the Euro zone has a disadvantage once that the conflicts about the non-fulfillment of the Stability and Growth Pact contribute to higher real interest rates. This points to an interesting paradox, namely that ministers of finance eager to loosen the stability pact in order to get a larger room for manoeuvre in fiscal policy matters ultimately will reduce the effectiveness of fiscal policy. The higher the depreciation rate the smaller is the fiscal multiplier provided that it is positive. This is an important message for developing countries eager to catch up with advanced industrialized countries: (i) in such countries repair management in firms often is relatively poor which implies a relatively high depreciation rate; (ii) choice of technology often is biased by government in favour of importing advanced capital equipment from OECD countries which, however, is not only likely to be inconsistent with international relative factor price differentials but also could force the country to pursue a modernization policy which tries to be in line with that in advanced countries; there is pressure to always introduce latest foreign technologies fast so that the effective depreciation rate could be high.

$$\frac{dY}{dM/P} = \frac{bK(1+r)^2 \delta^{\beta/(1-\beta)} - ca' Lhs^{\beta/(1-\beta)}}{((s + ca' - b\beta)h' + hbK)(1+r)^2 \delta^{\beta/(1-\beta)} - ca' Lhs^{\beta/(1-\beta)}}$$

$$\frac{dY}{ds} = \frac{h'(1+r)^2 \delta^{\beta/(1-\beta)}}{((s + ca' - b\beta)h' + hbK)(1+r)^2 \delta^{\beta/(1-\beta)} - ca' Lhs^{\beta/(1-\beta)}} \left( \frac{dY}{ds} \right)'$$

Obviously the multiplier for monetary policy is zero if  $bK(1+r)^{2\delta\beta/(1-\beta)}$  is equal to  $ca' Lhs^{\beta/1-\beta}$ . The multiplier for monetary policy will be infinite in absolute terms if  $((s + ca' - b\beta)h' + hbK)(1+r)^{2\delta\beta/1-\beta}$  is approaching  $ca' Lhs^{\beta/1-\beta}$ . Note that for the special case that the depreciation rate is zero the multiplier is unity. Dividing the numerator and the denominator by  $bK(1+r)^{2\delta\beta/(1-\beta)}$  we can see that the multiplier is greater unity – provided that it is positive – if the condition holds that  $[(s + ca' - b\beta)h']bK + h$  is smaller than unity.

Comparing the above monetary policy multiplier to the familiar Keynesian short-run multiplier –  $dY/d(M/P) = [h'/b]/[s + (b/h)h]$  – we can see that there is no liquidity trap if  $s + ca'$  is equal to  $b\beta$ .

Monetary policy is the more effective, the higher  $b$  – assuming that the multiplier is positive.

A supply-side policy, defined as a rise of  $s$ , can have a positive or a negative impact where the sign for the multiplier  $dY/ds$  depends on a complex set of parameter conditions. The multiplier is zero if the interest elasticity of the demand for money is zero. The multiplier is the higher the higher the depreciation rate is and the higher the size of the capital stock is the lower the multiplier (assuming  $(dY/ds)'$  to be positive).

As regards the impact of real money balances one might want to consider a refined model in which real output is affected by real money balances so that  $Y = (M/P)^{\beta'} K^{\beta} L^{1-\beta-\beta'}$ ; in addition one might want to modify the savings function by assuming  $S = sY[Y/(M/P) + K]$  so that savings per capita fall – assuming a given per capita income – as the ratio income to wealth increases.

Finally, one should note that from (17) we get the slope of the medium term goods market equilibrium schedule ISM as  $dr/dY = [s + (ca' - b\beta)]/[ca'L(s/\delta)^{\beta/1-\beta} - b]$  which can be larger or smaller than the short-run schedule of the familiar IS curve with slope  $dr/dY = s/(-b)$ . If we assume that (i)  $ca' = b\beta$  or (ii)  $ca' < b\beta$  while the numerator remains positive the slope of the ISM curve is definitively smaller in absolute terms than the standard IS curve. To put it different: An expansionary monetary policy will raise output in the medium term more strongly than in the short run (see appendix). However, we have a certain paradox of monetary policy since in the long run monetary policy is endogenous as we have emphasized. Any medium term monetary policy which reduces in a non-inflationary world the interest rate temporarily below the steady state equilibrium interest rate – the natural interest rate to use WICKSELL's term – must adopt in the long run a contractionary monetary policy which brings up the interest rate to the natural level. We thus may conclude that expansionary monetary policy will have an effect on medium term output only if individuals discount future monetary policy strongly, or if the initial interest rate was above the natural rate.

### ***Open Economy: Mundell Fleming Solow Model***

For the case of an open economy we have to distinguish the case of fixed exchange rates versus the case of flexible exchange rates. The subsequent model is a hybrid Mundell-Fleming-Solow model (MFS) where – denoting real net capital imports as  $Q$  and  $q = eP^*/P$  ( $e$  is the nominal exchange rate,  $P$  the price level,  $*$  denotes foreign variables) - we have added the following balance of payments equilibrium condition to equations (16) and (22):

$$(24) \quad Q(r, r^*, q) = q^{*J}(q^*, Y, Y\#) - X(Y^*, Y^{\#}, q^*)$$

In the context of an open economy we also have to modify the investment function  $I$ , which now includes – following the model of FROOT/STEIN (1991) who emphasize the role of imperfect capital markets – the real exchange rate variable, since a real depreciation of the currency of country  $I$  (home country) will stimulate the inflow of foreign direct investments:  $I = \delta K + b(\beta y/K - \delta - r) + Hq^*$ , where the parameter  $H$  is positive. Therefore net capital imports depend not only on the ratio of the domestic real interest rate  $r$  to the foreign interest rate variable, but also on the real exchange rate  $eP^*/P$ . As consumption depends on both  $Y$  and  $Y\#$  it is natural to state the hypothesis that imports also depend on both  $Y$  and  $Y\#$ ; and that real exports positively depend on both  $Y^*$  and

$Y^{\#}$ . Compared to traditional modelling, the impacts of  $q^*$  and of  $Y^{\#}$  and  $Y^{\#}$  are new in our statement of the balance of payments equilibrium condition; one may note that in principle one additionally might want to consider the impact of  $q^{\#}/q^*$  on capital inflows as well as trade, but for the sake of simplicity we will ignore this here. In a small open economy we can thus state the following equation system with  $e$ ,  $Y$  and  $r$  as endogenous variables (case of flexible exchange rates). We can calculate the multipliers for three exogenous variables, namely for expansionary monetary policy ( $dM$ ) or fiscal policy ( $dG$ ) or a change of current foreign output ( $Y^*$ ) or a change of long run foreign output ( $dY^{\#}$ ) or a change of long run domestic output ( $dL$ ) as well as the impact of a rise in the savings ratio ( $ds$ ). In reality, a rise in the savings ratio could be linked to special incentives of government aimed at raising the savings rate and the investment ratio so that  $ds > 0$  can be interpreted as supply side policy. The medium term goods market equilibrium condition in an open economy with foreign direct investment reads:

$$(25) \quad Y = c \left\{ a' Y + a' [1/(1+r)] L [s/\delta]^{\beta/(1-\beta)} \right\} \\ + \delta K + b(\beta Y - rK) + Hq^* + G + X(Y^*, Y^{\#}, q^*) - q^{*J}(q^*, Y, Y^{\#})$$

Differentiating (25), (22) and (24) gives the following system of equations in matrix notation :

$$\begin{pmatrix} s + ca' - b\beta + q^* J_Y & bK - \frac{ca' L}{(1+r)^2} \left( \frac{s}{\delta} \right)^{\beta/(1-\beta)} & -H + J + q^* J_{q^*} - X_{q^*} \\ h & -h' & 0 \\ q^* J_Y & -Q_r & -Q_{q^*} + J + q^* J_{q^*} - X_{q^*} \end{pmatrix} \begin{pmatrix} dY \\ dr \\ dq^* \end{pmatrix} =$$

$$= \begin{pmatrix} 1 & 0 & -Ya'' - \frac{a' L (s - \beta)}{(1+r)(1-\beta) \delta^{\beta/(1-\beta)}} s^{(2\beta-1)/(1-\beta)} & X_{Y^*} & X_{Y^{\#}} & \frac{a'}{1+r} \left( \frac{s}{\delta} \right)^{\beta/(1-\beta)} \\ 0 & \frac{1}{P} & 0 & 0 & 0 & 0 \\ 0 & -\frac{Q_{[M/P]/Y}}{PY} & 0 & X_{Y^*} & X_{Y^{\#}} & 0 \end{pmatrix} \begin{pmatrix} dG \\ dM \\ ds \\ dY^* \\ dY^{\#} \\ dL \end{pmatrix}$$

This implies:

$$\det(B) = \det \begin{pmatrix} s + ca' - b\beta + q^* J_Y & bK - \frac{ca' L}{(1+r)^2} \left( \frac{s}{\delta} \right)^{\beta/(1-\beta)} & -H + J + q^* J_{q^*} - X_{q^*} \\ h & -h' & 0 \\ q^* J_Y & -Q_r & -Q_{q^*} + J + q^* J_{q^*} - X_{q^*} \end{pmatrix}$$

$$= (-H - X_{q^*} + J + q^* J_{q^*}) (-Q_{q^*} h + h' q^* J_Y) + (-Q_{q^*} - X_{q^*} + J + q^* J_{q^*})$$

$$\left[ -h' (s + ca' - b\beta + q^* J_Y) - h (bK - ca' L [s/\delta]^{\beta/(1-\beta)} / (1+r)^2) \right]$$

Furthermore we will define:

$$U = 1/\det(B)$$

The multipliers for a change in  $G$ ,  $M$ ,  $e$  (read  $q^*$  as  $P$  and  $P^*$  are assumed to be constant) and  $s$  are as follows:

$$dY/dG = Uh'(-Q_{q^*} + J + q^* J_{q^*} - X_{q^*})$$

$$dY/dM = U/P \left\{ \left( bK - \frac{ca'L}{(1+r)^2} \left( \frac{s}{\delta} \right)^{\beta/(1-\beta)} \right) (-Q_{q^*} + J + q^* J_{q^*} - X_{q^*}) \right. \\ \left. + Q_r (-H + J + q^* J_{q^*} - X_{q^*}) \right\}$$

$$dY/ds = Uh' \left( Ya'' + \frac{a'L(s-\beta)}{(1+r)(1-\beta)\delta^{\beta/(1-\beta)}} s^{(2\beta-1)/(1-\beta)} \right) (-Q_{q^*} + J + q^* J_{q^*} - X_{q^*})$$

$$dr/dG = -Uh'(-Q_{q^*} + J + q^* J_{q^*} - X_{q^*})$$

$$dr/dM = U/P \left\{ (s + ca' - b\beta + q^* J_Y) (-Q_{q^*} + J + q^* J_{q^*} - X_{q^*}) \right. \\ \left. - (q^* J_Y + Q_{[M/P]/Y} [M/P]/Y^2) (-H + J + q^* J_{q^*} - X_{q^*}) \right\} \\ - UhQ_{[M/P]/Y} [1/P]/Y (-H - X_{q^*} + J + q^* J_{q^*})$$

$$dr/ds = Uh'(-Q_{q^*} + J + q^* J_{q^*} - X_{q^*}) \left( Ya'' + \frac{a'L(s-\beta)}{(1+r)(1-\beta)\delta^{\beta/(1-\beta)}} s^{(2\beta-1)/(1-\beta)} \right)$$

$$dY/dY^* = -Uh' X_{Y^*} (Q_{q^*} - H)$$

$$dY/dY^* \# = -Uh' X_{Y^* \#} (H - Q_{q^*})$$

$$dY/dL = -U \frac{a'}{1+r} \left( \frac{s}{\delta} \right)^{\beta/(1-\beta)} h'(-Q_{q^*} - X_{q^*} + J + q^* J_{q^*})$$

$$dr/dY^* = -UhX_{Y^*} (H - Q_{q^*})$$

$$dr/dY^* \# = -UhX_{Y^* \#} (H - Q_{q^*})$$

$$dr/dL = -U \frac{a'}{1+r} \left( \frac{s}{\delta} \right)^{\beta/(1-\beta)} h'(-Q_{q^*} - X_{q^*} + J + q^* J_{q^*})$$

$$dq^*/dY^* = UX_{Y^*} \left[ -hQ_r + h'(q^* J_Y + Q_{[M/P]/Y} [M/P]/Y^2) \right. \\ \left. + \left( -h'(s + ca' - b\beta - X_Y + q^* J_Y) - h(bk - ca'L[s/\delta]^{\beta/(1-\beta)} / (1+r)^2) \right) \right]$$

$$dq^*/dY^* \# = UX_{Y^* \#} \left[ -hQ_r + h'(q^* J_Y + Q_{[M/P]/Y} [M/P]/Y^2) \right. \\ \left. + \left( -h'(s + ca' - b\beta - X_Y + q^* J_Y) - h(bk - ca'L[s/\delta]^{\beta/(1-\beta)} / (1+r)^2) \right) \right]$$

$$dq^* / dL = U \frac{a'}{1+r} \left( \frac{s}{\delta} \right)^{\beta/(1-\beta)} \left[ -hQ_\tau + h'(q^* J_Y + Q_{[M/P]Y} [M/P] / Y^2) \right]$$

One can see that  $U$  is negative if the following conditions are met:

- I.  $s + ca' > b\beta$
- II.  $q^* J_Y + Q_{[M/P]Y} [M/P] / Y^2 > 0$
- III.  $(1+r)^2 bk > ca' L(s/\delta)^{\beta/(1-\beta)}$
- IV.  $J > Q_{q^*} + X_{q^*} - q^* J_{q^*}$

As well as:

- V.  $J > H + X_{q^*} - q^* J_{q^*}$
- VI.  $Q_{q^*} h > h' q^* J_Y$

Or alternatively

- V'.  $J < H + X_{q^*} - q^* J_{q^*}$  which is equivalent to  $H > Q_{q^*}$
- VI'.  $Q_{q^*} h < h' q^* J_Y$

If one set of conditions is met, then we can draw the following conclusions about the multipliers:

$$dY / ds > 0 \text{ if } s < \beta$$

$$dY / dg > 0$$

$$dY / dM > 0 \text{ if V. is met}$$

$$dY / dY^* \text{ depends on the sign of } X_{Y^*} \text{ and if V. or V'. is met}$$

$$dY / dY^* \# \text{ depends on the sign of } X_{Y^*} \text{ and if V. or V'. is met}$$

$$dY / dL < 0$$

Note that if  $s = \beta/2$  – which implies fulfilment of the golden rule – the multiplier for  $dY / ds$  indeed is positive. The medium term model suggests that fiscal policy can be effective. Monetary policy – under certain conditions – also is effective; namely if imports are relatively high in comparison to the impact of the real exchange rate on foreign direct investment inflows and the net exports of goods and services, respectively. An important aspect concerns supply-side policy: If the savings rate is smaller than  $\beta$  a rise of  $s$  will raise medium term output. The impact of a rise of  $Y^*$  and  $Y^* \#$ , respectively, can differ in the respective sign which suggest that international policy coordination is more complex than the standard macro model suggests. Governments with emphasis on long run output – hence governments with a more long run time horizon – thus could favour different policy options than short-run oriented political actors. The assignment debate thus is affected. An explicit two country model could offer more refined results. The multipliers for the exchange rate also are interesting.

$$dr / dG > 0 \quad dr / dM < 0 \text{ if V'. is met}$$

$$dr / ds < 0$$

$dr/dY^*$  depends on the sign of  $X_{Y^*}$  and if V. or V'. is met

$dr/dY^{\#}$  depends on the sign of  $X_{Y^{\#}}$  and if V. or V'. is met

$dr/dL < 0$

A rise of government consumption raises the interest rate which is in line with the standard model. Expansionary monetary policy will reduce the interest rate under certain conditions while a rise of the savings rate will reduce the interest rate. The impact of  $Y^*$  and  $Y^{\#}$  on the interest rate might differ in sign. A rise of long run employment will reduce the medium term interest rate.

### 3. Conclusions and Possible Extensions

The results show a more differentiated picture than the familiar debate on Keynesianism versus monetarism. The analysis suggested here is a useful medium term analysis bridging in a consistent way short run standard macroeconomic analysis and long term growth analysis. Many refinements and modifications are possible, and there is a broad set of empirical issues which emerges in the model suggested. The relative size of  $s$ ,  $\beta$ ,  $\delta$  and  $b$  are of particular importance. Changes of the technological regime – such as the switch to the New Digital Economy – could alter  $\beta$ ,  $\delta$  and  $b$ .

The model presented suggests that policymakers should not only consider monetary and fiscal policy but also policies stimulating the savings ratio (and the investment ratio) as well. The more consumption is influenced by long run expected steady state income, the more attractive supply-side policies are. Countries with a stable political system should be able to exploit the impact of policy measures designed to raise long run output. However, in countries with political instability or with politicians without much reputation government will naturally have a bias in the field of supply-side policy; instead of raising the savings rate, government will be inclined to follow the logic of the short-run Keynesian model and try to raise short run output by reducing the savings ratio. With only temporary increases in output and a growing stock of public debt, there is a considerable risk that the debt-GDP ratio will increase and hence the anticipated future tax rate  $\tau'$ . Indeed in a two-period approach, it must hold that real government consumption as well as real interest rate payment on the stock of public debt ( $B$ ) and discounted future government expenditures  $G^{\#}$  be equal to current tax revenue and discounted future tax revenue:

$$(26) \quad G + rB + G^{\#}(1+r) = \tau Y + \tau' Y^{\#}(1+r).$$

In a more elaborate MFS model, taking into account that the current tax rate and the future tax rate will negatively affect present consumption and investment, one could endogenize  $\tau'$  while assuming, for example, that  $G = G^{\#}$ . Risk-averse taxpayers will calculate  $\tau'$  not simply from (26), rather with  $G = G^{\#}$  they will calculate it as:

$$(27) \quad \tau' = (1+r) \left\{ \tau Y - [G + rB + G^{\#}(1+r)] / Y^{\#} + \Omega^T \right\}.$$

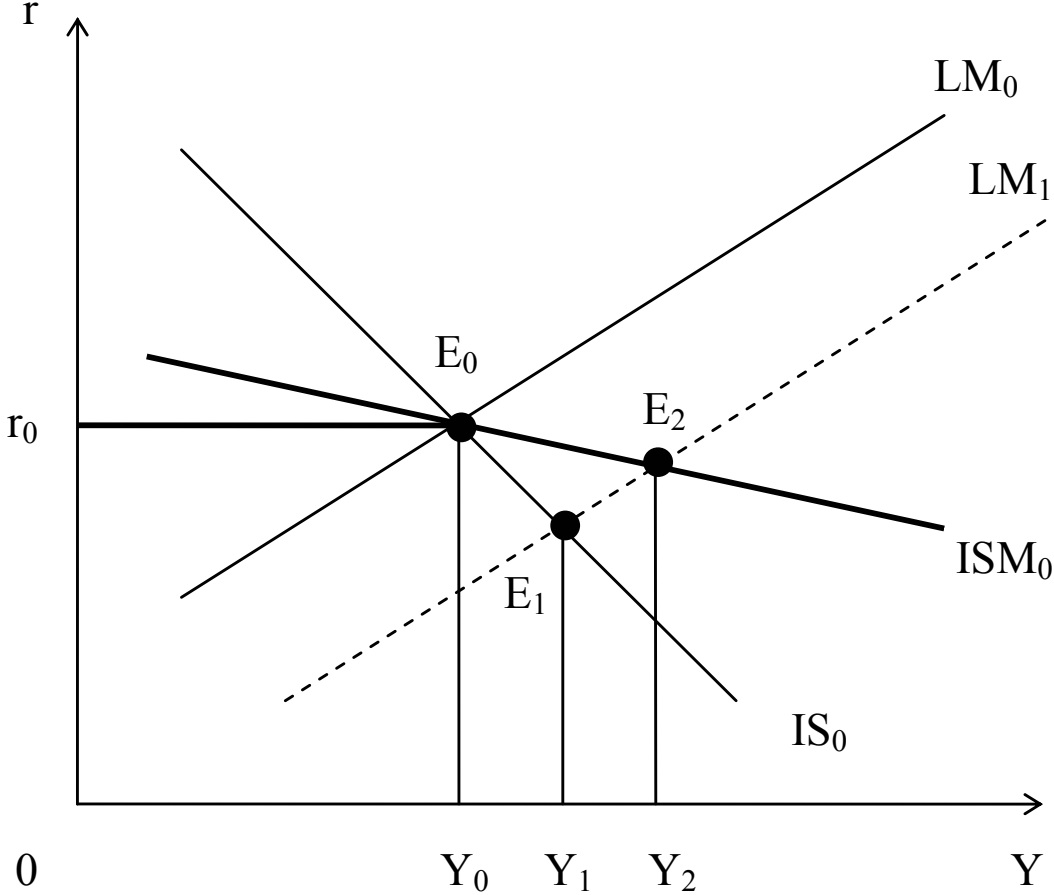
The variable  $\Omega^T$  indicates the credibility of government tax policies, or alternatively, its history in political cheating. If past governments have always kept their promises in the field of taxation and borrowing,  $\Omega^T$  is zero. The more often taxes or deficit-GDP ratios were raised in violation of election promises (or international treaties such as the Stability

and Growth Pact in the Euro zone) the higher  $\Omega^T$  will be. Thus,  $\Omega^T$  can be considered within a broader approach an endogenous variable which could be explained in the framework of a New Political Economy approach. At the bottom line, a loss in government reputation will therefore reduce present consumption and investment. Moreover, it might reduce net foreign direct investment inflows and hence net capital inflows.

The new approach presented can be extended in various ways (WELFENS, 2005) and allows to combine short run macroeconomic analysis with many of the standard results of modern growth theory – as e.g. summarized in JONES (1998). The model presented also raises many new issues for the debate about the efficiency of fiscal policy and monetary policy.

**Appendix: Comparing the Short Run Keynesian Model and the Medium Term Approach**

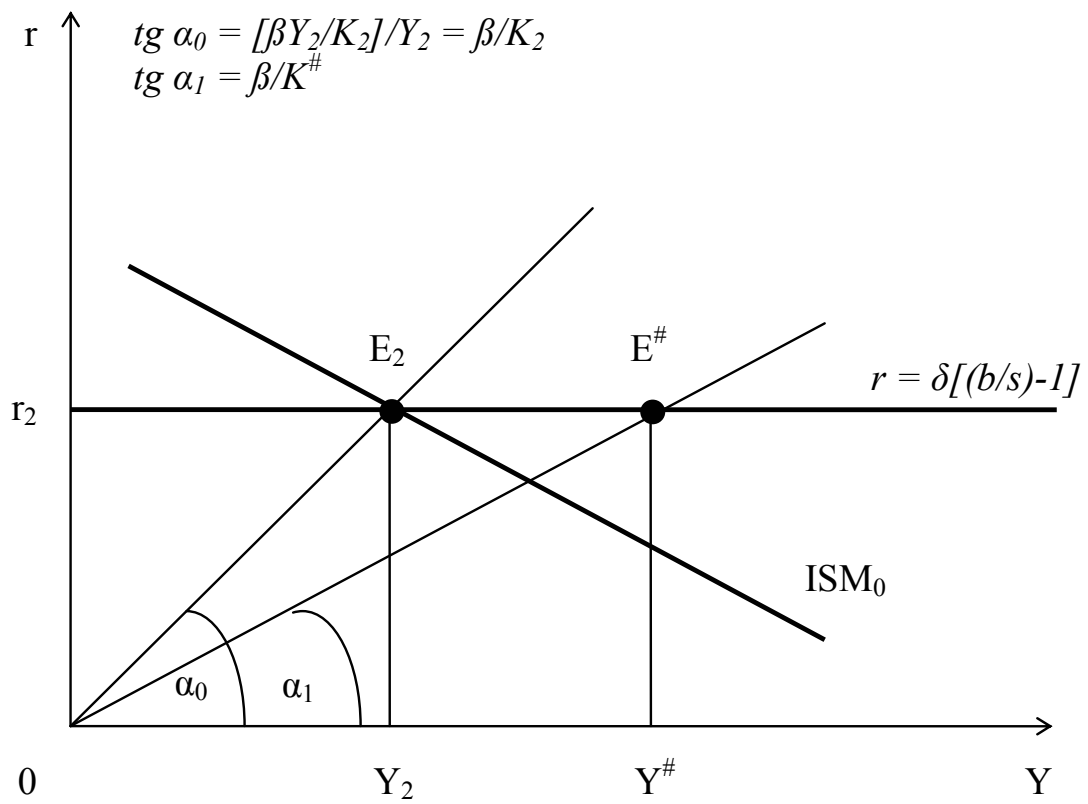
**Fig. 2: Standard IS-LM Model versus Keynes-Solow Model**





**Fig. 3: Medium Term and Long Run Equilibrium**

[As regards the money market: note that – with  $m =: M/P$  – in the long run the condition must hold:  $(m/L)^{\#} = hk^{\# \beta} - h' \beta k^{\# \beta - 1}$ ]



## References

- FROOT, K.A.; STEIN, J.C. (1991), Exchange Rates and Foreign Direct Investment: An Imperfect Capital Markets Approach, *Quarterly Journal of Economics*, November, 1191-1217.
- JONES, C.I. (1998), *Introduction to Economic Growth*, New York: Norton.
- SOLOW, R.M. (1956), A Contribution to the Theory of Economic Growth, *Quarterly Journal of Economics*, Vol. 70, 65-94.
- WELFENS, P.J.J. (2005), *Innovations in Macroeconomics*, Heidelberg and New York: Springer, forthcoming.

## EIIW Discussion Papers

### ISSN 1430-5445:

Standing orders (usually 13 issues or more p.a.): academic rate 95 Euro p.a.; normal rate 250 Euro p.a.

Single orders: academic rate 10 Euro per copy; normal rate 20 Euro per copy.

Die Zusammenfassungen der Beiträge finden Sie im Internet unter:

The abstracts of the publications can be found in the internet under:

<http://www.euroeiw.de>

- No. 1 **Welfens, P.J.J.:** Telecommunications in Systemic Transformation, January 1995.
- No. 2 **Welfens, P.J.J.; Graack, C.:** Telecommunications in Western Europe: Liberalization, Technological Dynamics and Regulatory Developments, January 1995.
- No. 3 **Welfens, P.J.J.:** Achieving Competition in Europe's Telecommunications Sector, February 1995.
- No. 4 **Addison, J.T.:** The Dunlop Report: European Links and Other Odd Connections, May 1995.
- No. 5 **Addison, J.T.; Blackburn, McKinley L.:** A Puzzling Aspect of the Effect of Advance Notice on Unemployment, May 1995.
- No. 6 **Welfens, P.J.J.; Graack, C.:** Deregulierungspolitik und Wettbewerb in Netzindustrien: Bedeutung und Optionen für osteuropäische Transformationsländer, May 1995.
- No. 7 **Addison, J.T. Chilton, J.B.:** Models of Union Behavior, June 1995.
- No. 8 **Graack, C.:** EU-Telecom Markets and International Network Alliances: Developments, Strategies and Policy Implications, August 1995.
- No. 9 **Welfens, P.J.J.:** Koordinationserfordernisse der EU-Infrastrukturpolitik, November 1995.
- No. 10 **Hillebrand, R.:** Umweltpolitik in föderalen Systemen - eine kritische Analyse der EU-Umweltpolitik, December 1995.
- No. 11 **Addison, J.T.; Schnabel, C.; Wagner J.:** On the Determinants of "Mandatory" Works Councils in Germany, December 1995.
- No. 12 **Welfens, P.J.J.:** Towards Full Employment and Growth in the European Union, December 1995.
- No. 13 **Welfens, P.J.J.:** Wirtschaftspolitische Kompetenzverteilung in der Europäischen Union, December 1995.
- No. 14 **Welfens, P.J.J.:** Privatization, Efficiency and Equity, January 1996.
- No. 15 **Hartwig, K.-H.; Welfens P.J.J.:** EU and Eastern Europe: Western European Integration and Eastern European Transformation, May 1996.
- No. 16 **Welfens, P.J.J.:** Konsequenzen einer Osterweiterung für die EU und deren Reformbedarf, May 1996.
- No. 17 **Graack, C.:** Structure of the Telecoms Sector and Degree of Internationalization in Europe and Russia, July 1996.

- No. 18 **Bogai, D.:** Werkstatt der Deutschen Einheit? Wirtschaft und Arbeitsmarkt in der Region Berlin-Brandenburg, October 1996.
- No. 19 **Graack, C.:** Internationale Aspekte der Telekommunikationswirtschaft: Liberalisierung, internationale Tarifmechanismen und Wohlfahrtseffekte, October 1996.
- No. 20 **Jungmittag, A.; Welfens P.J.J.:** Telekommunikation, Innovation und die langfristige Produktionsfunktion: Theoretische Aspekte und eine Kointegrationsanalyse für die Bundesrepublik Deutschland, October 1996.
- No. 21 **Welfens, P.J.J.; Guth M.:** EU-Strukturpolitik in Deutschland: Entwicklung, Effizienzüberlegungen und Reformoptionen, October 1996.
- No. 22 **Welfens, P.J.J.; Graack C.:** Telekommunikationsmärkte in Europa: Marktzutrittschancen und Privatisierungsprobleme aus Sicht der Neuen Politischen Ökonomie, October 1996.
- No. 23 **Welfens, P.J.J.:** Die Position Deutschlands im veränderten Europa: Wirtschaftliche und reformpolitische Perspektiven, November 1996.
- No. 24 **Hartmann, P.:** Foreign Exchange Vehicles Before and After EMU: From Dollar/Mark to Dollar/Euro?, November 1996.
- No. 25 **Jungmittag, A.; Welfens P.J.J.:** The Political Economy of EMU and Stabilization Policy, May 1997.
- No. 26 **Hölzler, H.:** Privatisierung und Einführung von Wettbewerb in Rußland, January 1996.
- No. 27 **Welfens, P.J.J.:** Small and Medium-sized Companies in Economic Growth: Theory and Policy Implications in Germany, May 1997.
- No. 28 **Bogai, D.:** Europäische Arbeitsmarktpolitik und nationale beschäftigungspolitische Initiativen, May 1997.
- No. 29 **Welfens, P.J.J.:** Research & Development Policy and Employment, June 1997.
- No. 30 **Sinclair, A.:** Liberalising the Electricity Supply Industry in Western and Eastern Europe: Lessons for Russia, July 1997.
- No. 31 **Graack, C.:** Infrastructure Investments and Regulation in Telecommunications, July 1997.
- No. 32 **Welfens, P.J.J.; Schwarz A.:** Die Rolle des Staates in der Sozialen Marktwirtschaft bei Globalisierung der Wirtschaftsbeziehungen, August 1997.
- No. 33 **Welfens, P.J.J.; Wiegert R.:** Transformation Policies, Regulation of Telecommunications and Foreign Direct Investment in Transforming Economies, July 1997.
- No. 34 **Welfens, P.J.J.:** Internationalization of Telecoms, Deregulation, Foreign Investment and Pricing: Analysis and Conclusions for Transforming Economies, July 1997.
- No. 35 **Schwarz, A.:** Subventionspolitik in den mittel- und osteuropäischen Transformationsländern: Gegenwärtige Strukturen, Probleme und Transparenzdefizite, September 1997.
- No. 36 **Welfens, P.J.J.; Hillebrand R.:** Globalisierung der Wirtschaft: Wirtschaftspolitische Konsequenzen des internationalen Standortwettbewerbs, September 1997.
- No. 37 **Stiller, H.:** Material Intensity of Transportation and Implications for Sustainable Mobility in Europe, September 1997.
- No. 38 **Gerstberger, T.; Graack C.:** Competition and Deregulation in the Japanese Telecommunications Network Industry, September 1997.

- No. 39 **Welfens, P.J.J.:** Wirtschaftspolitische Flankierungserfordernisse des Euro-Starts, November 1997.
- No. 40 **Aslund, A.:** The Political Economy of Systemic Transformation and Institution-Building, November 1997.
- No. 41 **Guth, M.:** Regionale Beschäftigungspakte im Rahmen der EU-Strukturpolitik: Hintergrund und Einordnung, November 1997.
- No. 42 **Jungmittag, A.; Welfens P.J.J.:** Politische Ökonomie der Europäischen Währungsunion und Stabilitätspolitik, January 1998.
- No. 43 **Welfens, P.J.J.:** Labor Costs, Unemployment and Innovation, February 1998.
- No. 44 **Addison, J.T.; Audretsch, D.B.; Gries, T.; Grupp H.; Welfens, P.J.J.:** Economic Globalization, Innovation and Growth, April 1998.
- No. 45 **Welfens, P.J.J.:** Euro, Währungsunion und EU-Binnenmarkt, April 1998.
- No. 46 **Addison, J.T., Schnabel, C.; Wagner J.:** Works Councils in Germany: Their Effects on Firm Performance, March 1998.
- No. 47 **Addison, J.T.; Portugal, P.:** Short- and Long-Term Unemployment, March 1998.
- No. 48 **Welfens, P.J.J.:** Trade and Optimum Import Tariffs: A Note in the Context of Foreign Direct Investment, June 1998.
- No. 49 **Bohn, F.:** Monetary Union and the Interest-Exchange Trade-off, July 1998.
- No. 50 **Welfens, P.J.J.:** Exchange Rate Policy for the Euro: Theory, Strategic Issues and Policy Options, July 1998.
- No. 51 **Addison, J.T.; Portugal P.:** Job Search Methods and Outcomes, July 1998.
- No. 52 **Jungmittag, A.; Welfens P.J.J.:** Telecommunication, Innovation and the Long-Term Production Function: Theoretical Analysis and a Cointegration Analysis for West Germany 1960-1990, August 1998.
- No. 53 **Welfens, P.J.J.:** Eastern EU Enlargement: Problems, Conflicts and Policy Options, September 1998.
- No. 54 **Welfens, P.J.J.:** Die russische Transformationskrise: Monetäre und reale Aspekte sowie Politikoptionen, November 1998.
- No. 55 **Graack, C.; Welfens, P.J.J.:** Internationaler Technologiewettbewerb, Arbeitsmarktdynamik und Unternehmensgründungsdynamik bei Standortkonkurrenz, September 1998.
- No. 56 **Welfens, P.J.J.:** Liberalisierung der Energiewirtschaft in Deutschland und EU-Partnerländern, Januar 1999
- No. 57 **Welfens, P.J.J.:** The Russian Transformation Crisis: Origins, Analysis and New Policy Requirements, January 1999
- No. 58 **Komulainen, Tuomas:** Currency Crisis Theories – Some Explanations for the Russian Case, May 1999
- No. 59 **Welfens, P.J.J.:** Internet Market Dynamics in Germany: From a small Market towards a Strategic Sector of the Economy, May 1999
- No. 60 **Wiegert, R.:** Der russische Bankensektor im Prozeß der Systemtransformation, Juni 1999
- No. 61 **Vogelsang, M.:** How to rescue Japan: Proposal of a staggered VAT reform. Draft, May 1999
- No. 62 **Welfens, P.J.J.:** The Start of the Euro, International Relations and Inflation, April 1999

- No. 63 **Sutela, P.:** Overcoming the Russian Transformation Crisis: Selected Issues and Policy Options, June 1999
- No. 64 **Bohn, F.:** The Italian Case: A Parable for the Eastern Enlargement of the EMU, July 1999
- No. 65 **Meyer, B.; Welfens, P.J.J.:** Innovation – Augmented Ecological Tax Reform: Theory, Model Simulation and New Policy Implications, September 1999
- No. 66 **Gavrilenkov, E.:** Crisis in Russia: Selected Problems of the Macroeconomic Performance, September 1999
- No. 67 **Steinsdorff, S. v.:** Wie demokratisch ist Rußland? Dezember 1999
- No. 68 **Pelzel, R.:** Internationalisierung der Telekommunikation, eine Vergleichsanalyse für USA, Großbritannien und Deutschland, Dezember 1999
- No. 69 **Serebryakov, G.:** Structural Change and Econometric Prospective, January 2000
- No. 70 **Bohn, F.:** Political Instability, Inflation, and International Loans, February 2000
- No. 71 **Welfens, P.J.J.:** The EU and Russia: Strategic Aspects of Transformation and Integration, April 2000
- No. 72 **Jungmittag, A.:** Techno-Globalismus: Mythos oder Realität?, Juli 2000
- No. 73 **von Westernhagen, N.:** The Role of FDI in the Transition Process of Selected CIS and Eastern European Countries, September 2000
- No. 74 **Welfens, P.J.J.; Hollants, J.; Kauffmann, A.:** Mittelständische Unternehmen und das Internet: Perspektiven in Deutschland, Oktober 2000
- No. 75 **Jungmittag, A.; Welfens, P.J.J.:** Auswirkungen einer Internet Flatrate auf Wachstum und Beschäftigung in Deutschland, März 2000
- No. 76 **Addison, J.T.:** Is Community Social Policy Beneficial, Irrelevant, or Harmful to the Labor Market Performance of the European Union?, September 2000
- No. 77 **Welfens, P.J.J.:** Modern Exchange Rate Theory and Schumpetrian Economic Analysis: New Approach and Application to the Euro, June 2000
- No. 78 **Guth, M.:** From technology policy for regions to regional technology policy towards a new policy strategy in the EU, December 2000
- No. 79 **Welfens, P.J.J.; Kauffmann, A.; Vogelsang, M.:** Evaluationsbericht: Das Internet strategisch richtig nutzen, Februar 2001
- No. 80 **Welfens, P.J.J.:** Transatlantische Wachstumsunterschiede, Euro-Schwäche und Finanzpolitik, Mai 2001
- No. 81 **Jungmittag, A.; Welfens, P.J.J.:** Effects of an Internet Flat Rate on Growth and Employment in Germany, February 2001
- No. 82 **Welfens, P.J.J.:** Transatlantic Growth Differentials, ICT Dynamics, Fiscal Policy and the Fall of the Euro, July 2001
- No. 83 **Wiegert, R.:** Financial Sector and Human Capital in a Long-Term Growth Perspective: The Case of Russia, July 2001
- No. 84 **Addison J.T.:** Principles of Market-Oriented Labor Market Policies; July 2001
- No. 85 **Jungmittag, A.; Welfens, P.J.J.:** Europäische Telekomliberalisierung und Außenhandel: Theorie, Gravitationsansatz und Implikationen, Juni 2001
- No. 86 **Ponder, J.K.:** Telekommunikationssektor in Polen: Entwicklungen, Investitionsperspektiven und Regulierung, Oktober 2001

- No. 87 **Jungmittag, A.; Welfens P.J.J.:** Liberalization of EU Telecommunications and Trade: Theory, Gravity Equation Analysis and Policy Implications, October 2001
- No. 88 **Bohn, F.:** Powerful Groups and Corruption, December 2000
- No. 89 **Welfens, P.J.J.:** Aggregation in a Two-Sector Growth Model: A Modified Solow Approach with Cobb-Douglas Production Functions, September 2001
- No. 90 **Welfens, P.J.J.:** Stabilization and Growth: A New Model, October 2001
- No. 91 **Addison, J.T.:** Principles of Market-Oriented Labor Market Policies, March 2002
- No. 92 **Jungmittag, A.:** Innovationsdynamik in der EU: Konvergenz oder Divergenz?, Eine Zeitreihen-Querschnittsanalyse, Februar 2002
- No. 93 **Welfens, P.J.J.; Wiegert, R.:** Reform des Bankensektors und Stabilität in Rußland, November 2001
- No. 94 **Welfens, P.J.J.:** Mittelfristige Herausforderungen für Euroland: Stabilität, EU-Osterweiterung, Wachstum; November 2001
- No. 95 **Welfens, P.J.J.:** Constitutional Issues and the Quality of Political Competition: Analysis and Implications for a Future EU Constitution, April 2002
- No. 96 **Jungmittag, A.:** Innovation Dynamics in the EU: Convergence or Divergence?, A Cross-Country Panel Data Analysis, June 2002
- No. 97 **Welfens, P.J.J.:** I&K-Technologie, Produktivität und Wachstum: Transatlantische Analyseperspektiven und wirtschaftspolitische Optionen, Juli 2002
- No. 98 **Jungmittag, A.; Welfens, P.J.J.:** Telecommunication, Internet, Innovation and Growth in Europe and the US, August 2002
- No. 99 **Welfens, P.J.J.:** Finanzpolitik zwischen Wachstumsschwäche und Maastrichter Vertrag / Stabilitätspakt: Ausgabenschwerpunkte neu setzen und kluge Steuerreform, September 2002
- No. 100 **Gavrilencov, E.:** Macroeconomic Situation in Russia - Growth, Investment and Capital Flows, October 2002
- No. 101 **Agata, K.:** Internet, Economic Growth and Globalization, November 2002
- No. 102 **Blind, K.; Jungmittag, A.:** Ausländische Direktinvestitionen, Importe und Innovationen im Dienstleistungsgewerbe, February 2003
- No. 103 **Welfens, P.J.J.; Kirn, T.:** Mittelstandsentwicklung, BASEL-II-Kreditmarktprobleme und Kapitalmarktperspektiven, Juli 2003
- No. 104 **Standke, K.-H.:** The Impact of International Organisations on National Science and Technology Policy and on Good Governance, March 2003
- No. 105 **Welfens, P.J.J.:** Exchange Rate Dynamics and Structural Adjustment in Europe, May 2003
- No. 106 **Welfens, P.J.J.; Jungmittag, A.; Kauffmann, A.; Schumann, Ch.:** EU Eastern Enlargement and Structural Change: Specialization Patterns in Accession Countries and Economic Dynamics in the Single Market, May 2003
- No. 107 **Welfens, P.J.J.:** Überwindung der Wirtschaftskrise in der Eurozone: Stabilitäts-, Wachstums- und Strukturpolitik, September 2003
- No. 108 **Welfens, P.J.J.:** Risk Pricing, Investment and Prudential Supervision: A Critical Evaluation of Basel II Rules, September 2003
- No. 109 **Welfens, P.J.J.; Ponder, J.K.:** Digital EU Eastern Enlargement, October 2003

- No. 110 **Addison, J.T.; Teixeira, P.:** What Have We Learned About The Employment Effects of Severance Pay? Further Iterations of Lazear et al., October 2003
- No. 111 **Gavrilencov, E.:** Diversification of the Russian Economy and Growth, October 2003
- No. 112 **Wiegert, R.:** Russia's Banking System, the Central Bank and the Exchange Rate Regime, November 2003
- No. 113 **Shi, S.:** China's Accession to WTO and its Impacts on Foreign Direct Investment, November 2003
- No. 114 **Welfens, P.J.J.:** The End of the Stability Pact: Arguments for a New Treaty, December 2003
- No. 115 **Addison, J.T.; Teixeira, P.:** The effect of worker representation on employment behaviour in Germany: another case of -2.5%, January 2004
- No. 116 **Borbély, D.:** EU Export Specialization Patterns in Selected Accession Countries, March 2004
- No. 117 **Welfens, P.J.J.:** Auf dem Weg in eine europäische Informations- und Wissensgesellschaft: Probleme, Weichenstellungen, Politikoptionen, Januar 2004
- No. 118 **Markova, E.:** Liberalisation of Telecommunications in Russia, December 2003
- No. 119 **Welfens, P.J.J.; Markova, E.:** Private and Public Financing of Infrastructure: Theory, International Experience and Policy Implications for Russia, February 2004
- No. 120 **Welfens, P.J.J.:** EU Innovation Policy: Analysis and Critique, March 2004
- No. 121 **Jungmittag, A.; Welfens, P.J.J.:** Politikberatung und empirische Wirtschaftsforschung: Entwicklungen, Probleme, Optionen für mehr Rationalität in der Wirtschaftspolitik, März 2004
- No. 122 **Borbély, D.:** Competition among Cohesion and Accession Countries: Comparative Analysis of Specialization Within the EU Market, June 2004
- No. 123 **Welfens, P.J.J.:** Digitale Soziale Marktwirtschaft: Probleme und Reformoptionen im Kontext der Expansion der Informations- und Kommunikationstechnologie, Mai 2004
- No. 124 **Welfens, P.J.J.; Kauffmann, A.; Keim, M.:** Liberalization of Electricity Markets in Selected European Countries, July 2004
- No. 125 **Bartelmus, P.:** SEEA Revision: Accounting for Sustainability?, August 2004
- No. 126 **Welfens, P.J.J.; Borbély, D.:** Exchange Rate Developments and Stock Market Dynamics in Transition Countries: Theory and Empirical Analysis, November 2004
- No. 127 **Welfens, P.J.J.:** Innovations in the Digital Economy: Promotion of R&D and Growth in Open Economies, January 2005
- No. 128 **Welfens, P.J.J.:** Savings, Investment and Growth: New Approaches for Macroeconomic Modelling, February 2005

## **EIIW Economic Policy Analysis**

- No. 1 **Welfens, P.J.J.:** Globalisierung der Wirtschaft und Krise des Sozialstaats: Ist die Wirtschaftswissenschaft am Ende?, April 1997
- No. 2 **Welfens, P.J.J.:** Nach der D-Mark kommt die E-Mark: Auf dem Weg zur EU-Währungsunion, Juli 1997



No. 3 **Welfens, P.J.J.:** Beschäftigungsförderliche Steuerreform in Deutschland zum Euro-Start:  
Für eine wachstumsorientierte Doppelsteuerreform, Oktober 1998

Fordern Sie den EIIW Newsletter an: [www.euroeiiw.de](http://www.euroeiiw.de)

Please subscribe to EIIW Newsletter: [www.euroeiiw.de](http://www.euroeiiw.de)

### **Weitere Beiträge von Interesse: Titels of related interest:**

WELFENS, P.J.J., WZIATEK-KUBIAK, (eds., 2005): Structural Change and Exchange Rate Dynamics – The Economics of EU Eastern Enlargement; Heidelberg: Springer.

WELFENS, P.J.J., ZOCHER, P., JUNGMITTAG, A. (et al. 2005): Internetwirtschaft 2010 (final Report for the German Federal Government; joint study EIIW and Fraunhofer Institute for System Dynamics and Innovation, Karlsruhe), Heidelberg: Physica.

GRAHAM, E., ODING, N., WELFENS, P.J.J., (2005): Internationalization and Economic Policy Reforms in Transition Countries, Heidelberg: Springer.

GAVRILENKOW, E., WELFENS, P.J.J., (2005): Инфраструктура, Инвестиции и Экономическая Интеграция: Перспективы Восточной Европы и России (Infrastructure, Investments and Economic Integration: Perspectives for Eastern Europe and Russia), Moscow: HSE.

APOLTE, T.; CASPERS, R.; WELFENS, P.J.J. (2004), Ordnungsökonomische Grundlagen nationaler und internationaler Wirtschaftspolitik, Stuttgart: Lucius & Lucius.

GAVRILENKOV, E.; WELFENS, P.J.J.; WIEGERT, R. (2004), Economic Opening Up and Growth in Russia, Heidelberg and New York: Springer.

MC MORROW, K.; RÖGER, W. (2003), The Economic and Financial Market Consequences of Global Aging, Heidelberg and New York: Springer.

WIEGERT, R. (2003), Transformation, Wachstum und Wettbewerb in Rußland, Heidelberg und New York: Springer.

PETZOLD, L. (2003), Infrastrukturreform in Transformationsländern, Lohmar: EUL-Verlag.

LANE, T., ODING, N., WELFENS, P.J.J. (2003), Real and Financial Economic Dynamics in Russia and Eastern Europe, Heidelberg and New York: Springer.

BARFIELD, C.E., HEIDUK, G., WELFENS, P.J.J. (2003), Internet, Economic Growth and Globalization, Perspectives on the New Economy in Europe, Japan and the USA, Heidelberg and New York: Springer.

GRIES, T., JUNGMITTAG, A., WELFENS, P.J.J. (2003), Neue Wachstums- und Innovationspolitik in Deutschland und Europa, Heidelberg und New York: Springer.

D. CASSEL; P.J.J. WELFENS (Hrsg., 2003), Regionale Integration und Ostererweiterung der Europäischen Union, Stuttgart: Lucius & Lucius.

ADDISON, J.T., WELFENS, P.J.J. (2003), Labor Markets and Social Security, Heidelberg and New York: Springer.

- WELFENS, P.J.J., WIEGERT, R. (2002), Transformationskrise und neue Wirtschaftsreformen in Russland, Heidelberg und New York: Springer.
- WESTERNHAGEN, N. VON (2002), Systemic Transformation, Trade and Economic Growth, Heidelberg und New York: Springer.
- AUDRETSCH, D.B., WELFENS, P.J.J. (2002), The New Economy and Economic Growth in Europe and the US, Heidelberg und New York: Springer.
- WELFENS, P.J.J. (2002), Interneteconomics.net, Heidelberg und New York: Springer.
- BUNTE, H.-J., WELFENS, P.J.J. (2002), Wettbewerbsdynamik und Marktabgrenzungen auf Telekommunikationsmärkten, Heidelberg und New York: Springer.
- JUNGMITTAG, A., WELFENS, P.J.J. (2002) Internet, Telekomliberalisierung und Wirtschaftswachstum, Heidelberg und New York: Springer.
- SCHWARZ, A. (2001), Subventionen in Mittel- und Osteuropa, Lohmar: EUL-Verlag.
- PELZEL, R.F. (2001), Deregulierte Telekommunikationsmärkte, Heidelberg und New York: Springer.
- WELFENS, P.J.J. (2001), Stabilizing and Integrating the Balkans, Heidelberg und New York: Springer.
- WELFENS, P.J.J. (2001), Internationalization of the Economy and Environmental Policy Options, Heidelberg und New York: Springer.
- WELFENS, P.J.J. (2001), European Monetary Union and Exchange Rate Dynamics, Heidelberg und New York: Springer.
- GAVRILENKOV, E., WELFENS, P.J.J. (2000), Restructuring , Stabilizing and Modernizing the New Russia, Heidelberg und New York: Springer.
- TILLY, R., WELFENS, P.J.J. (2000), Economic Globalization, International Organizations and Crisis Management, Heidelberg und New York: Springer.
- JUNGMITTAG, A., REGER, G., REISS, T. (Eds., 2000), Changing Innovation in the Pharmaceutical Industry. Globalization and New Ways of Drug Development, Heidelberg und New York: Springer.
- GRAACK, C., WELFENS, P.J.J. (1999), Technologieorientierte Unternehmensgründungen und Mittelstandspolitik in Europa, Heidelberg und New York: Springer.
- GRAACK, C., GRINBERG, R., WELFENS, P.J.J., YARROW, G. (Eds., 1999), Towards Competition in Network Industries – Telecommunications, Energy and Transportation in Europe and Russia, Heidelberg und New York: Springer.
- ADDISON, J.T., AUDRETSCH, D.B., GRIES, T., GRUPP, H., WELFENS, P.J.J. (1999), Globalization, Economic Growth and Innovation Dynamics, Heidelberg und New York: Springer.
- WELFENS, P.J.J. (1999), EU Eastern Enlargement and the Russian Transformation Crisis, Heidelberg und New York: Springer.
- WELFENS, P.J.J. (1999), Globalization of the Economy, Unemployment and Innovation, Heidelberg und New York: Springer.
- TILLY, R., WELFENS, P.J.J. (1999), Economic Globalization, International Organizations and Crisis Management, Heidelberg und New York: Springer.
- WELFENS, P.J.J. et al. (eds., 1998), Competition in Network Industries: Telecommunications, Energy and Transportation in Europe and Russia, Heidelberg und New York: Springer.
- PALKINAS, P.; EICHHORN, B., WELFENS, P.J.J. (eds., 1998), Europäische Währungsunion: Argumente und Fakten zur Euro-Debatte, Frankfurt/Main.

- GLOEDE, K., STROHE, H.B. WAGNER, D., WELFENS, P.J.J. (eds., 1998), Systemtransformation in Deutschland und Rußland: Erfahrungen, ökonomische Perspektiven und politische Optionen, Heidelberg und New York: Springer.
- AUDETSCH, D.B., ADDISON, J.T. GRUPP, H., WELFENS, P.J.J. (1998), Technological Competition, Employment and Innovation Policy in OECD Countries, Heidelberg and New York: Springer.
- ADDISON, J.T., WELFENS, P.J.J. (eds., 1998), European Labor Markets and Social Security, Heidelberg and New York: Springer.
- GRAACK, C. (1997), Telekommunikationswirtschaft in der Europäischen Union: Innovationsdynamik, Regulierungspolitik und Internationalisierungsprozesse, Heidelberg: Physica (award-winning book).
- WELFENS, P.J.J., WOLF, H. (ed., 1997), Banking, International Capital Flows and Growth in Europe, Heidelberg and New York: Springer.
- BÖRSCH-SUPAN, A., VON HAGEN, J., WELFENS, P.J.J. (eds., 1996,1997), Springers Handbuch der Volkswirtschaftslehre, Band 1 und 2, Heidelberg und New York: Springer.
- WELFENS, P.J.J., YARROW, G. (eds., 1996), Telecommunications and Energy in Systemic Transformation, Heidelberg and New York: Springer.
- GRAACK, C., WELFENS, P.J.J. (1996), Telekommunikationswirtschaft: Deregulierung, Privatisierung und Internationalisierung, Heidelberg und New York: Springer: (award-winning book).
- WELFENS, P.J.J. (ed., 1996), European Monetary Integration, 3<sup>rd</sup> edition, Heidelberg and New York: Springer.
- WELFENS, P.J.J. (ed., 1996), Economic Aspects of German Unification, 2. rev. and enlarged edition, Heidelberg and New York: Springer.
- TILLY, R., WELFENS, P.J.J. (eds., 1995), European Economic Integration as a Challenge to Industry and Government, Heidelberg and New York: Springer.
- WELFENS, P.J.J. (1995), Grundlagen der Wirtschaftspolitik, Heidelberg und New York: Springer.
- JASINSKI, P., WELFENS, P.J.J. (1994), Privatization and Foreign Direct Investment in Transforming Economies, Aldershot: Dartmouth/Gower.
- WELFENS, P.J.J. (1992), Market-oriented Systemic Transformation in Eastern Europe. Problems, Theoretical Issues and Policy Options, Heidelberg and New York: Springer.
- KLEIN, M., WELFENS, P.J.J. (eds., 1992), Multinationals in the New Europe and Global Trade, Heidelberg and New York: Springer.
- WELFENS, P.J.J. (1990), Internationalisierung von Wirtschaft und Wirtschaftspolitik, Heidelberg und New York: Springer.
- BALCEROWICZ, L., WELFENS, P.J.J. (1988), Innovationsdynamik im Systemvergleich. Theorie und Praxis unternehmerischer, gesamtwirtschaftlicher und politischer Neuerung, Heidelberg: Physica.